

Product datasheet for **TA323338**

smooth muscle Myosin heavy chain 11 (MYH11) Rabbit Polyclonal Antibody

Product data:

Product Type:	Primary Antibodies
Applications:	IHC
Recommended Dilution:	IHC: 25-100 Positive control: Human cervical cancer Predicted cell location: Cytoplasm, Nucleus
Reactivity:	Human, Mouse, Rat
Host:	Rabbit
Isotype:	IgG
Clonality:	Polyclonal
Immunogen:	Synthetic peptide corresponding to a region derived from 1958-1972 amino acids of Human myosin, heavy chain 11, smooth muscle
Formulation:	PBS pH7.3, 0.05% NaN ₃ , 50% glycerol
Concentration:	lot specific
Purification:	Antigen affinity purification
Conjugation:	Unconjugated
Storage:	Store at -20°C as received.
Stability:	Stable for 12 months from date of receipt.
Gene Name:	myosin, heavy chain 11, smooth muscle
Database Link:	NP_074035 Entrez Gene 17880 Mouse Entrez Gene 24582 Rat Entrez Gene 4629 Human P35749



[View online »](#)

Background:

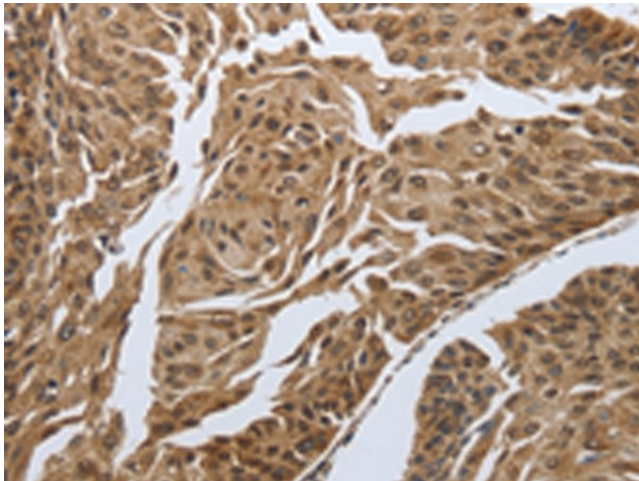
The protein encoded by this gene is a smooth muscle myosin belonging to the myosin heavy chain family. The gene product is a subunit of a hexameric protein that consists of two heavy chain subunits and two pairs of non-identical light chain subunits. It functions as a major contractile protein; converting chemical energy into mechanical energy through the hydrolysis of ATP. The gene encoding a human ortholog of rat NUDE1 is transcribed from the reverse strand of this gene; and its 3' end overlaps with that of the latter. The pericentric inversion of chromosome 16 [inv(16)(p13q22)] produces a chimeric transcript that encodes a protein consisting of the first 165 residues from the N terminus of core-binding factor beta in a fusion with the C-terminal portion of the smooth muscle myosin heavy chain. This chromosomal rearrangement is associated with acute myeloid leukemia of the M4Eo subtype. Alternative splicing generates isoforms that are differentially expressed; with ratios changing during muscle cell maturation. Alternatively spliced transcript variants encoding different isoforms have been identified.

Synonyms:

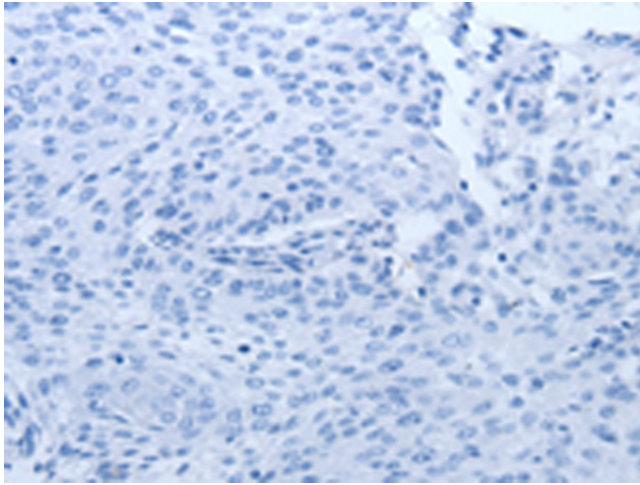
AAT4; FAA4; SMHC; SMMHC

Protein Pathways:

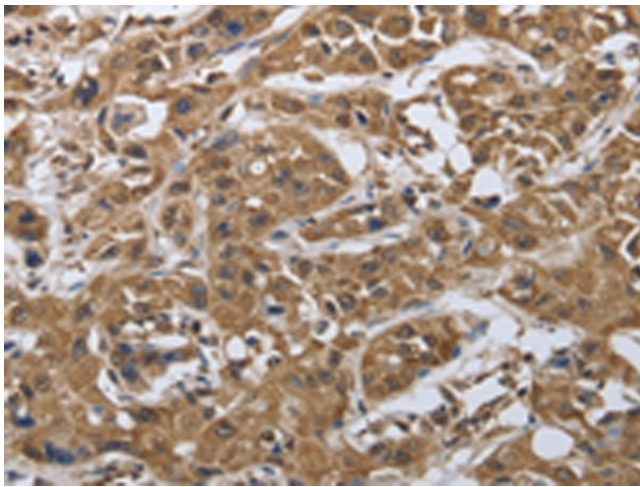
Tight junction, Vascular smooth muscle contraction, Viral myocarditis

Product images:

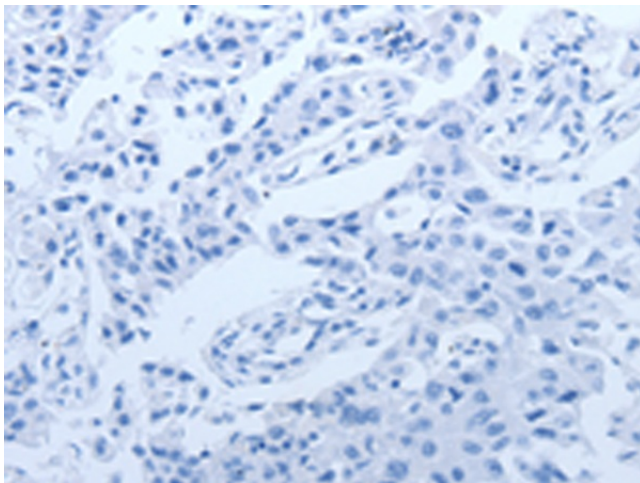
Immunohistochemistry of paraffin-embedded Human cervical cancer tissue using TA323338 (MYH11 Antibody) at dilution 1/20 (Original magnification: $\times 200$)



Immunohistochemistry of paraffin-embedded Human cervical cancer tissue using TA323338 (MYH11 Antibody) at dilution 1/20, treated with synthetic peptide. (Original magnification: ×200)



Immunohistochemistry of paraffin-embedded Human lung cancer tissue using TA323338 (MYH11 Antibody) at dilution 1/20 (Original magnification: ×200)



Immunohistochemistry of paraffin-embedded Human lung cancer tissue using TA323338 (MYH11 Antibody) at dilution 1/20, treated with synthetic peptide. (Original magnification: ×200)