

## Product datasheet for **TA323337**

### Annexin VIII (ANXA8) Rabbit Polyclonal Antibody

#### Product data:

Product Type:	Primary Antibodies
Applications:	IHC, WB
Recommended Dilution:	WB: 200-1000 WB positive control: A549 cells IHC: 50-100 Positive control: Human esophagus cancer Predicted cell location: Cytoplasm
Reactivity:	Human, Mouse, Rat
Host:	Rabbit
Isotype:	IgG
Clonality:	Polyclonal
Immunogen:	Fusion protein corresponding to a region derived from 130-200 amino acids of human annexin A8
Formulation:	PBS pH7.3, 0.05% NaN <sub>3</sub> , 50% glycerol
Concentration:	lot specific
Purification:	Antigen affinity purification
Conjugation:	Unconjugated
Storage:	Store at -20°C as received.
Stability:	Stable for 12 months from date of receipt.
Predicted Protein Size:	37 kDa
Gene Name:	annexin A8
Database Link:	<a href="#">NP_001035173</a> <a href="#">Entrez Gene 11752 Mouse</a> <a href="#">Entrez Gene 306283 Rat</a> <a href="#">Entrez Gene 653145 Human</a> <a href="#">P13928</a>



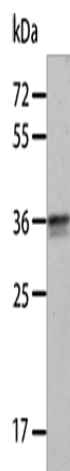
[View online »](#)

**Background:**

This gene encodes a member of the annexin family of evolutionarily conserved Ca<sup>2+</sup> and phospholipid binding proteins. The encoded protein may function as an anticoagulant that indirectly inhibits the thromboplastin-specific complex. Overexpression of this gene has been associated with acute myelocytic leukemia. A highly similar duplicated copy of this gene is found in close proximity on the long arm of chromosome 10.

**Synonyms:**

ANX8; CH17-360D5.2

**Product images:**

Gel: 10%SDS-PAGE

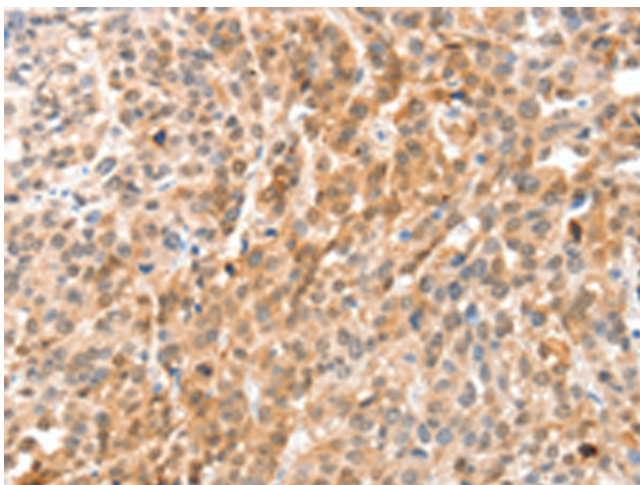
Lysate: 40 µg

Lane: A549 cells

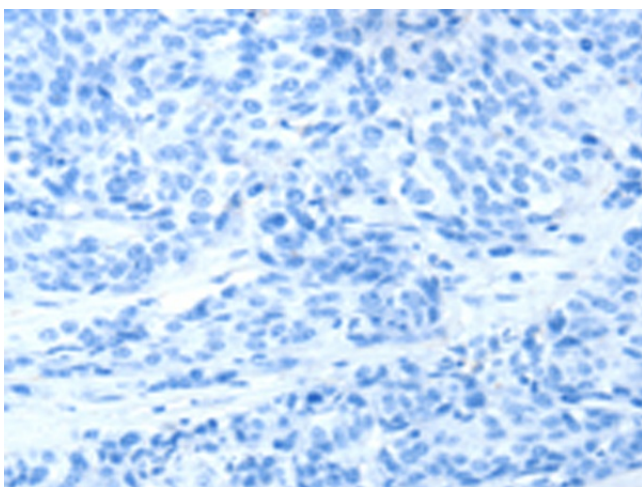
Primary antibody: TA323337 (ANXA8 Antibody) at dilution 1/300

Secondary antibody: Goat anti rabbit IgG at 1/8000 dilution

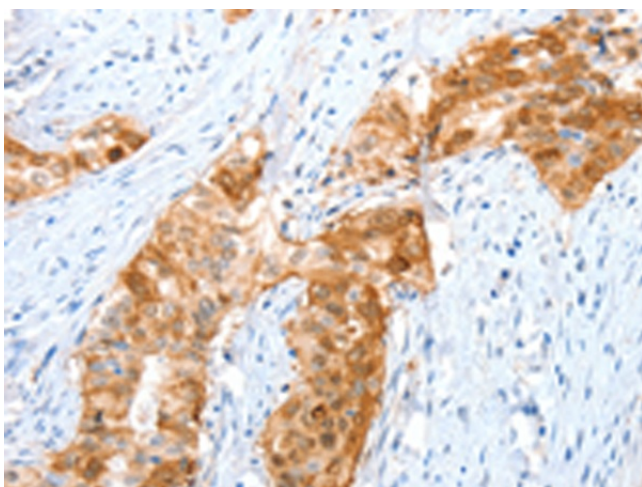
Exposure time: 2 minutes



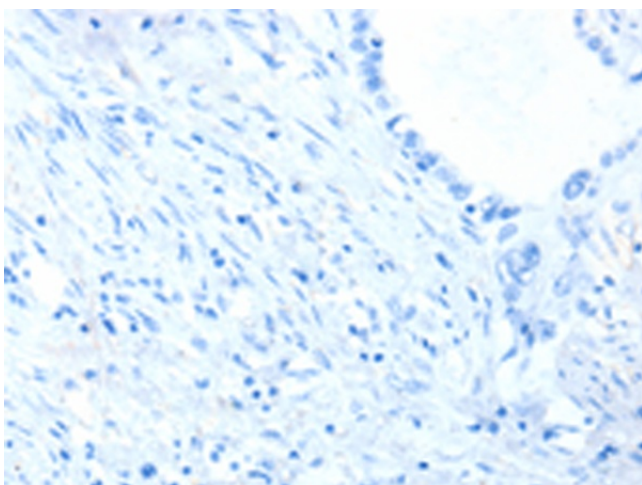
Immunohistochemistry of paraffin-embedded Human esophagus cancer tissue using TA323337 (ANXA8 Antibody) at dilution 1/35 (Original magnification: ×200)



Immunohistochemistry of paraffin-embedded Human esophagus cancer tissue using TA323337 (ANXA8 Antibody) at dilution 1/35, treated with fusion protein. (Original magnification:  $\times 200$ )



Immunohistochemistry of paraffin-embedded Human cervical cancer tissue using TA323337 (ANXA8 Antibody) at dilution 1/35 (Original magnification:  $\times 200$ )



Immunohistochemistry of paraffin-embedded Human cervical cancer tissue using TA323337 (ANXA8 Antibody) at dilution 1/35, treated with fusion protein. (Original magnification:  $\times 200$ )