

Product datasheet for **TA323335**

AATK Rabbit Polyclonal Antibody

Product data:

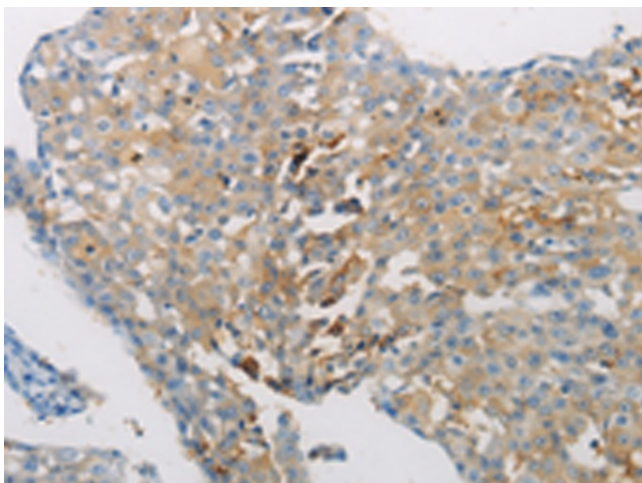
Product Type:	Primary Antibodies
Applications:	IHC
Recommended Dilution:	IHC: 15-50 Positive control: Human breast cancer Predicted cell location: Cytoplasm
Reactivity:	Human
Host:	Rabbit
Isotype:	IgG
Clonality:	Polyclonal
Immunogen:	Synthetic peptide corresponding to a region derived from 1360-1374 amino acids of Human apoptosis-associated tyrosine kinase
Formulation:	PBS pH7.3, 0.05% NaN ₃ , 50% glycerol
Concentration:	lot specific
Purification:	Antigen affinity purification
Conjugation:	Unconjugated
Storage:	Store at -20°C as received.
Stability:	Stable for 12 months from date of receipt.
Gene Name:	apoptosis-associated tyrosine kinase
Database Link:	NP_004911 Entrez Gene 9625 Human Q6ZMQ8
Background:	The protein encoded by this gene contains a tyrosine kinase domain at the N-terminus and a proline-rich domain at the C-terminus. This gene is induced during apoptosis; and expression of this gene may be a necessary pre-requisite for the induction of growth arrest and/or apoptosis of myeloid precursor cells. This gene has been shown to produce neuronal differentiation in a neuroblastoma cell line. Two transcript variants encoding different isoforms have been found for this gene.
Synonyms:	AATYK; AATYK1; LMR1; LMTK1; p35BP; PPP1R77



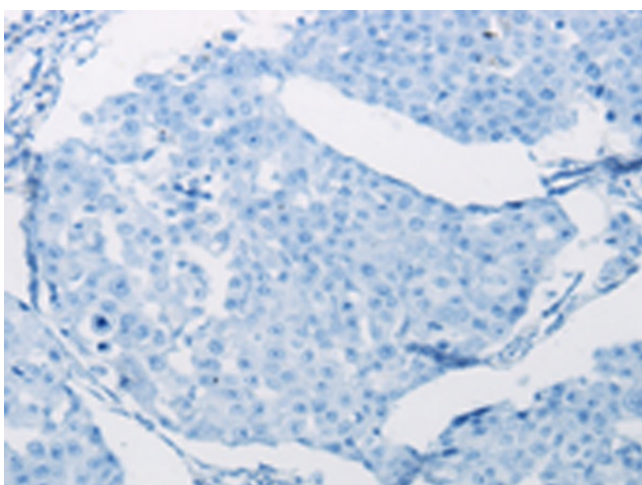
[View online »](#)

Protein Families: Druggable Genome, Protein Kinase

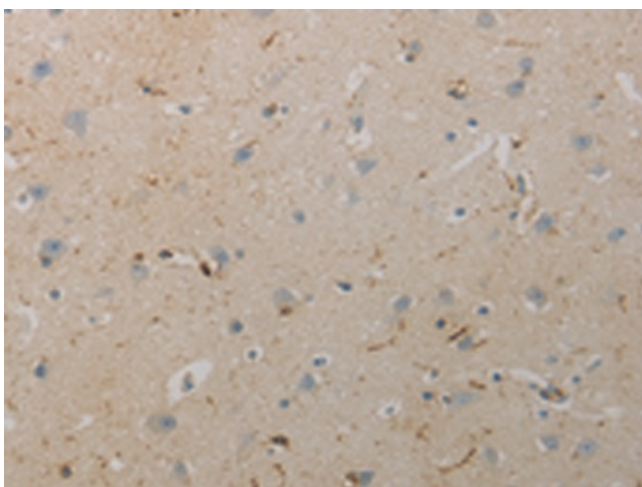
Product images:



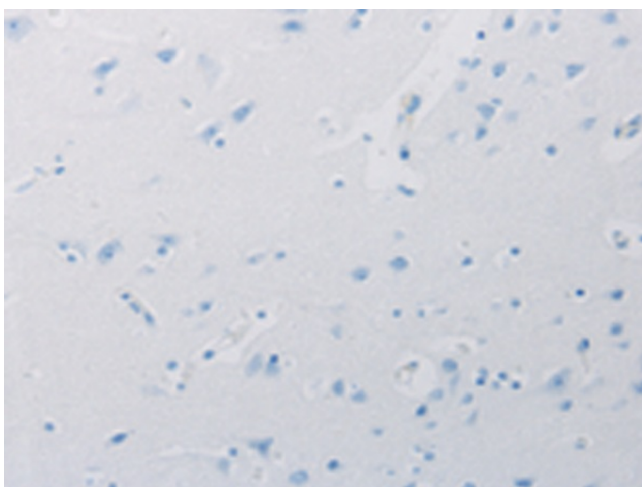
Immunohistochemistry of paraffin-embedded Human breast cancer tissue using TA323335 (AATK Antibody) at dilution 1/10 (Original magnification: ×200)



Immunohistochemistry of paraffin-embedded Human breast cancer tissue using TA323335 (AATK Antibody) at dilution 1/10, treated with synthetic peptide. (Original magnification: ×200)



Immunohistochemistry of paraffin-embedded Human brain tissue using TA323335 (AATK Antibody) at dilution 1/10 (Original magnification: ×200)



Immunohistochemistry of paraffin-embedded Human brain tissue using TA323335 (AATK Antibody) at dilution 1/10, treated with synthetic peptide. (Original magnification: ×200)