

## Product datasheet for **TA323332**

### ALDH5A1 Rabbit Polyclonal Antibody

#### Product data:

|                       |   |
|-----------------------|---|
| Product Type:         | Primary Antibodies  |
| Applications:         | IHC   |
| Recommended Dilution: | IHC: 50-200<br>Positive control: Human thyroid cancer<br>Predicted cell location: Cytoplasm   |
| Reactivity:           | Human, Mouse, Rat   |
| Host:                 | Rabbit  |
| Isotype:              | IgG   |
| Clonality:            | Polyclonal  |
| Immunogen:            | Synthetic peptide corresponding to a region derived from 514-529 amino acids of human aldehyde dehydrogenase 5 family, member A1  |
| Formulation:          | PBS pH7.3, 0.05% NaN <sub>3</sub> , 50% glycerol  |
| Concentration:        | lot specific  |
| Purification:         | Antigen affinity purification   |
| Conjugation:          | Unconjugated  |
| Storage:              | Store at -20°C as received.   |
| Stability:            | Stable for 12 months from date of receipt.  |
| Gene Name:            | aldehyde dehydrogenase 5 family member A1   |
| Database Link:        | <a href="#">NP_001071</a><br><a href="#">Entrez Gene 214579 MouseEntrez Gene 291133 RatEntrez Gene 7915 Human P51649</a>  |
| Background:           | This protein belongs to the aldehyde dehydrogenase family of proteins. This gene encodes a mitochondrial NAD(+)-dependent succinic semialdehyde dehydrogenase. A deficiency of this enzyme, known as 4-hydroxybutyricaciduria, is a rare inborn error in the metabolism of the neurotransmitter 4-aminobutyric acid (GABA). In response to the defect, physiologic fluids from patients accumulate GHB, a compound with numerous neuromodulatory properties. Two transcript variants encoding distinct isoforms have been identified for this gene. |
| Synonyms:             | SSADH; SSDH   |

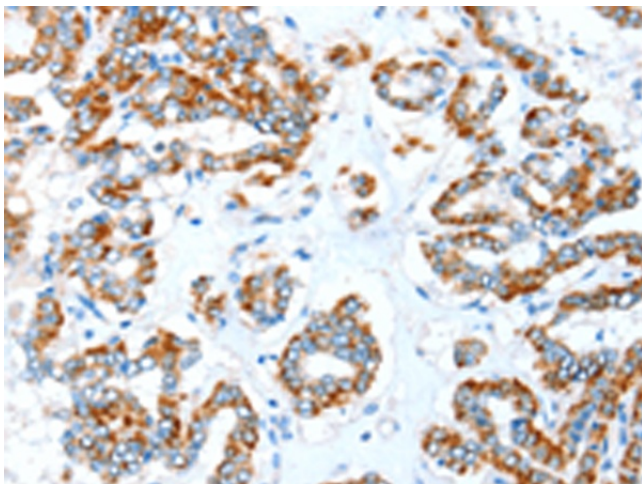


[View online »](#)

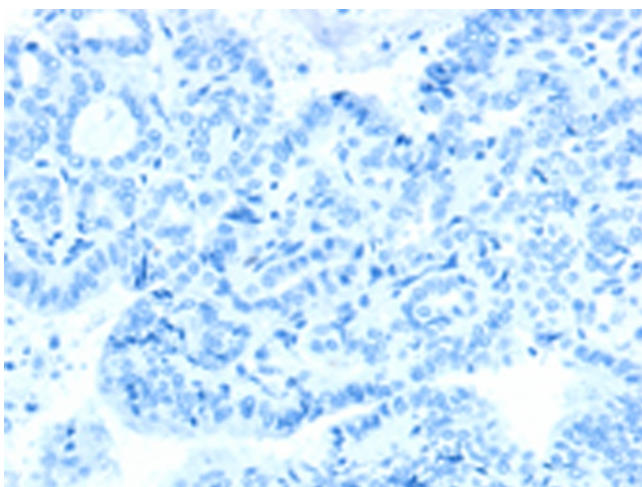
Protein Families: Druggable Genome

Protein Pathways: Alanine, aspartate and glutamate metabolism, Butanoate metabolism, Metabolic pathways

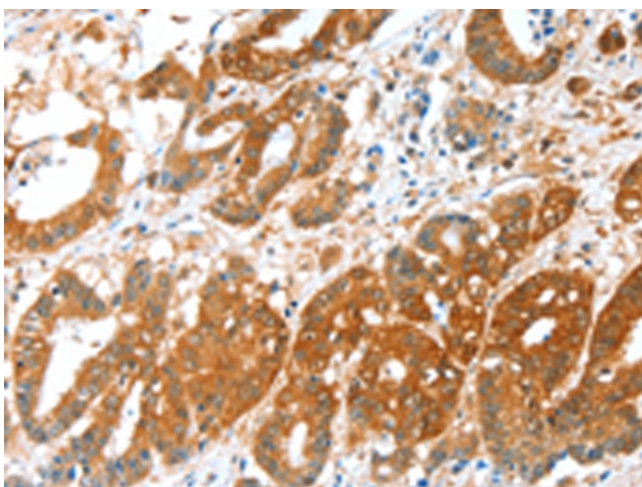
### Product images:



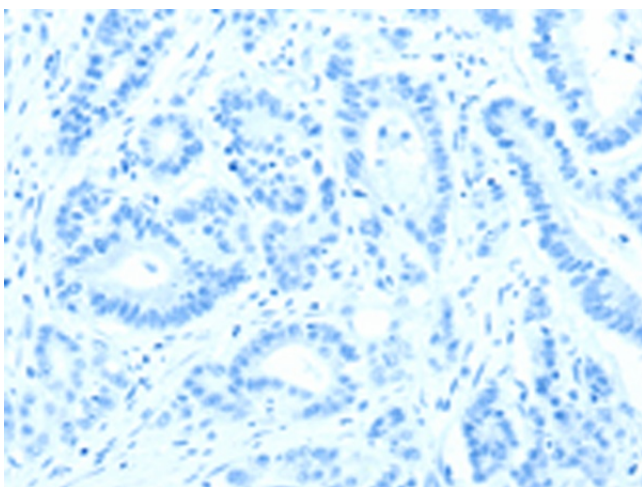
Immunohistochemistry of paraffin-embedded Human thyroid cancer tissue using TA323332 (ALDH5A1 Antibody) at dilution 1/35 (Original magnification: ×200)



Immunohistochemistry of paraffin-embedded Human thyroid cancer tissue using TA323332 (ALDH5A1 Antibody) at dilution 1/35, treated with synthetic peptide. (Original magnification: ×200)



Immunohistochemistry of paraffin-embedded Human colon cancer tissue using TA323332 (ALDH5A1 Antibody) at dilution 1/35 (Original magnification:  $\times 200$ )



Immunohistochemistry of paraffin-embedded Human colon cancer tissue using TA323332 (ALDH5A1 Antibody) at dilution 1/35, treated with synthetic peptide. (Original magnification:  $\times 200$ )