

## Product datasheet for **TA323331S**

### ALDH5A1 Rabbit Polyclonal Antibody

#### Product data:

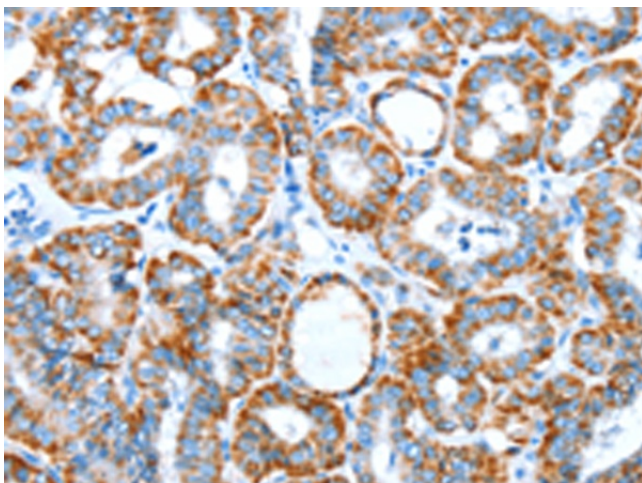
Product Type:	Primary Antibodies
Applications:	IHC
Recommended Dilution:	IHC: 50-200 Positive control: Human thyroid cancer Predicted cell location: Cytoplasm
Reactivity:	Human, Mouse, Rat
Host:	Rabbit
Isotype:	IgG
Clonality:	Polyclonal
Immunogen:	Synthetic peptide corresponding to a region derived from 514-529 amino acids of human aldehyde dehydrogenase 5 family, member A1
Formulation:	PBS pH7.3, 0.05% NaN <sub>3</sub> , 50% glycerol
Purification:	Antigen affinity purification
Conjugation:	Unconjugated
Storage:	Store at -20°C as received.
Stability:	Stable for 12 months from date of receipt.
Gene Name:	aldehyde dehydrogenase 5 family member A1
Database Link:	<a href="#">NP_001071</a> <a href="#">Entrez Gene 214579 Mouse</a> <a href="#">Entrez Gene 291133 Rat</a> <a href="#">Entrez Gene 7915 Human</a> <a href="#">P51649</a>
Background:	This protein belongs to the aldehyde dehydrogenase family of proteins. This gene encodes a mitochondrial NAD(+)-dependent succinic semialdehyde dehydrogenase. A deficiency of this enzyme, known as 4-hydroxybutyricaciduria, is a rare inborn error in the metabolism of the neurotransmitter 4-aminobutyric acid (GABA). In response to the defect, physiologic fluids from patients accumulate GHB, a compound with numerous neuromodulatory properties. Two transcript variants encoding distinct isoforms have been identified for this gene.
Synonyms:	SSADH; SSDH
Protein Families:	Druggable Genome



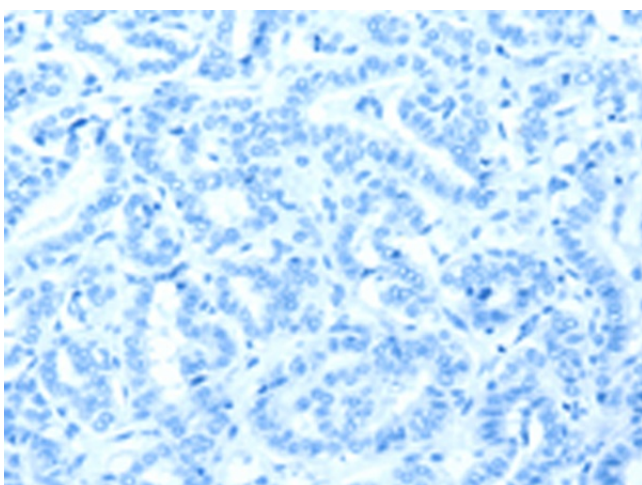
[View online »](#)

Protein Pathways: Alanine, aspartate and glutamate metabolism, Butanoate metabolism, Metabolic pathways

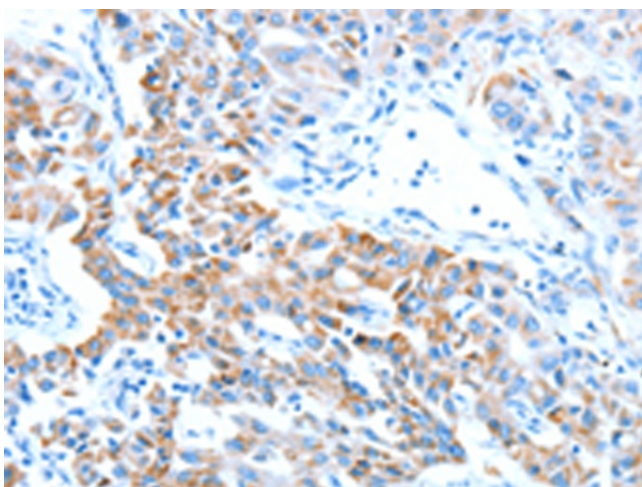
### Product images:



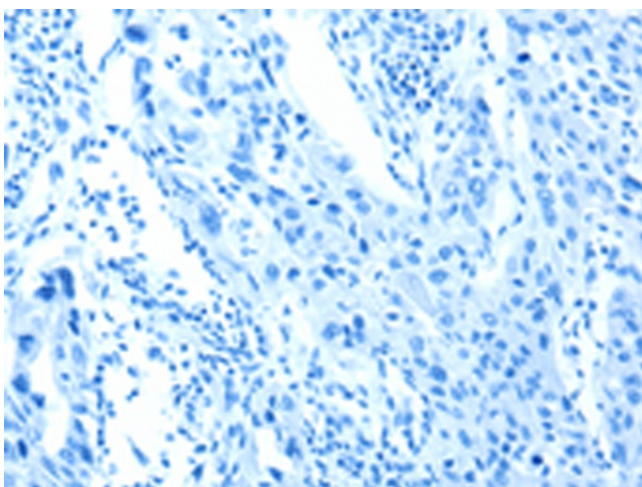
Immunohistochemistry of paraffin-embedded Human thyroid cancer tissue using [TA323331] (ALDH5A1 Antibody) at dilution 1/60 (Original magnification:  $\times 200$ )



Immunohistochemistry of paraffin-embedded Human thyroid cancer tissue using [TA323331] (ALDH5A1 Antibody) at dilution 1/60, treated with synthetic peptide. (Original magnification:  $\times 200$ )



Immunohistochemistry of paraffin-embedded Human lung cancer tissue using [TA323331] (ALDH5A1 Antibody) at dilution 1/60 (Original magnification:  $\times 200$ )



Immunohistochemistry of paraffin-embedded Human lung cancer tissue using [TA323331] (ALDH5A1 Antibody) at dilution 1/60, treated with synthetic peptide. (Original magnification:  $\times 200$ )