

## Product datasheet for **TA323330S**

### **CNG3 (CNGA3) Rabbit Polyclonal Antibody**

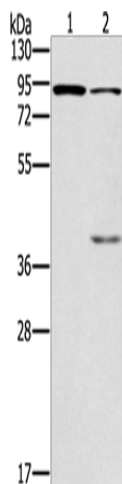
#### **Product data:**

<b>Product Type:</b>	Primary Antibodies
<b>Applications:</b>	WB
<b>Recommended Dilution:</b>	WB: 500-2000 WB positive control: Mouse kidney and brain tissue
<b>Reactivity:</b>	Human, Mouse
<b>Host:</b>	Rabbit
<b>Isotype:</b>	IgG
<b>Clonality:</b>	Polyclonal
<b>Immunogen:</b>	Fusion protein corresponding to a region derived from 482-605 amino acids of human cyclic nucleotide gated channel alpha 3
<b>Formulation:</b>	PBS pH7.3, 0.05% NaN <sub>3</sub> , 50% glycerol
<b>Purification:</b>	Antigen affinity purification
<b>Conjugation:</b>	Unconjugated
<b>Storage:</b>	Store at -20°C as received.
<b>Stability:</b>	Stable for 12 months from date of receipt.
<b>Predicted Protein Size:</b>	79 kDa
<b>Gene Name:</b>	cyclic nucleotide gated channel alpha 3
<b>Database Link:</b>	<a href="#">NP_001073347</a> <a href="#">Entrez Gene 12790 Mouse</a> <a href="#">Entrez Gene 1261 Human</a> <a href="#">Q16281</a>
<b>Background:</b>	This gene encodes a member of the cyclic nucleotide-gated cation channel protein family which is required for normal vision and olfactory signal transduction. Mutations in this gene are associated with achromatopsia (rod monochromacy) and color blindness. Two alternatively spliced transcripts encoding different isoforms have been described.
<b>Synonyms:</b>	ACHM2; CCNC1; CCNCa; CCNCalpha; CNCG3; CNG3
<b>Protein Families:</b>	Druggable Genome, Ion Channels: Cyclic nucleotide gated, Transmembrane
<b>Protein Pathways:</b>	Olfactory transduction



[View online »](#)

## Product images:



Gel: 6%SDS-PAGE

Lysate: 40 µg

Lane 1-2: Mouse kidney tissue

Mouse brain tissue

Primary antibody: [TA323330] (CNGA3 Antibody)  
at dilution 1/500

Secondary antibody: Goat anti rabbit IgG at  
1/8000 dilution

Exposure time: 1 minute