

## Product datasheet for **TA323329S**

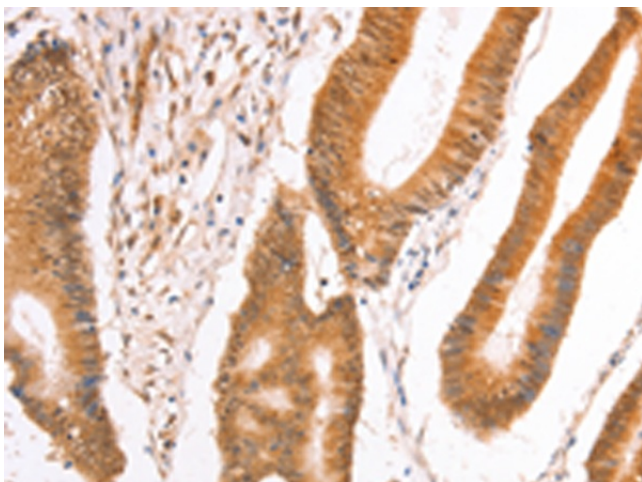
### **TAX1BP1 Rabbit Polyclonal Antibody**

#### **Product data:**

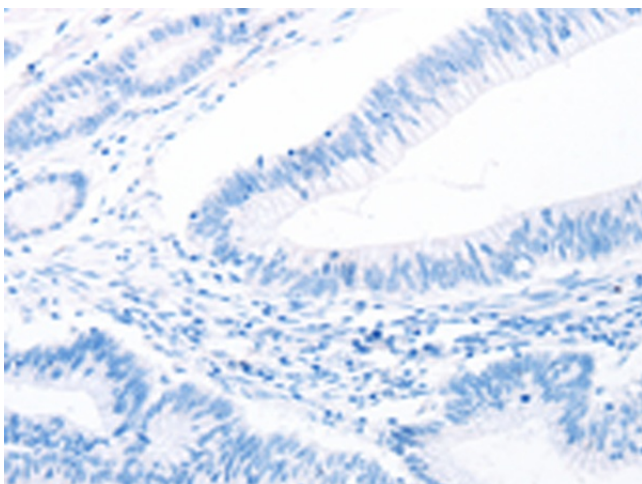
<b>Product Type:</b>	Primary Antibodies
<b>Applications:</b>	IHC
<b>Recommended Dilution:</b>	IHC: 50-200 Positive control: Human colon cancer Predicted cell location: Cytoplasm, Nucleus
<b>Reactivity:</b>	Human, Mouse, Rat
<b>Host:</b>	Rabbit
<b>Isotype:</b>	IgG
<b>Clonality:</b>	Polyclonal
<b>Immunogen:</b>	Fusion protein corresponding to a region derived from 180-420 amino acids of human Tax1 (human T-cell leukemia virus type I) binding protein 1
<b>Formulation:</b>	PBS pH7.3, 0.05% NaN <sub>3</sub> , 50% glycerol
<b>Purification:</b>	Antigen affinity purification
<b>Conjugation:</b>	Unconjugated
<b>Storage:</b>	Store at -20°C as received.
<b>Stability:</b>	Stable for 12 months from date of receipt.
<b>Gene Name:</b>	Tax1 binding protein 1
<b>Database Link:</b>	<a href="#">NP_006015</a> <a href="#">Entrez Gene 52440 Mouse</a> <a href="#">Entrez Gene 246244 Rat</a> <a href="#">Entrez Gene 8887 Human</a> <a href="#">Q86VP1</a>
<b>Background:</b>	This gene encodes a HTLV-1 tax1 binding protein. The encoded protein interacts with TNFAIP3; and inhibits TNF-induced apoptosis by mediating the TNFAIP3 anti-apoptotic activity. Degradation of this protein by caspase-3-like family proteins is associated with apoptosis induced by TNF. This protein may also have a role in the inhibition of inflammatory signaling pathways. Alternatively spliced transcript variants encoding different isoforms have been found for this gene.[
<b>Synonyms:</b>	CALCOCO3; T6BP; TXBP151
<b>Protein Families:</b>	Druggable Genome



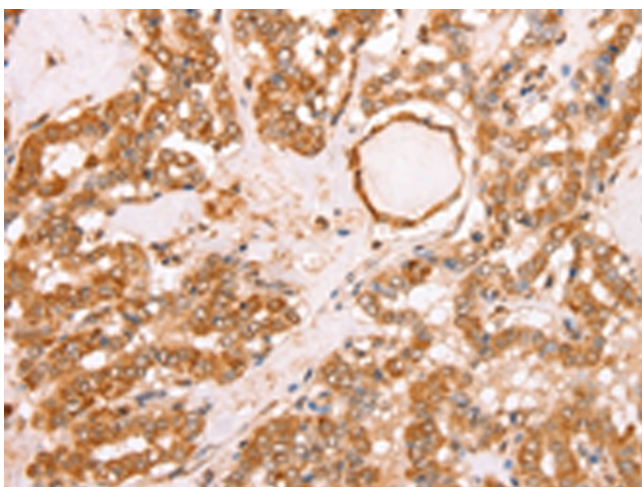
[View online »](#)

**Product images:**

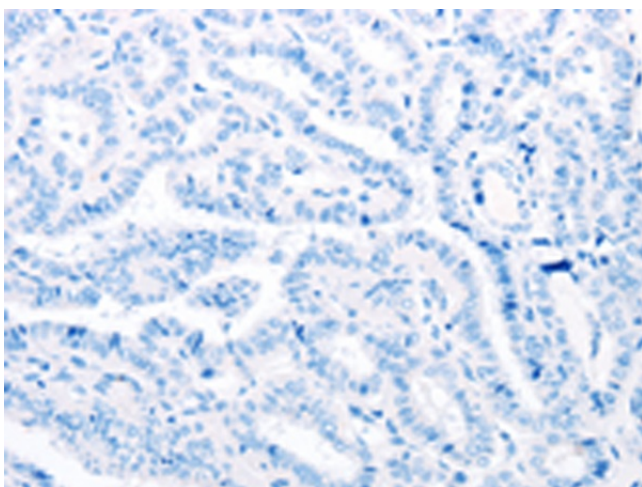
Immunohistochemistry of paraffin-embedded Human colon cancer tissue using [TA323329] (TAX1BP1 Antibody) at dilution 1/40 (Original magnification:  $\times 200$ )



Immunohistochemistry of paraffin-embedded Human colon cancer tissue using [TA323329] (TAX1BP1 Antibody) at dilution 1/40, treated with fusion protein. (Original magnification:  $\times 200$ )



Immunohistochemistry of paraffin-embedded Human thyroid cancer tissue using [TA323329] (TAX1BP1 Antibody) at dilution 1/40 (Original magnification:  $\times 200$ )



Immunohistochemistry of paraffin-embedded Human thyroid cancer tissue using [TA323329] (TAX1BP1 Antibody) at dilution 1/40, treated with fusion protein. (Original magnification:  $\times 200$ )