

Product datasheet for **TA323329**

TAX1BP1 Rabbit Polyclonal Antibody

Product data:

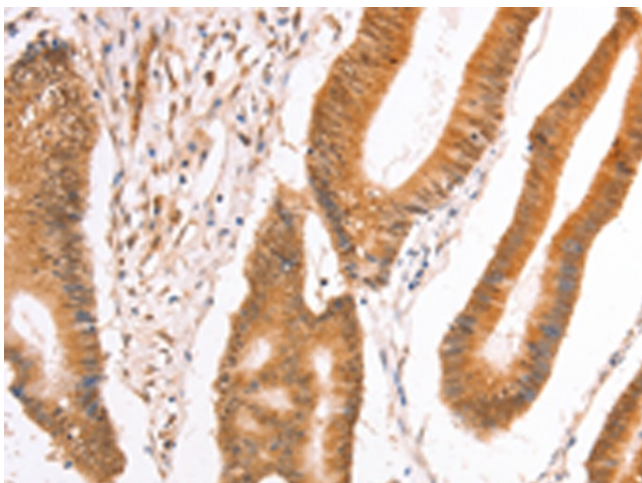
Product Type:	Primary Antibodies
Applications:	IHC
Recommended Dilution:	IHC: 50-200 Positive control: Human colon cancer Predicted cell location: Cytoplasm, Nucleus
Reactivity:	Human, Mouse, Rat
Host:	Rabbit
Isotype:	IgG
Clonality:	Polyclonal
Immunogen:	Fusion protein corresponding to a region derived from 180-420 amino acids of human Tax1 (human T-cell leukemia virus type I) binding protein 1
Formulation:	PBS pH7.3, 0.05% NaN ₃ , 50% glycerol
Concentration:	lot specific
Purification:	Antigen affinity purification
Conjugation:	Unconjugated
Storage:	Store at -20°C as received.
Stability:	Stable for 12 months from date of receipt.
Gene Name:	Tax1 binding protein 1
Database Link:	NP_006015 Entrez Gene 52440 MouseEntrez Gene 246244 RatEntrez Gene 8887 Human Q86VP1
Background:	This gene encodes a HTLV-1 tax1 binding protein. The encoded protein interacts with TNFAIP3; and inhibits TNF-induced apoptosis by mediating the TNFAIP3 anti-apoptotic activity. Degradation of this protein by caspase-3-like family proteins is associated with apoptosis induced by TNF. This protein may also have a role in the inhibition of inflammatory signaling pathways. Alternatively spliced transcript variants encoding different isoforms have been found for this gene.[]
Synonyms:	CALCOCO3; T6BP; TXBP151



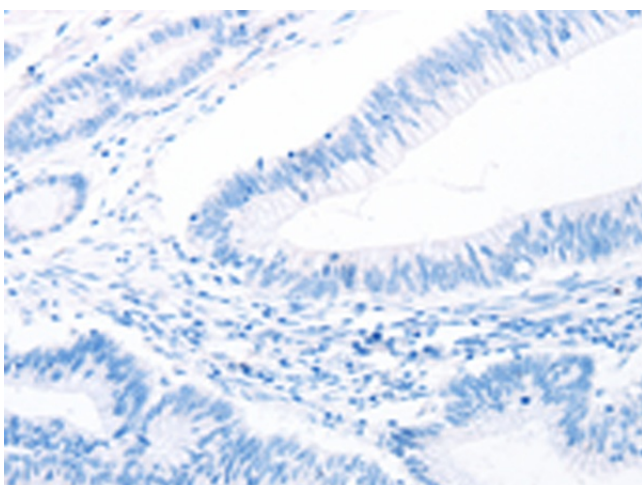
[View online »](#)

Protein Families: Druggable Genome

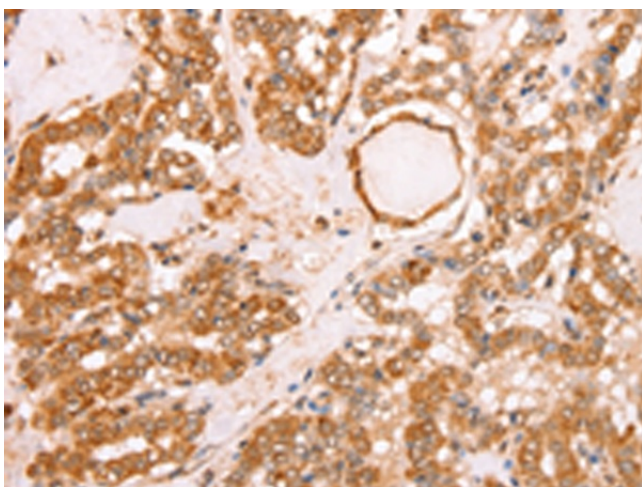
Product images:



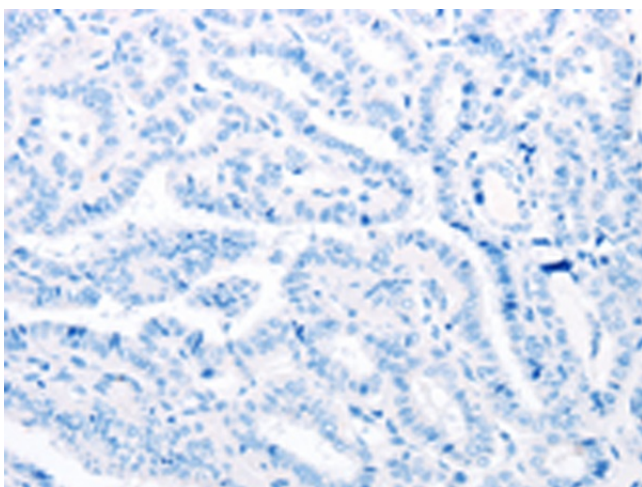
Immunohistochemistry of paraffin-embedded Human colon cancer tissue using TA323329 (TAX1BP1 Antibody) at dilution 1/40 (Original magnification: $\times 200$)



Immunohistochemistry of paraffin-embedded Human colon cancer tissue using TA323329 (TAX1BP1 Antibody) at dilution 1/40, treated with fusion protein. (Original magnification: $\times 200$)



Immunohistochemistry of paraffin-embedded Human thyroid cancer tissue using TA323329 (TAX1BP1 Antibody) at dilution 1/40 (Original magnification: $\times 200$)



Immunohistochemistry of paraffin-embedded Human thyroid cancer tissue using TA323329 (TAX1BP1 Antibody) at dilution 1/40, treated with fusion protein. (Original magnification: $\times 200$)