

Product datasheet for **TA323322**

PGA3 Rabbit Polyclonal Antibody

Product data:

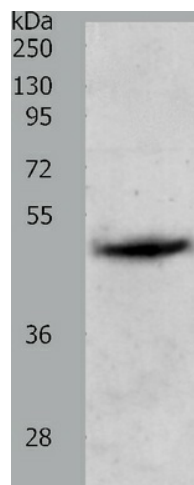
Product Type:	Primary Antibodies
Applications:	IHC, WB
Recommended Dilution:	ELISA: 1:1000-5000, WB: 1:500-2000, IHC: 1:25-100
Reactivity:	Human, Mouse, Rat
Host:	Rabbit
Isotype:	IgG
Clonality:	Polyclonal
Immunogen:	Synthetic peptide corresponding to a region derived from 112-125 amino acids of Human pepsinogen 3, group I (pepsinogen A)
Formulation:	PBS pH7.3, 0.05% NaN ₃ , 50% glycerol
Concentration:	lot specific
Purification:	Antigen affinity purification
Conjugation:	Unconjugated
Storage:	Store at -20°C as received.
Stability:	Stable for 12 months from date of receipt.
Predicted Protein Size:	42 kDa
Gene Name:	pepsinogen 3, group I (pepsinogen A)
Database Link:	NP_001073275 Entrez Gene 643834 Human P0DJD8
Background:	The genes coding for human pepsinogen (PGA3; PGA4; and PGA5) were assigned to chromosome region 11q13 by in situ hybridization. Previously we localized the PGA gene complex to a centromeric region of chromosome 11 (p11----q13) by Southern blot analysis of mouse-human somatic cell hybrids. Shows particularly broad specificity; although bonds involving phenylalanine and leucine are preferred; many others are also cleaved to some extent.
Synonyms:	PGA4; PGA5



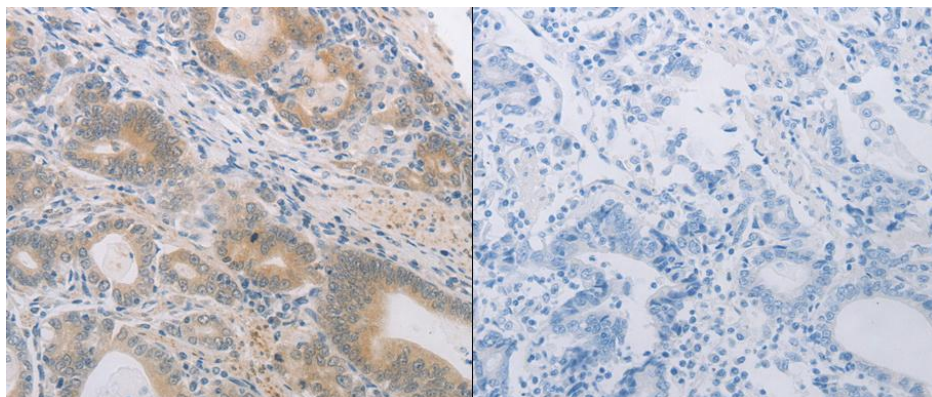
[View online »](#)

Protein Families: Druggable Genome

Product images:



Predicted band size: 42 kDa. Positive control: Human liver cancer tissue lysate. Recommended dilution: 1/500-2000. (Gel: 10%SDS-PAGE Lysate: 60 ug per lane Primary antibody: 1/1000 dilution Secondary antibody: Goat anti Rabbit IgG - H&L (HRP) at 1/10000 dilution Exposure time: 10 minutes)



Predicted cell location: Cytoplasm. Positive control: Human gastric cancer tissue. Recommended dilution: 1/25-100 The image on the left is immunohistochemistry of paraffin-embedded human gastric cancer tissue using PGA3 antibody at dilution 1/60, on the right is treated with the synthetic peptide. (Original magnification:x200)