

Product datasheet for **TA323316**

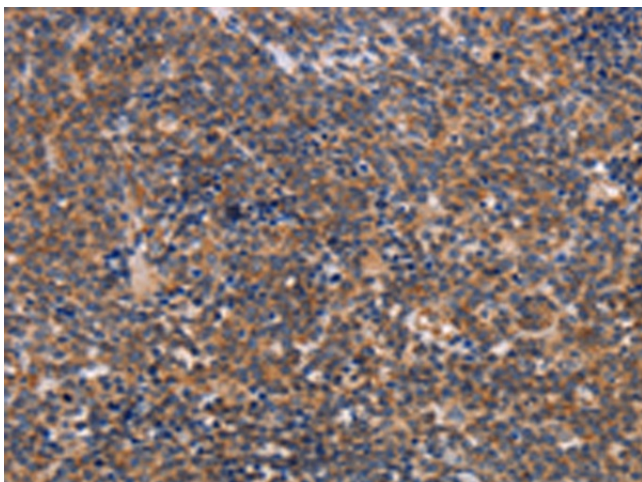
ALG9 Rabbit Polyclonal Antibody

Product data:

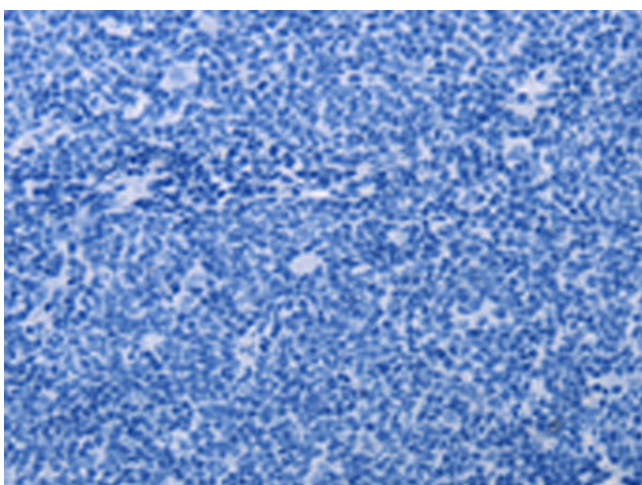
Product Type:	Primary Antibodies
Applications:	IHC
Recommended Dilution:	IHC: 50-200 Positive control: Human lymphoma Predicted cell location: Cytoplasm
Reactivity:	Human, Mouse
Host:	Rabbit
Isotype:	IgG
Clonality:	Polyclonal
Immunogen:	Fusion protein corresponding to a region derived from 427-611 amino acids of human ALG9, alpha-1,2-mannosyltransferase
Formulation:	PBS pH7.3, 0.05% NaN ₃ , 50% glycerol
Concentration:	lot specific
Purification:	Antigen affinity purification
Conjugation:	Unconjugated
Storage:	Store at -20°C as received.
Stability:	Stable for 12 months from date of receipt.
Gene Name:	ALG9, alpha-1,2-mannosyltransferase
Database Link:	NP_079016 Entrez Gene 102580 Mouse Entrez Gene 79796 Human Q9H6U8
Background:	This gene encodes an alpha-1,2-mannosyltransferase enzyme that functions in lipid-linked oligosaccharide assembly. Mutations in this gene result in congenital disorder of glycosylation type II. Multiple transcript variants encoding different isoforms have been found for this gene.
Synonyms:	CDG1L; DIBD1; GIKANIS; LOH11CR1J
Protein Families:	Transmembrane
Protein Pathways:	Metabolic pathways, N-Glycan biosynthesis



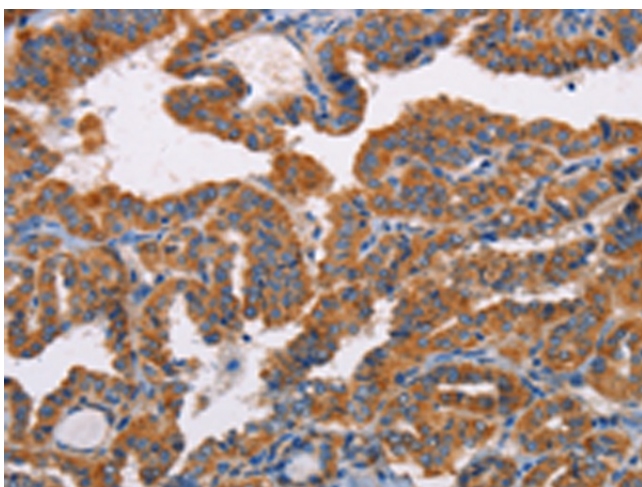
[View online »](#)

Product images:

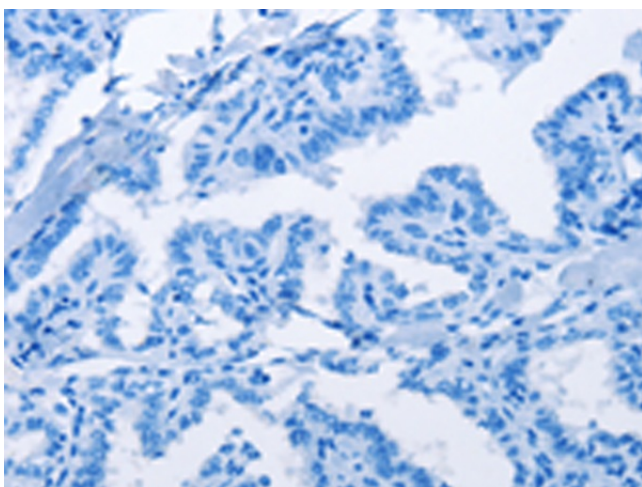
Immunohistochemistry of paraffin-embedded Human lymphoma tissue using TA323316 (ALG9 Antibody) at dilution 1/30 (Original magnification: ×200)



Immunohistochemistry of paraffin-embedded Human lymphoma tissue using TA323316 (ALG9 Antibody) at dilution 1/30, treated with fusion protein. (Original magnification: ×200)



Immunohistochemistry of paraffin-embedded Human thyroid cancer tissue using TA323316 (ALG9 Antibody) at dilution 1/30 (Original magnification: $\times 200$)



Immunohistochemistry of paraffin-embedded Human thyroid cancer tissue using TA323316 (ALG9 Antibody) at dilution 1/30, treated with fusion protein. (Original magnification: $\times 200$)