

Product datasheet for **TA323312**

AADAC Rabbit Polyclonal Antibody

Product data:

Product Type:	Primary Antibodies
Applications:	IHC, WB
Recommended Dilution:	WB: 500-2000 WB positive control: Human fetal liver and liver cancer tissue IHC: 25-100 Positive control: Human colon cancer Predicted cell location: Cytoplasm
Reactivity:	Human
Host:	Rabbit
Isotype:	IgG
Clonality:	Polyclonal
Immunogen:	Fusion protein corresponding to C terminal 250 amino acids of human arylacetamide deacetylase
Formulation:	PBS pH7.3, 0.05% NaN ₃ , 50% glycerol
Concentration:	lot specific
Purification:	Antigen affinity purification
Conjugation:	Unconjugated
Storage:	Store at -20°C as received.
Stability:	Stable for 12 months from date of receipt.
Predicted Protein Size:	46 kDa
Gene Name:	arylacetamide deacetylase
Database Link:	NP_001077 Entrez Gene 13 Human P22760



[View online »](#)

Background:

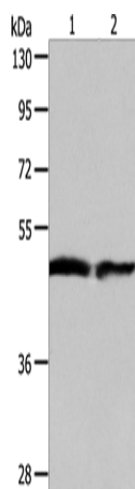
Microsomal arylacetamide deacetylase competes against the activity of cytosolic arylamine N-acetyltransferase; which catalyzes one of the initial biotransformation pathways for arylamine and heterocyclic amine carcinogens. Arylacetamide deacetylation is an important enzyme activity in the metabolic activation of arylamine substrates to ultimate carcinogens. Displays major serine hydrolase activity in liver microsomes. Hydrolyzes also flutamide; which is an antiandrogen drug used for the treatment of prostate cancer that occasionally causes severe hepatotoxicity. Displays cellular triglyceride lipase activity in liver. Increases intracellular fatty acids derived from hydrolysis of newly formed triglyceride stores.

Synonyms:

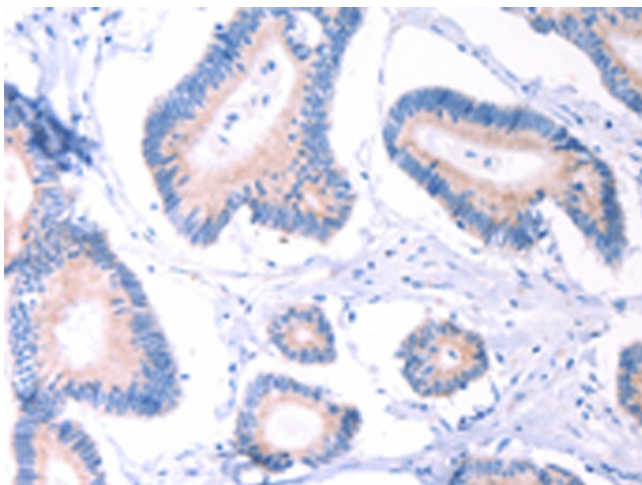
CES5A1; DAC

Protein Families:

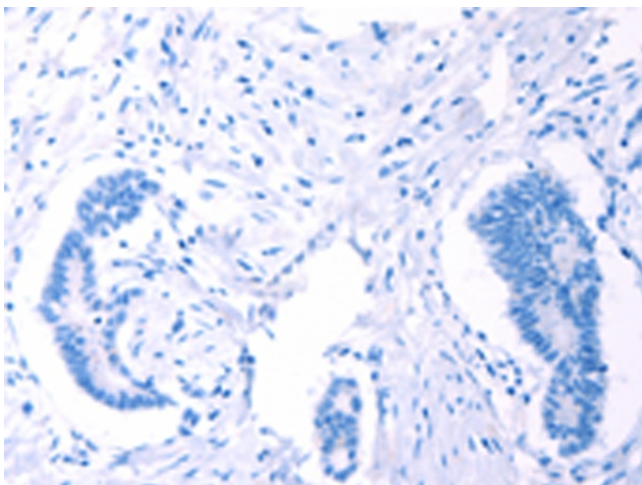
Druggable Genome, Transmembrane

Product images:

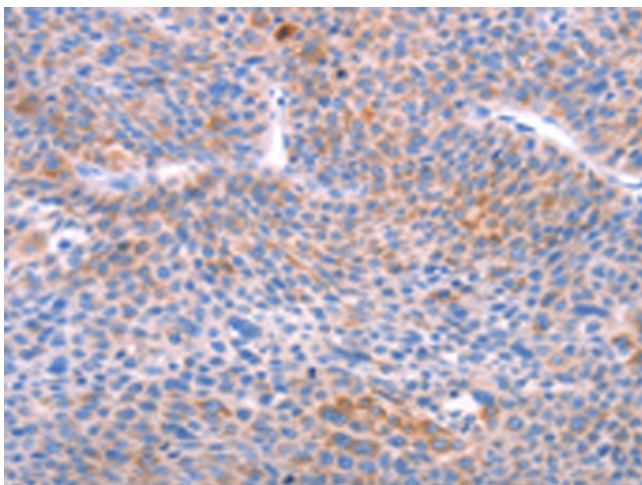
Gel: 10%SDS-PAGE
Lysate: 40 μ g
Lane 1-2: Human fetal liver tissue
Human liver cancer tissue
Primary antibody: TA323312 (AADAC Antibody) at dilution 1/550
Secondary antibody: Goat anti rabbit IgG at 1/8000 dilution
Exposure time: 1 minute



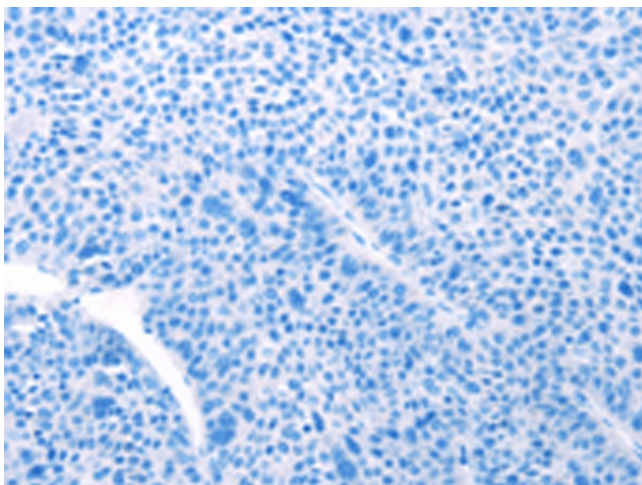
Immunohistochemistry of paraffin-embedded Human colon cancer tissue using TA323312 (AADAC Antibody) at dilution 1/30 (Original magnification: \times 200)



Immunohistochemistry of paraffin-embedded Human colon cancer tissue using TA323312 (AADAC Antibody) at dilution 1/30, treated with fusion protein. (Original magnification: $\times 200$)



Immunohistochemistry of paraffin-embedded Human liver cancer tissue using TA323312 (AADAC Antibody) at dilution 1/30 (Original magnification: $\times 200$)



Immunohistochemistry of paraffin-embedded Human liver cancer tissue using TA323312 (AADAC Antibody) at dilution 1/30, treated with fusion protein. (Original magnification: $\times 200$)