

Product datasheet for **TA323310S**

MYSM1 Rabbit Polyclonal Antibody

Product data:

Product Type:	Primary Antibodies
Applications:	IHC, WB
Recommended Dilution:	WB: 500-2000 WB positive control: Mouse kidney tissue IHC: 50-200 Positive control: Human gastric cancer Predicted cell location: Nucleus
Reactivity:	Human, Mouse
Host:	Rabbit
Isotype:	IgG
Clonality:	Polyclonal
Immunogen:	Synthetic peptide corresponding to a region derived from 808-821 amino acids of Human Myb-like, SWIRM and MPN domains 1
Formulation:	PBS pH7.3, 0.05% NaN ₃ , 50% glycerol
Purification:	Antigen affinity purification
Conjugation:	Unconjugated
Storage:	Store at -20°C as received.
Stability:	Stable for 12 months from date of receipt.
Predicted Protein Size:	95 kDa
Gene Name:	Myb like, SWIRM and MPN domains 1
Database Link:	NP_001078956 Entrez Gene 320713 Mouse Entrez Gene 114803 Human Q5VWJ2



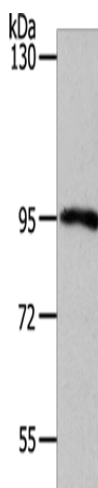
[View online »](#)

Background: Metalloprotease that specifically deubiquitinates monoubiquitinated histone H2A; a specific tag for epigenetic transcriptional repression; thereby acting as a coactivator. Preferentially deubiquitinates monoubiquitinated H2A in hyperacetylated nucleosomes. Deubiquitination of histone H2A leads to facilitate the phosphorylation and dissociation of histone H1 from the nucleosome. Acts as a coactivator by participating in the initiation and elongation steps of androgen receptor (AR)-induced gene activation.

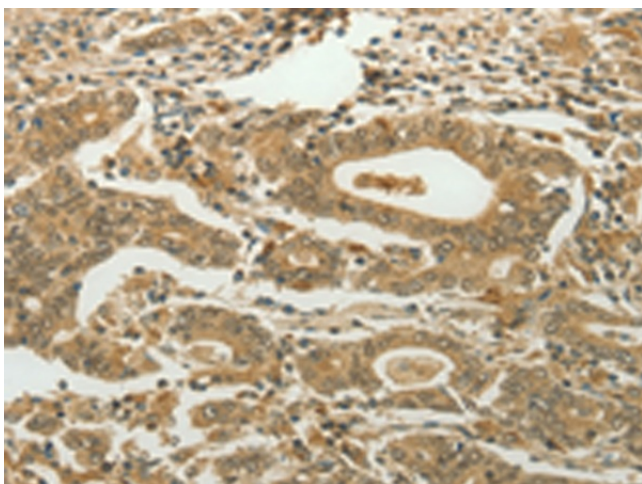
Synonyms: 2A-DUB; 2ADUB

Protein Families: Protease

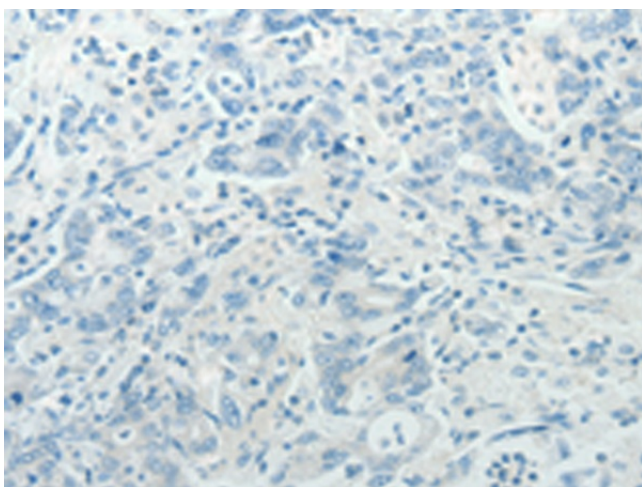
Product images:



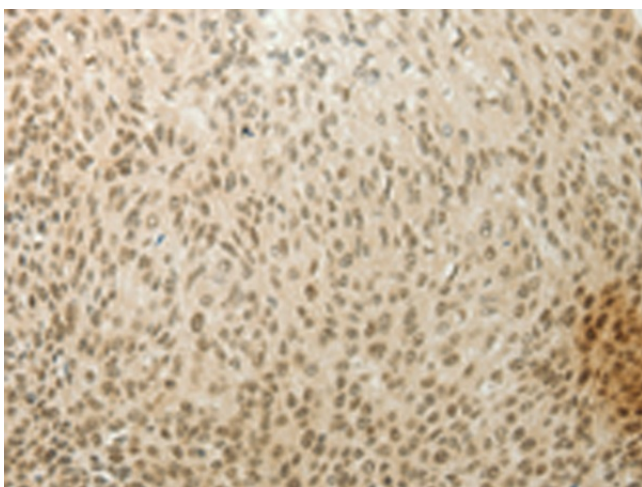
Gel: 8%SDS-PAGE
Lysate: 50 μ g
Lane: Mouse kidney tissue
Primary antibody: [TA323310] (MYSM1 Antibody) at dilution 1/1100
Secondary antibody: Goat anti rabbit IgG at 1/8000 dilution
Exposure time: 40 seconds



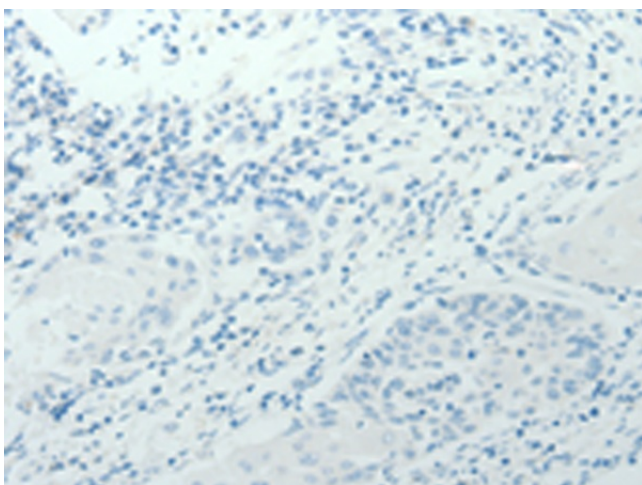
Immunohistochemistry of paraffin-embedded Human gastric cancer tissue using [TA323310] (MYSM1 Antibody) at dilution 1/60 (Original magnification: \times 200)



Immunohistochemistry of paraffin-embedded Human gastric cancer tissue using [TA323310] (MYSM1 Antibody) at dilution 1/60, treated with synthetic peptide. (Original magnification: ×200)



Immunohistochemistry of paraffin-embedded Human cervical cancer tissue using [TA323310] (MYSM1 Antibody) at dilution 1/60 (Original magnification: ×200)



Immunohistochemistry of paraffin-embedded Human cervical cancer tissue using [TA323310] (MYSM1 Antibody) at dilution 1/60, treated with synthetic peptide. (Original magnification: ×200)