

## Product datasheet for **TA323310**

### **MYSM1 Rabbit Polyclonal Antibody**

#### **Product data:**

<b>Product Type:</b>	Primary Antibodies
<b>Applications:</b>	IHC, WB
<b>Recommended Dilution:</b>	WB: 500-2000 WB positive control: Mouse kidney tissue IHC: 50-200 Positive control: Human gastric cancer Predicted cell location: Nucleus
<b>Reactivity:</b>	Human, Mouse
<b>Host:</b>	Rabbit
<b>Isotype:</b>	IgG
<b>Clonality:</b>	Polyclonal
<b>Immunogen:</b>	Synthetic peptide corresponding to a region derived from 808-821 amino acids of Human Myb-like, SWIRM and MPN domains 1
<b>Formulation:</b>	PBS pH7.3, 0.05% NaN <sub>3</sub> , 50% glycerol
<b>Concentration:</b>	lot specific
<b>Purification:</b>	Antigen affinity purification
<b>Conjugation:</b>	Unconjugated
<b>Storage:</b>	Store at -20°C as received.
<b>Stability:</b>	Stable for 12 months from date of receipt.
<b>Predicted Protein Size:</b>	95 kDa
<b>Gene Name:</b>	Myb like, SWIRM and MPN domains 1
<b>Database Link:</b>	<a href="#">NP_001078956</a> <a href="#">Entrez Gene 320713 Mouse</a> <a href="#">Entrez Gene 114803 Human</a> <a href="#">Q5VWJ2</a>



[View online »](#)

**Background:**

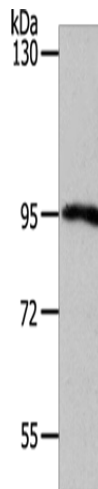
Metalloprotease that specifically deubiquitinates monoubiquitinated histone H2A; a specific tag for epigenetic transcriptional repression; thereby acting as a coactivator. Preferentially deubiquitinates monoubiquitinated H2A in hyperacetylated nucleosomes. Deubiquitination of histone H2A leads to facilitate the phosphorylation and dissociation of histone H1 from the nucleosome. Acts as a coactivator by participating in the initiation and elongation steps of androgen receptor (AR)-induced gene activation.

**Synonyms:**

2A-DUB; 2ADUB

**Protein Families:**

Protease

**Product images:**

Gel: 8%SDS-PAGE

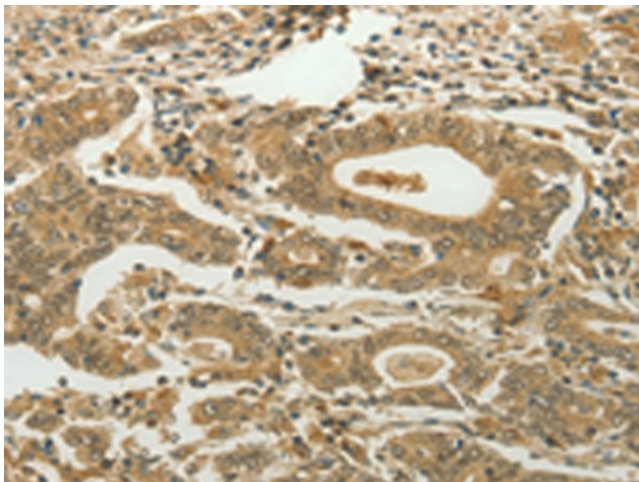
Lysate: 50  $\mu$ g

Lane: Mouse kidney tissue

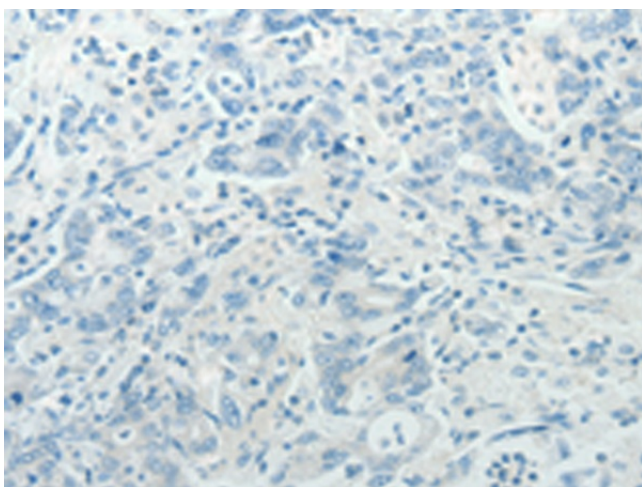
Primary antibody: TA323310 (MYSM1 Antibody) at dilution 1/1100

Secondary antibody: Goat anti rabbit IgG at 1/8000 dilution

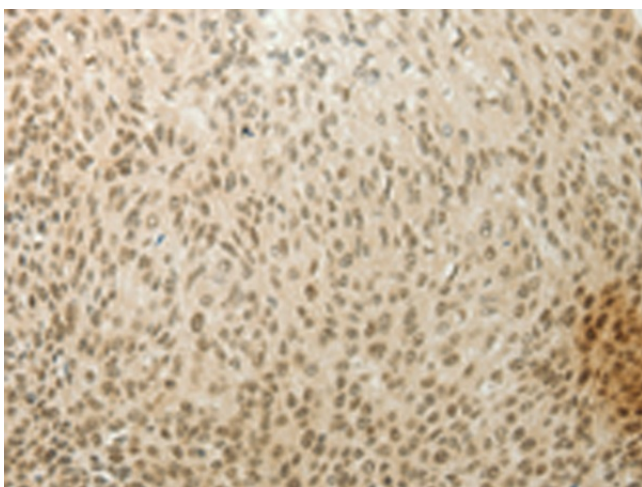
Exposure time: 40 seconds



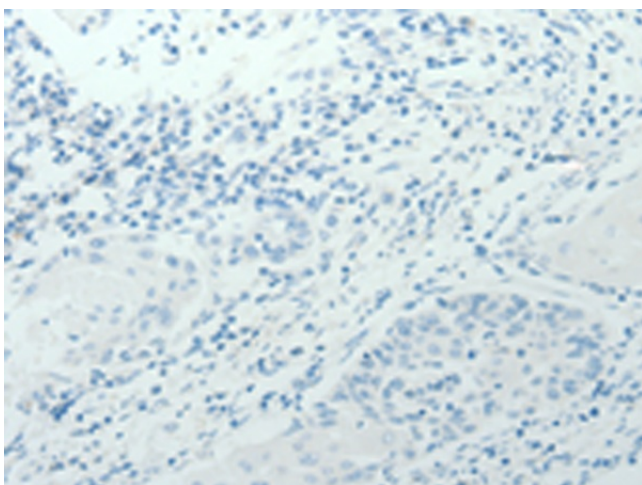
Immunohistochemistry of paraffin-embedded Human gastric cancer tissue using TA323310 (MYSM1 Antibody) at dilution 1/60 (Original magnification:  $\times$ 200)



Immunohistochemistry of paraffin-embedded Human gastric cancer tissue using TA323310 (MYSM1 Antibody) at dilution 1/60, treated with synthetic peptide. (Original magnification: ×200)



Immunohistochemistry of paraffin-embedded Human cervical cancer tissue using TA323310 (MYSM1 Antibody) at dilution 1/60 (Original magnification: ×200)



Immunohistochemistry of paraffin-embedded Human cervical cancer tissue using TA323310 (MYSM1 Antibody) at dilution 1/60, treated with synthetic peptide. (Original magnification: ×200)