

Product datasheet for **TA323309**

MYSM1 Rabbit Polyclonal Antibody

Product data:

Product Type:	Primary Antibodies
Applications:	IHC
Recommended Dilution:	IHC: 50-200 Positive control: Human ovarian cancer Predicted cell location: Nucleus
Reactivity:	Human
Host:	Rabbit
Isotype:	IgG
Clonality:	Polyclonal
Immunogen:	Synthetic peptide corresponding to a region derived from 808-821 amino acids of Human Myb-like, SWIRM and MPN domains 1
Formulation:	PBS pH7.3, 0.05% NaN ₃ , 50% glycerol
Concentration:	lot specific
Purification:	Antigen affinity purification
Conjugation:	Unconjugated
Storage:	Store at -20°C as received.
Stability:	Stable for 12 months from date of receipt.
Gene Name:	Myb like, SWIRM and MPN domains 1
Database Link:	NP_001078956 Entrez Gene 114803 Human Q5VVJ2
Background:	Metalloprotease that specifically deubiquitinates monoubiquitinated histone H2A; a specific tag for epigenetic transcriptional repression; thereby acting as a coactivator. Preferentially deubiquitinates monoubiquitinated H2A in hyperacetylated nucleosomes. Deubiquitination of histone H2A leads to facilitate the phosphorylation and dissociation of histone H1 from the nucleosome. Acts as a coactivator by participating in the initiation and elongation steps of androgen receptor (AR)-induced gene activation. Component of a large chromatin remodeling complex; at least composed of MYSM1; PCAF; RBM10 and KIF11/TRIP5. Binds histones

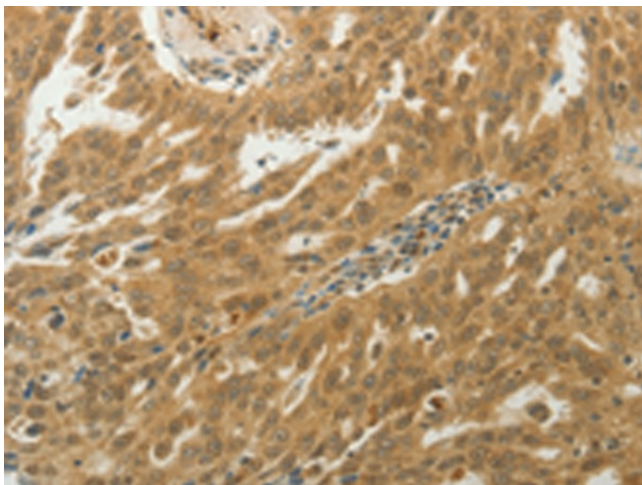


[View online »](#)

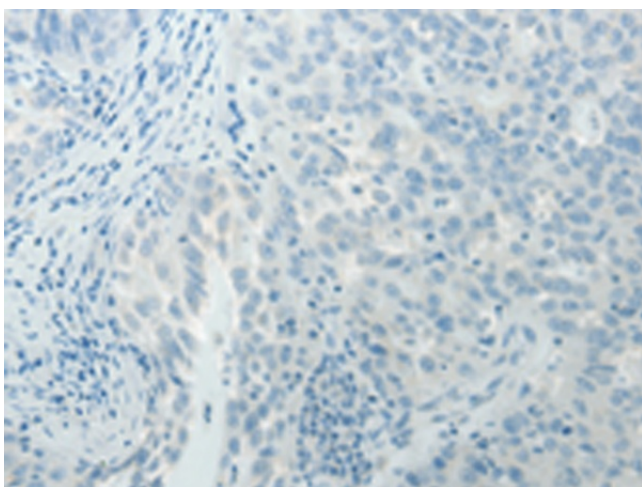
Synonyms: 2A-DUB; 2ADUB

Protein Families: Protease

Product images:



Immunohistochemistry of paraffin-embedded Human ovarian cancer tissue using TA323309 (MYSM1 Antibody) at dilution 1/50 (Original magnification: $\times 200$)



Immunohistochemistry of paraffin-embedded Human ovarian cancer tissue using TA323309 (MYSM1 Antibody) at dilution 1/50, treated with synthetic peptide. (Original magnification: $\times 200$)