

## Product datasheet for **TA323307**

### alpha 1 Antichymotrypsin (SERPINA3) Rabbit Polyclonal Antibody

#### Product data:

Product Type:	Primary Antibodies
Applications:	IHC, WB
Recommended Dilution:	WB: 200-1000 WB positive control: Human colorectal cancer tissue lysate IHC: 25-50 Positive control: Human gastric cancer Predicted cell location: Secreted
Reactivity:	Human
Host:	Rabbit
Isotype:	IgG
Clonality:	Polyclonal
Immunogen:	Synthetic peptide corresponding to a region derived from 290-303 amino acids of Human Alpha-1-antichymotrypsin
Formulation:	PBS pH7.3, 0.05% NaN <sub>3</sub> , 50% glycerol
Concentration:	lot specific
Purification:	Antigen affinity purification
Conjugation:	Unconjugated
Storage:	Store at -20°C as received.
Stability:	Stable for 12 months from date of receipt.
Predicted Protein Size:	48 kDa
Gene Name:	serpin family A member 3
Database Link:	<a href="#">NP_001076</a> <a href="#">Entrez Gene 12 Human P01011</a>



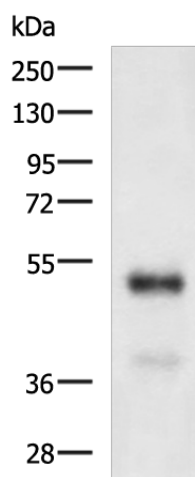
[View online »](#)

**Background:** The protein encoded by this gene is a plasma protease inhibitor and member of the serine protease inhibitor class. Polymorphisms in this protein appear to be tissue specific and influence protease targeting. Variations in this protein's sequence have been implicated in Alzheimer's disease; and deficiency of this protein has been associated with liver disease. Mutations have been identified in patients with Parkinson disease and chronic obstructive pulmonary disease.

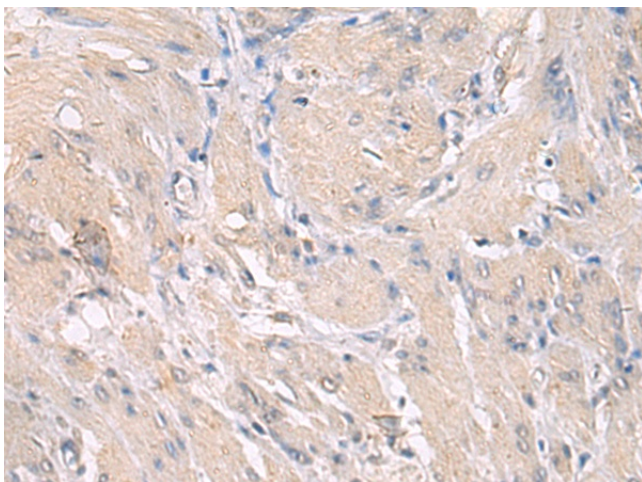
**Synonyms:** AACT; ACT; GIG24; GIG25

**Protein Families:** Druggable Genome, Secreted Protein

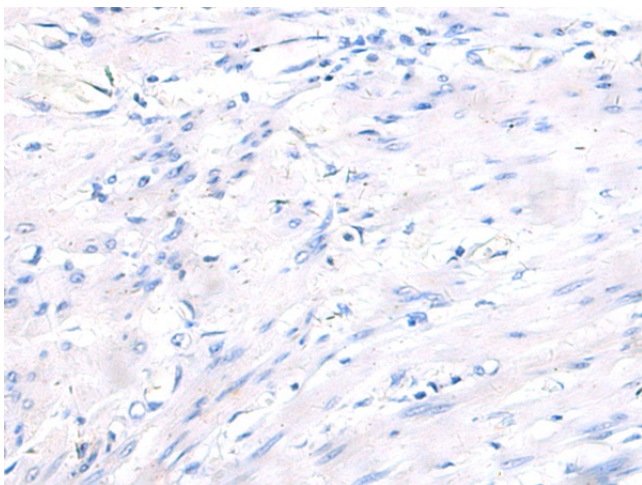
### Product images:



Gel: 8%SDS-PAGE  
Lysate: 40  $\mu$ g  
Lane: Human colorectal cancer tissue lysate  
Primary antibody: TA323307 (SERPINA3 Antibody) at dilution 1/400  
Secondary antibody: Goat anti rabbit IgG at 1/5000 dilution  
Exposure time: 3 minutes



Immunohistochemistry of paraffin-embedded Human gastric cancer tissue using TA323307 (SERPINA3 Antibody) at dilution 1/30 (Original magnification:  $\times$ 200)



Immunohistochemistry of paraffin-embedded Human gastric cancer tissue using TA323307 (SERPINA3 Antibody) at dilution 1/30, treated with synthetic peptide. (Original magnification: ×200)