

## Product datasheet for **TA323306**

### alpha 1 Antichymotrypsin (SERPINA3) Rabbit Polyclonal Antibody

#### Product data:

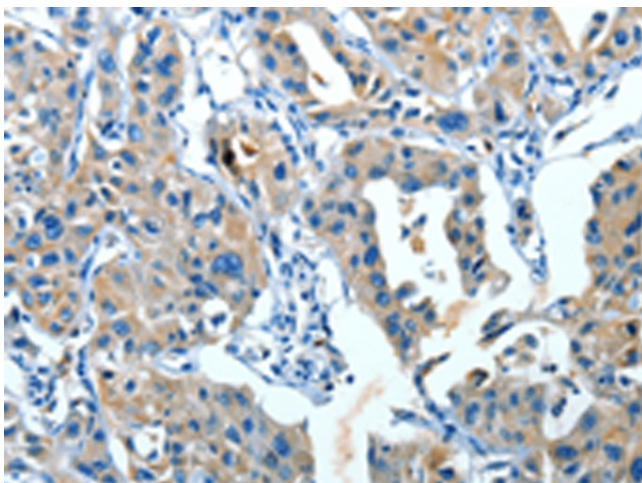
Product Type:	Primary Antibodies
Applications:	IHC
Recommended Dilution:	IHC: 25-100 Positive control: Human lung cancer Predicted cell location: Cytoplasm
Reactivity:	Human
Host:	Rabbit
Isotype:	IgG
Clonality:	Polyclonal
Immunogen:	Fusion protein corresponding to C terminal 300 amino acids of human serpin peptidase inhibitor, clade A (alpha-1 antiproteinase, antitrypsin), member 3
Formulation:	PBS pH7.3, 0.05% NaN <sub>3</sub> , 50% glycerol
Concentration:	lot specific
Purification:	Antigen affinity purification
Conjugation:	Unconjugated
Storage:	Store at -20°C as received.
Stability:	Stable for 12 months from date of receipt.
Gene Name:	serpin family A member 3
Database Link:	<a href="#">NP_001076</a> <a href="#">Entrez Gene 12 Human P01011</a>
Background:	The protein encoded by this gene is a plasma protease inhibitor and member of the serine protease inhibitor class. Polymorphisms in this protein appear to be tissue specific and influence protease targeting. Variations in this protein's sequence have been implicated in Alzheimer's disease, and deficiency of this protein has been associated with liver disease. Mutations have been identified in patients with Parkinson disease and chronic obstructive pulmonary disease.
Synonyms:	AACT; ACT; GIG24; GIG25



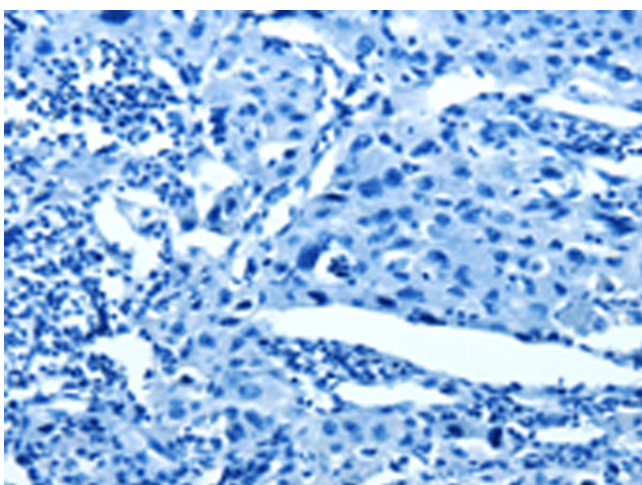
[View online »](#)

Protein Families: Druggable Genome, Secreted Protein

### Product images:



Immunohistochemistry of paraffin-embedded Human lung cancer tissue using TA323306 (SERPINA3 Antibody) at dilution 1/35 (Original magnification:  $\times 200$ )



Immunohistochemistry of paraffin-embedded Human lung cancer tissue using TA323306 (SERPINA3 Antibody) at dilution 1/35, treated with fusion protein. (Original magnification:  $\times 200$ )