

## Product datasheet for **TA323301S**

### NeuN (RBFOX3) Rabbit Polyclonal Antibody

#### Product data:

Product Type:	Primary Antibodies
Applications:	IHC, WB
Recommended Dilution:	WB: 500-2000 WB positive control: Mouse brain tissue lysate IHC: 100-300 Positive control: Human tonsil Predicted cell location: Nucleus and Cytoplasm
Reactivity:	Human, Mouse
Host:	Rabbit
Isotype:	IgG
Clonality:	Polyclonal
Immunogen:	Synthetic peptide corresponding to a region derived from 88-102 amino acids of RNA binding protein, fox-1 homolog (C. elegans) 3
Formulation:	PBS pH7.3, 0.05% NaN <sub>3</sub> , 50% glycerol
Purification:	Antigen affinity purification
Conjugation:	Unconjugated
Storage:	Store at -20°C as received.
Stability:	Stable for 12 months from date of receipt.
Gene Name:	RNA binding protein, fox-1 homolog 3
Database Link:	<a href="#">NP_001020619</a> <a href="#">Entrez Gene 52897 Mouse</a> <a href="#">Entrez Gene 146713 Human</a> <a href="#">A6NFN3</a>



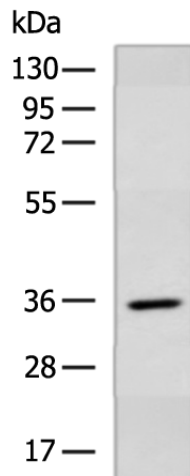
[View online »](#)

**Background:**

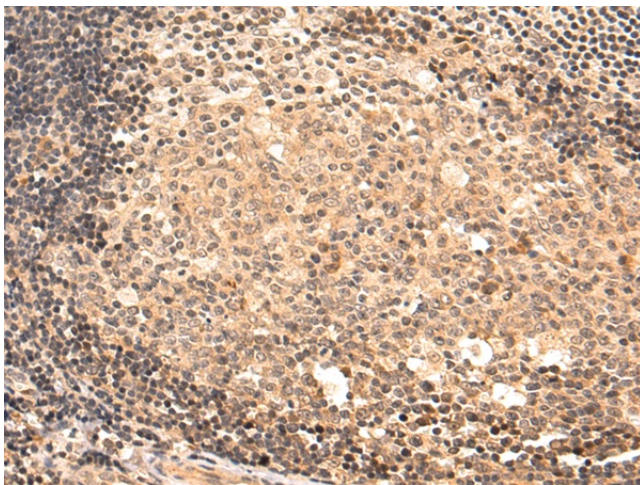
Immunoprecipitation and mass spectrometry of the two major NeuN species at 45–50 kDa identified both as the RNA binding protein Rbfox3 (a member of the Fox family of alternative splicing factors); confirming and extending the identification of the 45 kDa band as Rbfox3. Mapping of the anti-NeuN reactive epitopes in both R3hdm2 and Rbfox3 reveals a common proline- and glutamine-rich domain that lies at the N-terminus of the Rbfox3 protein. Nuclear Rbfox3 isoforms can also enhance the inclusion of cryptic exons in the Rbfox2 mRNA; resulting in nonsense-mediated decay of the message; thereby contributing to the negative regulation of Rbfox2 by Rbfox3 through a novel mechanism.

**Synonyms:**

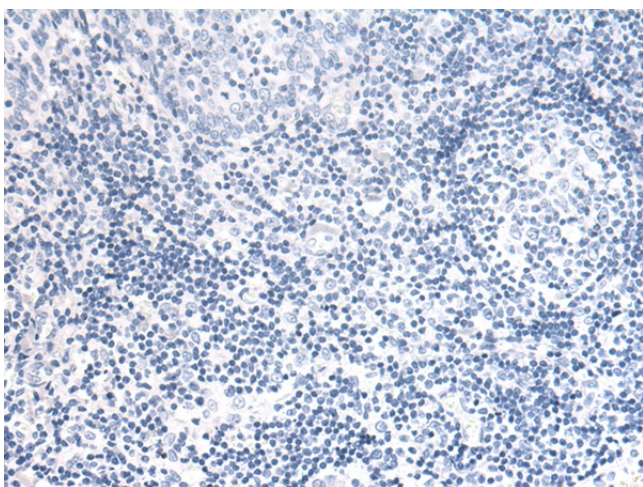
Fox-3; Hrnbp3; NeuN; Neun; Neuna60; RGD1560070

**Product images:**


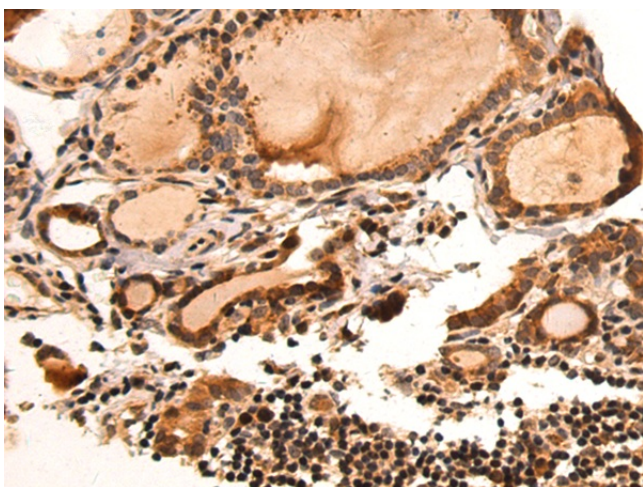
Gel: 8%SDS-PAGE  
 Lysate: 40 µg  
 Lane: Mouse brain tissue lysate  
 Primary antibody: [TA323301] (RBFOX3 Antibody) at dilution 1/600  
 Secondary antibody: Goat anti rabbit IgG at 1/5000 dilution  
 Exposure time: 2 minutes



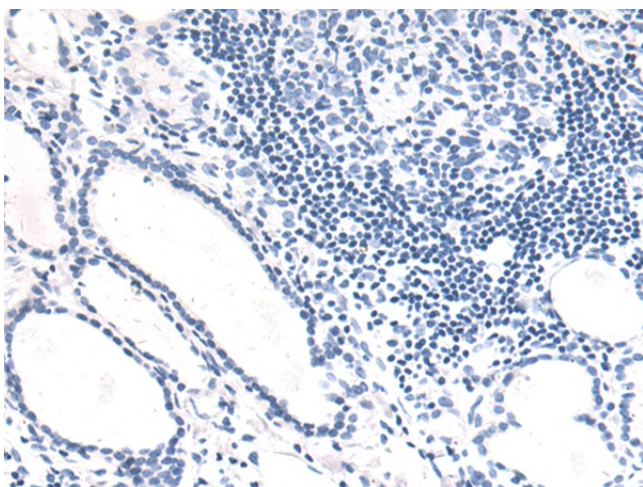
Immunohistochemistry of paraffin-embedded Human tonsil tissue using [TA323301] (RBFOX3 Antibody) at dilution 1/50 (Original magnification: ×200)



Immunohistochemistry of paraffin-embedded Human tonsil tissue using [TA323301] (RBFox3 Antibody) at dilution 1/50, treated with synthetic peptide. (Original magnification:  $\times 200$ )



Immunohistochemistry of paraffin-embedded Human thyroid cancer tissue using [TA323301] (RBFox3 Antibody) at dilution 1/50 (Original magnification:  $\times 200$ )



Immunohistochemistry of paraffin-embedded Human thyroid cancer tissue using [TA323301] (RBFox3 Antibody) at dilution 1/50, treated with synthetic peptide. (Original magnification:  $\times 200$ )