

Product datasheet for **TA323300S**

NeuN (RBFox3) Rabbit Polyclonal Antibody

Product data:

| | |
|-------------------------|---|
| Product Type: | Primary Antibodies |
| Applications: | IHC, WB |
| Recommended Dilution: | WB: 500-2000 WB positive control: Mouse brain tissue lysate IHC: 50-200 Positive control: Human thyroid cancer Predicted cell location: Cytoplasm and Nucleus |
| Reactivity: | Human, Mouse |
| Host: | Rabbit |
| Isotype: | IgG |
| Clonality: | Polyclonal |
| Immunogen: | Synthetic peptide corresponding to a region derived from 88-102 amino acids of RNA binding protein, fox-1 homolog (C. elegans) 3 |
| Formulation: | PBS pH7.3, 0.05% NaN ₃ , 50% glycerol |
| Purification: | Antigen affinity purification |
| Conjugation: | Unconjugated |
| Storage: | Store at -20°C as received. |
| Stability: | Stable for 12 months from date of receipt. |
| Predicted Protein Size: | 34 kDa |
| Gene Name: | RNA binding protein, fox-1 homolog 3 |
| Database Link: | NP_001076044 Entrez Gene 52897 Mouse Entrez Gene 146713 Human A6NFN3 |



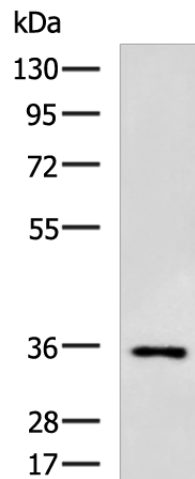
[View online »](#)

Background:

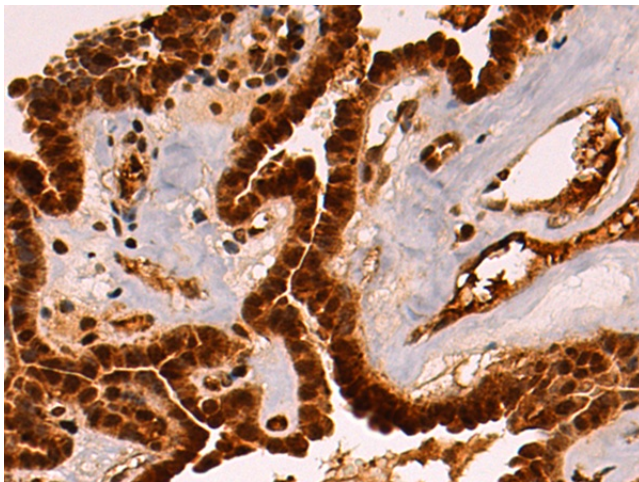
Immunoprecipitation and mass spectrometry of the two major NeuN species at 45–50 kDa identified both as the RNA binding protein Rbfox3 (a member of the Fox family of alternative splicing factors); confirming and extending the identification of the 45 kDa band as Rbfox3. Mapping of the anti-NeuN reactive epitopes in both R3hdm2 and Rbfox3 reveals a common proline- and glutamine-rich domain that lies at the N-terminus of the Rbfox3 protein. Nuclear Rbfox3 isoforms can also enhance the inclusion of cryptic exons in the Rbfox2 mRNA; resulting in nonsense-mediated decay of the message; thereby contributing to the negative regulation of Rbfox2 by Rbfox3 through a novel mechanism.

Synonyms:

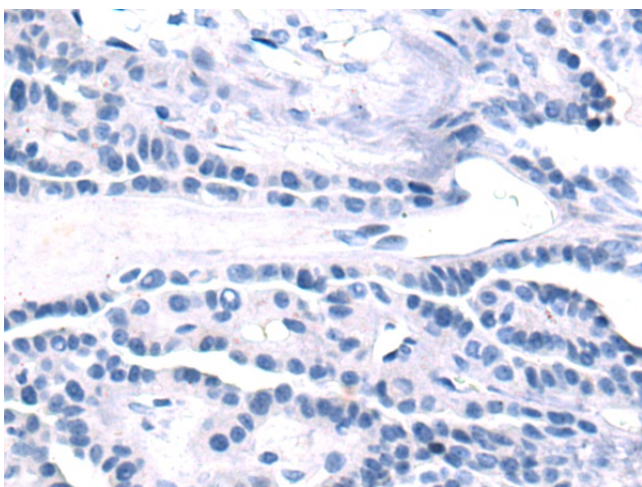
FOX-3; FOX3; HRNBP3; NEUN

Product images:

Gel: 8%SDS-PAGE
Lysate: 40 μ g
Lane: Mouse brain tissue lysate
Primary antibody: [TA323300] (RBFOX3 Antibody) at dilution 1/550
Secondary antibody: Goat anti rabbit IgG at 1/5000 dilution
Exposure time: 90 seconds



Immunohistochemistry of paraffin-embedded Human thyroid cancer tissue using [TA323300] (RBFOX3 Antibody) at dilution 1/45 (Original magnification: \times 200)



Immunohistochemistry of paraffin-embedded Human thyroid cancer tissue using [TA323300] (RBFox3 Antibody) at dilution 1/45, treated with synthetic peptide. (Original magnification: $\times 200$)