

Product datasheet for **TA323298**

LILRB3 Rabbit Polyclonal Antibody

Product data:

Product Type:	Primary Antibodies
Applications:	IHC
Recommended Dilution:	IHC: 15-50 Positive control: Human breast cancer Predicted cell location: Cytoplasm, Cell membrane
Reactivity:	Human
Host:	Rabbit
Isotype:	IgG
Clonality:	Polyclonal
Immunogen:	Synthetic peptide peptide corresponding to a region derived from 560-572 amino acids of human leukocyte immunoglobulin-like receptor, subfamily B (with TM and ITIM domains), member 3
Formulation:	PBS pH7.3, 0.05% NaN ₃ , 50% glycerol
Concentration:	lot specific
Purification:	Antigen affinity purification
Conjugation:	Unconjugated
Storage:	Store at -20°C as received.
Stability:	Stable for 12 months from date of receipt.
Gene Name:	leukocyte immunoglobulin like receptor B3
Database Link:	NP_006855 Entrez Gene 11025 Human O75022



[View online »](#)

Background:

This gene is a member of the leukocyte immunoglobulin-like receptor (LIR) family; which is found in a gene cluster at chromosomal region 19q13.4. The encoded protein belongs to the subfamily B class of LIR receptors which contain two or four extracellular immunoglobulin domains; a transmembrane domain; and two to four cytoplasmic immunoreceptor tyrosine-based inhibitory motifs (ITIMs). The receptor is expressed on immune cells where it binds to MHC class I molecules on antigen-presenting cells and transduces a negative signal that inhibits stimulation of an immune response. It is thought to control inflammatory responses and cytotoxicity to help focus the immune response and limit autoreactivity. Multiple transcript variants encoding different isoforms have been found for this gene.

Synonyms:

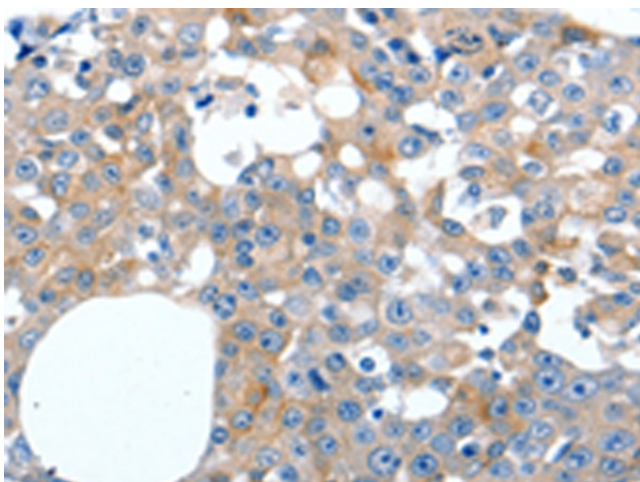
CD85A; HL9; ILT-5; ILT5; LILRA6; LIR-3; LIR3; PIRB

Protein Families:

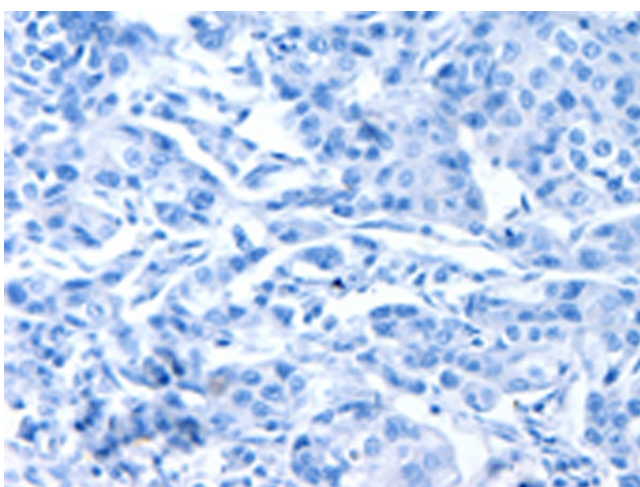
Druggable Genome, Transmembrane

Protein Pathways:

B cell receptor signaling pathway

Product images:

Immunohistochemistry of paraffin-embedded Human breast cancer tissue using TA323298 (LILRB3 Antibody) at dilution 1/20 (Original magnification: $\times 200$)



Immunohistochemistry of paraffin-embedded Human breast cancer tissue using TA323298 (LILRB3 Antibody) at dilution 1/20, treated with synthetic peptide. (Original magnification: $\times 200$)