

Product datasheet for **TA323295**

ABHD12 Rabbit Polyclonal Antibody

Product data:

Product Type:	Primary Antibodies
Applications:	IHC
Recommended Dilution:	IHC: 25-100 Positive control: Human thyroid cancer Predicted cell location: Cytoplasm
Reactivity:	Human, Mouse, Rat
Host:	Rabbit
Isotype:	IgG
Clonality:	Polyclonal
Immunogen:	Fusion protein corresponding to a region derived from 96-398 amino acids of human abhydrolase domain containing 12
Formulation:	PBS pH7.3, 0.05% NaN ₃ , 50% glycerol
Concentration:	lot specific
Purification:	Antigen affinity purification
Conjugation:	Unconjugated
Storage:	Store at -20°C as received.
Stability:	Stable for 12 months from date of receipt.
Gene Name:	abhydrolase domain containing 12
Database Link:	NP_056415 Entrez Gene 76192 Mouse Entrez Gene 499913 Rat Entrez Gene 26090 Human Q8N2K0



[View online »](#)

Background:

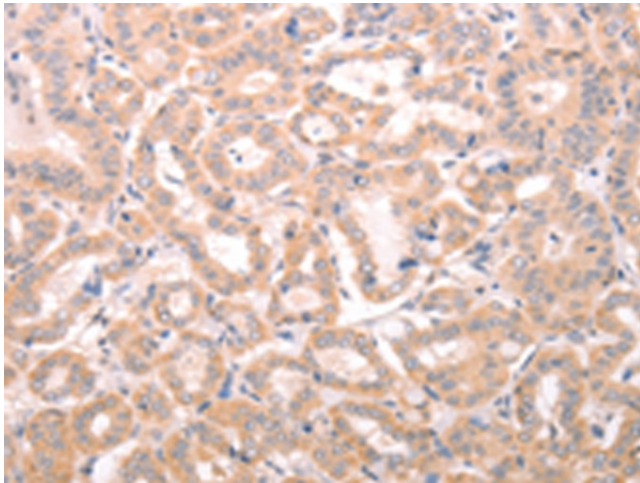
This gene encodes an enzyme that catalyzes the hydrolysis of 2-arachidonoyl glycerol (2-AG); the main endocannabinoid lipid transmitter that acts on cannabinoid receptors; CB1 and CB2. The endocannabinoid system is involved in a wide range of physiological processes; including neurotransmission; mood; appetite; pain appreciation; addiction behavior; and inflammation. Mutations in this gene are associated with the neurodegenerative disease; PHARC (polyneuropathy; hearing loss; ataxia; retinitis pigmentosa; and cataract); resulting from an inborn error of endocannabinoid metabolism. Alternatively spliced transcript variants encoding different isoforms have been noted for this gene.

Synonyms:

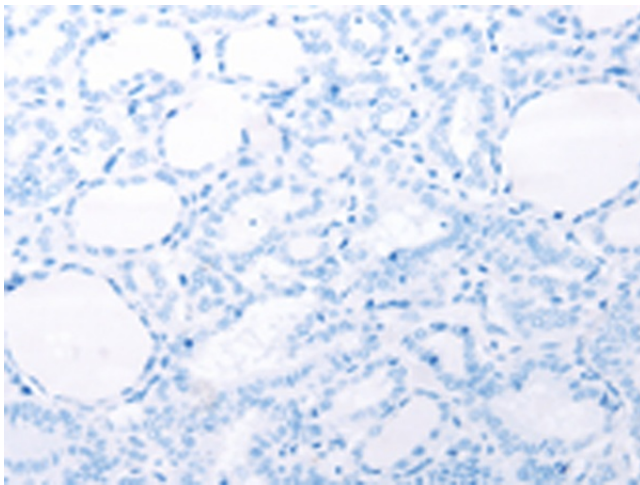
ABHD12A; BEM46L2; C20orf22; dj965G21.2; PHARC

Protein Families:

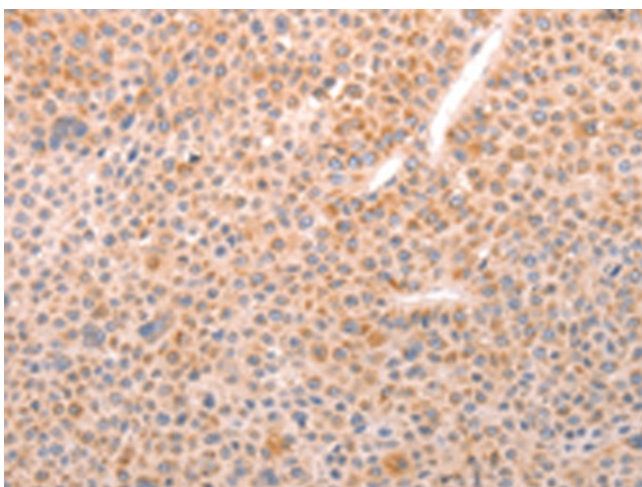
Protease, Transmembrane

Product images:

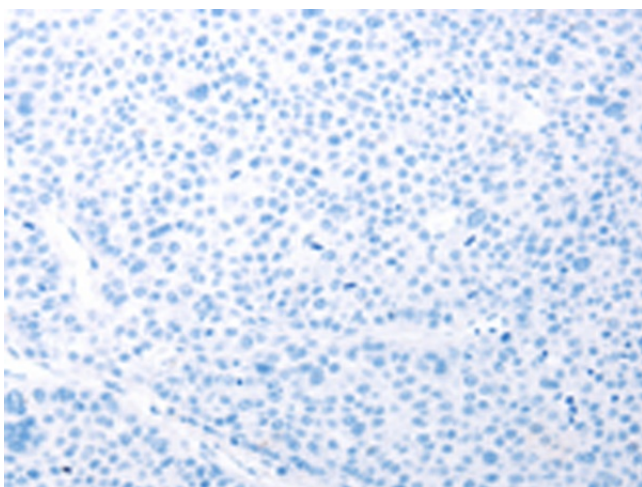
Immunohistochemistry of paraffin-embedded Human thyroid cancer tissue using TA323295 (ABHD12 Antibody) at dilution 1/25 (Original magnification: $\times 200$)



Immunohistochemistry of paraffin-embedded Human thyroid cancer tissue using TA323295 (ABHD12 Antibody) at dilution 1/25, treated with fusion protein. (Original magnification: $\times 200$)



Immunohistochemistry of paraffin-embedded Human liver cancer tissue using TA323295 (ABHD12 Antibody) at dilution 1/25 (Original magnification: $\times 200$)



Immunohistochemistry of paraffin-embedded Human liver cancer tissue using TA323295 (ABHD12 Antibody) at dilution 1/25, treated with fusion protein. (Original magnification: $\times 200$)