

## Product datasheet for **TA323293S**

### GLUT4 (SLC2A4) Rabbit Polyclonal Antibody

#### Product data:

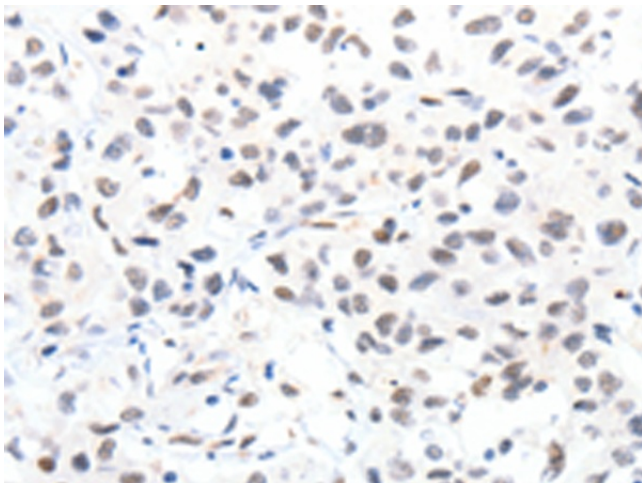
Product Type:	Primary Antibodies
Applications:	IHC
Recommended Dilution:	IHC: 10-50 Positive control: Human lung cancer Predicted cell location: Cytoplasm, Nucleus
Reactivity:	Human, Mouse, Rat
Host:	Rabbit
Isotype:	IgG
Clonality:	Polyclonal
Immunogen:	Synthetic peptide peptide corresponding to a region derived from 496-509 amino acids of human solute carrier family 2 (facilitated glucose transporter), member 4
Formulation:	PBS pH7.3, 0.05% NaN <sub>3</sub> , 50% glycerol
Purification:	Antigen affinity purification
Conjugation:	Unconjugated
Storage:	Store at -20°C as received.
Stability:	Stable for 12 months from date of receipt.
Gene Name:	solute carrier family 2 member 4
Database Link:	<a href="#">NP_001033</a> <a href="#">Entrez Gene 20528 Mouse</a> <a href="#">Entrez Gene 25139 Rat</a> <a href="#">Entrez Gene 6517 Human P14672</a>
Background:	This gene is a member of the solute carrier family 2 (facilitated glucose transporter) family and encodes a protein that functions as an insulin-regulated facilitative glucose transporter. In the absence of insulin; this integral membrane protein is sequestered within the cells of muscle and adipose tissue. Within minutes of insulin stimulation; the protein moves to the cell surface and begins to transport glucose across the cell membrane. Mutations in this gene have been associated with noninsulin-dependent diabetes mellitus (NIDDM).
Synonyms:	GLUT4
Protein Families:	Druggable Genome, Transmembrane



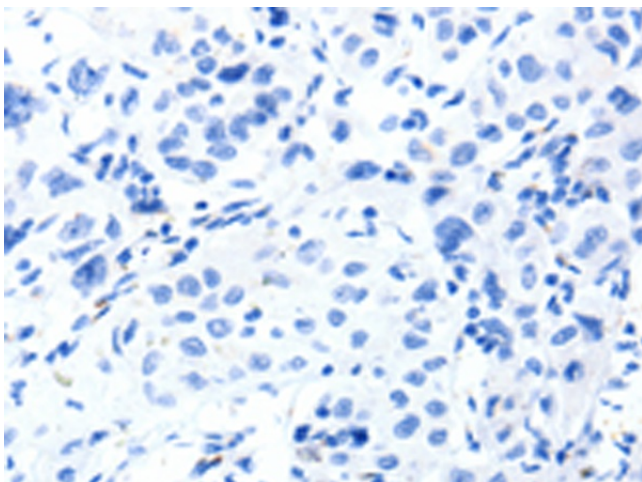
[View online »](#)

Protein Pathways: Adipocytokine signaling pathway, Insulin signaling pathway, Type II diabetes mellitus

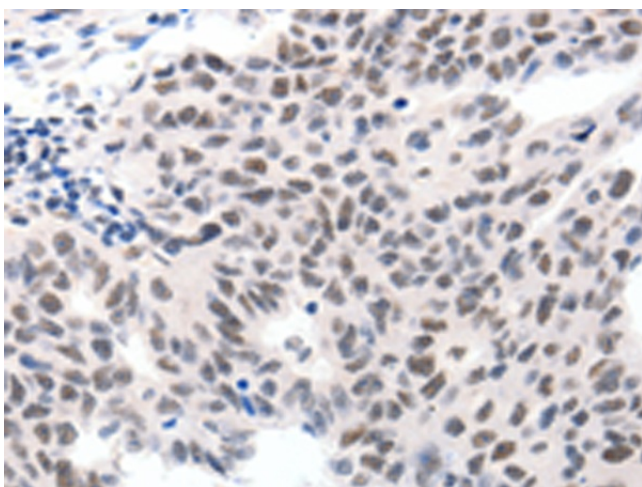
### Product images:



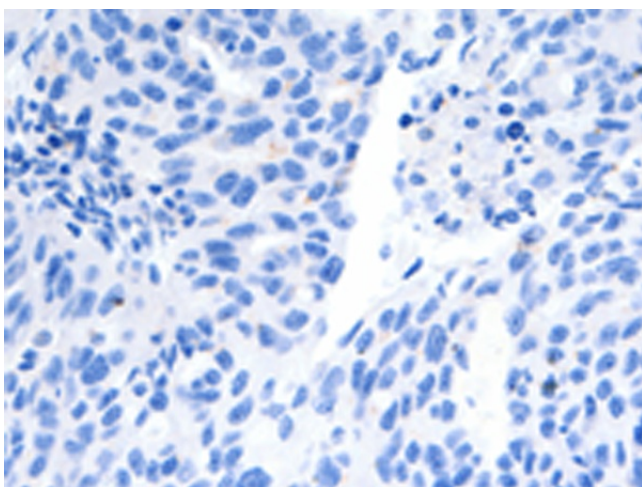
Immunohistochemistry of paraffin-embedded Human lung cancer tissue using [TA323293] (SLC2A4 Antibody) at dilution 1/15 (Original magnification:  $\times 200$ )



Immunohistochemistry of paraffin-embedded Human lung cancer tissue using [TA323293] (SLC2A4 Antibody) at dilution 1/15, treated with synthetic peptide. (Original magnification:  $\times 200$ )



Immunohistochemistry of paraffin-embedded Human ovarian cancer tissue using [TA323293] (SLC2A4 Antibody) at dilution 1/15 (Original magnification: x200)



Immunohistochemistry of paraffin-embedded Human ovarian cancer tissue using [TA323293] (SLC2A4 Antibody) at dilution 1/15, treated with synthetic peptide. (Original magnification: x200)