

Product datasheet for **TA323291S**

ABCE1 Rabbit Polyclonal Antibody

Product data:

Product Type:	Primary Antibodies
Applications:	WB
Recommended Dilution:	WB: 500-2000 WB positive control: NIH/3T3 cells and human ovarian cancer tissue
Reactivity:	Human, Mouse
Host:	Rabbit
Isotype:	IgG
Clonality:	Polyclonal
Immunogen:	Fusion protein corresponding to a region derived from 345-562 amino acids of human ATP-binding cassette, sub-family E (OABP), member 1
Formulation:	PBS pH7.3, 0.05% NaN ₃ , 50% glycerol
Purification:	Antigen affinity purification
Conjugation:	Unconjugated
Storage:	Store at -20°C as received.
Stability:	Stable for 12 months from date of receipt.
Predicted Protein Size:	67 kDa
Gene Name:	ATP binding cassette subfamily E member 1
Database Link:	NP_001035809 Entrez Gene 24015 Mouse Entrez Gene 6059 Human P61221
Background:	The protein encoded by this gene is a member of the superfamily of ATP-binding cassette (ABC) transporters. ABC proteins transport various molecules across extra- and intra-cellular membranes. ABC genes are divided into seven distinct subfamilies (ABC1; MDR/TAP; MRP; ALD; OABP; GCN20; White). This protein is a member of the OABP subfamily. Alternatively referred to as the RNase L inhibitor; this protein functions to block the activity of ribonuclease L. Activation of ribonuclease L leads to inhibition of protein synthesis in the 2-5A/RNase L system; the central pathway for viral interferon action. Two transcript variants encoding the same protein have been found for this gene.

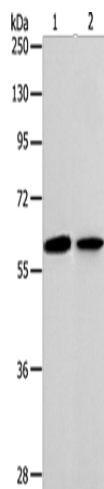


[View online »](#)

Synonyms: ABC38; OABP; RLI; RNASEL1; RNASELI; RNS4I

Protein Families: Druggable Genome

Product images:



Gel: 10%SDS-PAGE

Lysate: 40 μ g

Lane 1-2: NIH/3T3 cells

human ovarian cancer tissue

Primary antibody: [TA323291] (ABCE1 Antibody)
at dilution 1/300

Secondary antibody: Goat anti rabbit IgG at
1/8000 dilution

Exposure time: 1 minute