

## Product datasheet for **TA323285**

### Somatostatin Receptor 1 (SSTR1) Rabbit Polyclonal Antibody

#### Product data:

Product Type:	Primary Antibodies
Applications:	IHC, WB
Recommended Dilution:	WB: 500-2000 WB positive control: 293T and hela cells IHC: 50-200 Positive control: Human liver cancer Predicted cell location: Cytoplasm
Reactivity:	Human, Mouse, Rat
Host:	Rabbit
Isotype:	IgG
Clonality:	Polyclonal
Immunogen:	Synthetic peptide corresponding to a region derived from 370-384 amino acids of human somatostatin receptor 1
Formulation:	PBS pH7.3, 0.05% NaN <sub>3</sub> , 50% glycerol
Concentration:	lot specific
Purification:	Antigen affinity purification
Conjugation:	Unconjugated
Storage:	Store at -20°C as received.
Stability:	Stable for 12 months from date of receipt.
Predicted Protein Size:	43 kDa
Gene Name:	somatostatin receptor 1
Database Link:	<a href="#">NP_001040</a> <a href="#">Entrez Gene 20605 Mouse</a> <a href="#">Entrez Gene 25033 Rat</a> <a href="#">Entrez Gene 6751 Human</a> <a href="#">P30872</a>



[View online »](#)

**Background:**

Somatostatins are peptide hormones that regulate diverse cellular functions such as neurotransmission; cell proliferation; and endocrine signaling as well as inhibiting the release of many hormones and other secretory proteins. Somatostatin has two active forms of 14 and 28 amino acids. The biological effects of somatostatins are mediated by a family of G-protein coupled somatostatin receptors that are expressed in a tissue-specific manner. The protein encoded by this gene is a member of the superfamily of somatostatin receptors having seven transmembrane segments. Somatostatin receptors form homodimers and heterodimers with other members of the superfamily as well as with other G-protein coupled receptors and receptor tyrosine kinases. This somatostatin receptor has greater affinity for somatostatin-14 than -28.

**Synonyms:**

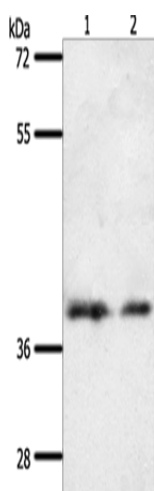
SRIF-2; SS-1-R; SS1-R; SS1R

**Protein Families:**

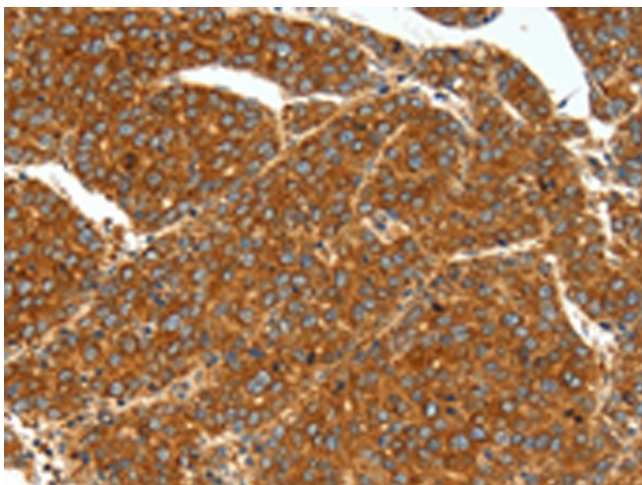
Druggable Genome, GPCR, Transmembrane

**Protein Pathways:**

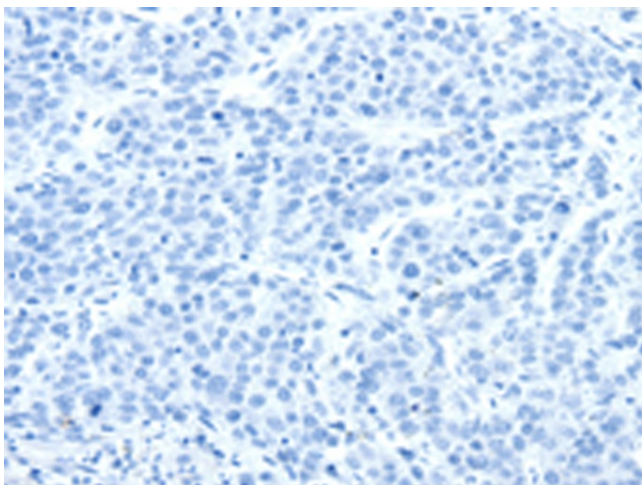
Neuroactive ligand-receptor interaction

**Product images:**

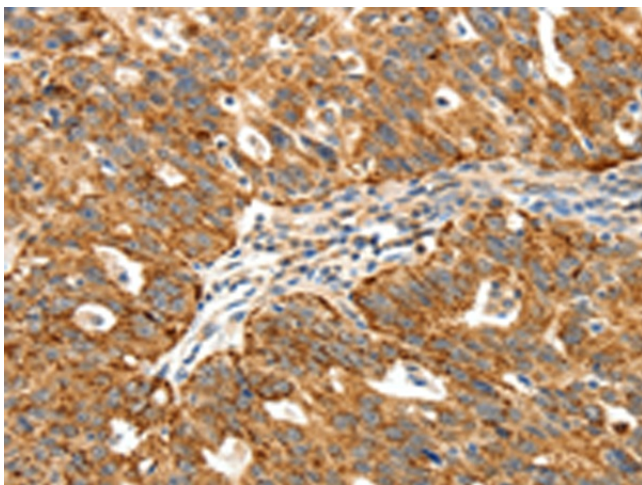
Gel: 10%SDS-PAGE  
Lysate: 60 µg  
Lane 1-2: 293T cells  
hela cells  
Primary antibody: TA323285 (SSTR1 Antibody) at  
dilution 1/500  
Secondary antibody: Goat anti rabbit IgG at  
1/8000 dilution  
Exposure time: 30 seconds



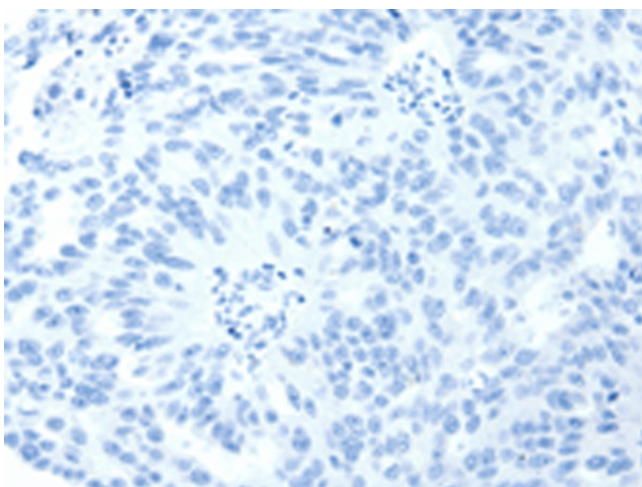
Immunohistochemistry of paraffin-embedded Human liver cancer tissue using TA323285 (SSTR1 Antibody) at dilution 1/40 (Original magnification:  $\times 200$ )



Immunohistochemistry of paraffin-embedded Human liver cancer tissue using TA323285 (SSTR1 Antibody) at dilution 1/40, treated with synthetic peptide. (Original magnification:  $\times 200$ )



Immunohistochemistry of paraffin-embedded Human ovarian cancer tissue using TA323285 (SSTR1 Antibody) at dilution 1/40 (Original magnification:  $\times 200$ )



Immunohistochemistry of paraffin-embedded Human ovarian cancer tissue using TA323285 (SSTR1 Antibody) at dilution 1/40, treated with synthetic peptide. (Original magnification: ×200)