

Product datasheet for **TA323282**

MYH (MUTYH) Rabbit Polyclonal Antibody

Product data:

| | |
|-------------------------|--|
| Product Type: | Primary Antibodies |
| Applications: | IHC, WB |
| Recommended Dilution: | WB: 1000-5000 WB positive control: Human liver cancer and stomach cancer tissue IHC: 50-200 Positive control: Human lung cancer Predicted cell location: Nucleus |
| Reactivity: | Human |
| Host: | Rabbit |
| Isotype: | IgG |
| Clonality: | Polyclonal |
| Immunogen: | Fusion protein corresponding to a C terminal 300 amino acids of human mutY homolog (E. coli) |
| Formulation: | PBS pH7.3, 0.05% NaN ₃ , 50% glycerol |
| Concentration: | lot specific |
| Purification: | Antigen affinity purification |
| Conjugation: | Unconjugated |
| Storage: | Store at -20°C as received. |
| Stability: | Stable for 12 months from date of receipt. |
| Predicted Protein Size: | 60 kDa |
| Gene Name: | mutY DNA glycosylase |
| Database Link: | NP_001041636 Entrez Gene 4595 Human Q9UIF7 |



[View online »](#)

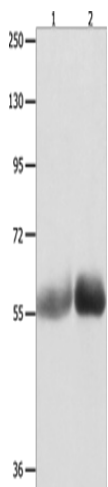
Background: This gene encodes a DNA glycosylase involved in oxidative DNA damage repair. The enzyme excises adenine bases from the DNA backbone at sites where adenine is inappropriately paired with guanine; cytosine; or 8-oxo-7;8-dihydroguanine; a major oxidatively damaged DNA lesion. The protein is localized to the nucleus and mitochondria. Mutations in this gene result in heritable predisposition to colon and stomach cancer. Multiple transcript variants encoding different isoforms have been found for this gene.

Synonyms: MYH

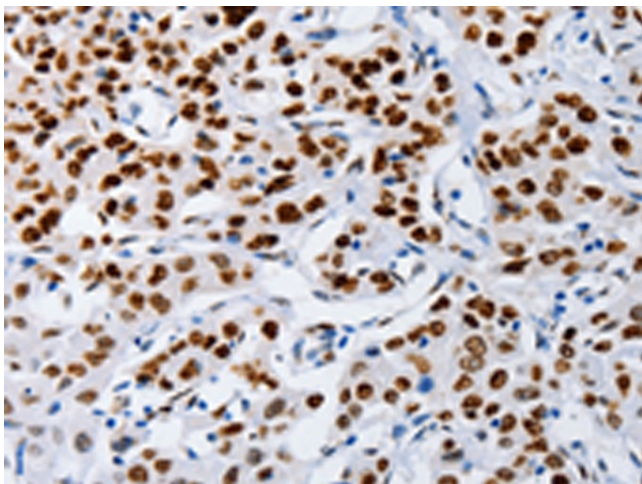
Protein Families: Druggable Genome, Stem cell - Pluripotency

Protein Pathways: Base excision repair

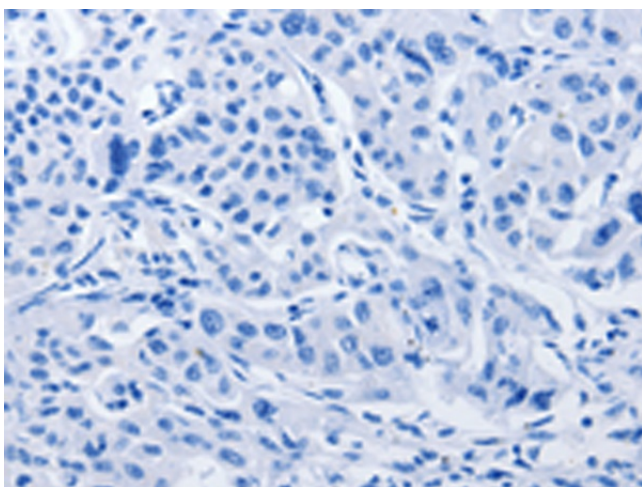
Product images:



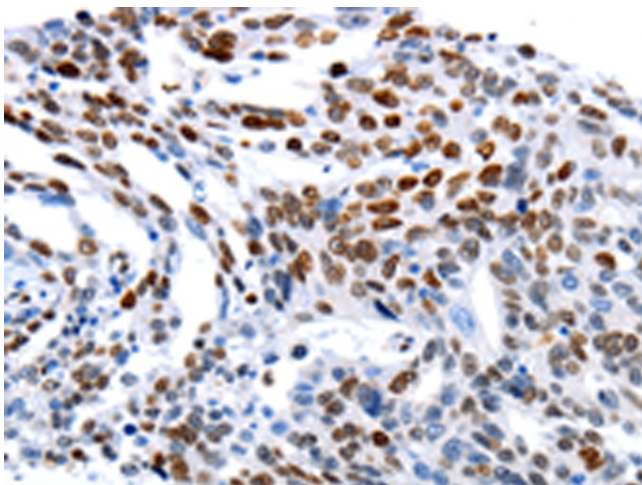
Gel: 8%SDS-PAGE
Lysate: 40 µg
Lane 1-2: Human liver cancer tissue
Human stomach cancer tissue
Primary antibody: TA323282 (MUTYH Antibody) at dilution 1/1000
Secondary antibody: Goat anti rabbit IgG at 1/8000 dilution
Exposure time: 1 minute



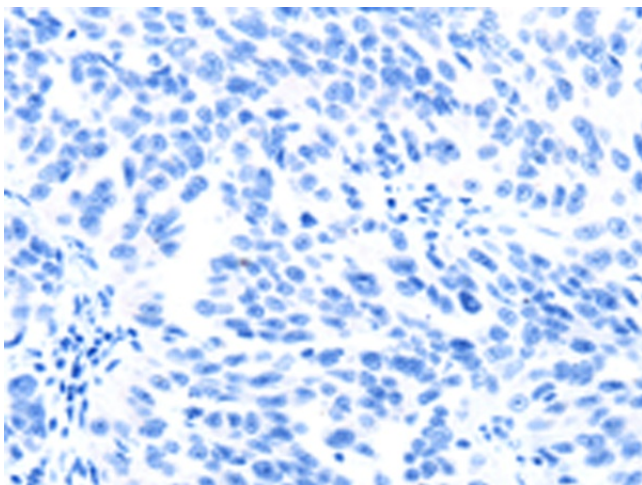
Immunohistochemistry of paraffin-embedded Human lung cancer tissue using TA323282 (MUTYH Antibody) at dilution 1/60 (Original magnification: ×200)



Immunohistochemistry of paraffin-embedded Human lung cancer tissue using TA323282 (MUTYH Antibody) at dilution 1/60, treated with fusion protein. (Original magnification: $\times 200$)



Immunohistochemistry of paraffin-embedded Human ovarian cancer tissue using TA323282 (MUTYH Antibody) at dilution 1/60 (Original magnification: $\times 200$)



Immunohistochemistry of paraffin-embedded Human ovarian cancer tissue using TA323282 (MUTYH Antibody) at dilution 1/60, treated with fusion protein. (Original magnification: $\times 200$)