

Product datasheet for **TA323281**

NET1 Rabbit Polyclonal Antibody

Product data:

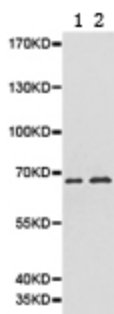
Product Type:	Primary Antibodies
Applications:	WB
Recommended Dilution:	WB: 1:500-2000
Reactivity:	Human, Mouse, Rat
Host:	Rabbit
Isotype:	IgG
Clonality:	Polyclonal
Immunogen:	Fusion protein corresponding to N terminal 300 amino acids of human neuroepithelial cell transforming 1
Formulation:	PBS pH7.3, 0.05% NaN ₃ , 50% glycerol
Concentration:	lot specific
Purification:	Antigen affinity purification
Conjugation:	Unconjugated
Storage:	Store at -20°C as received.
Stability:	Stable for 12 months from date of receipt.
Predicted Protein Size:	68 kDa
Gene Name:	neuroepithelial cell transforming 1
Database Link:	NP_001040625 Entrez Gene 56349 MouseEntrez Gene 307098 RatEntrez Gene 10276 Human Q7Z628
Background:	This gene is part of the family of Rho guanine nucleotide exchange factors. Members of this family activate Rho proteins by catalyzing the exchange of GDP for GTP. The protein encoded by this gene interacts with RhoA within the cell nucleus and may play a role in repairing DNA damage after ionizing radiation. Pseudogenes of this gene are located on the long arms of chromosomes 1, 7 and 18. Alternative splicing results in multiple transcript variants that encode different protein isoforms.
Synonyms:	ARHGEF8; NET1A



[View online »](#)

Protein Families: Druggable Genome

Product images:



Predicted band size: 68 kDa. Positive control: Jurkat and 293T cell lysate. Recommended dilution: 1/500-2000. (Gel: 8%SDS-PAGE Lane 1: Jurkat cell lysate Lane 2: 293T cell lysate Lysates: 40 ug per lane Primary antibody: 1/500 dilution Secondary antibody: Goat anti Rabbit IgG - H&L (HRP) at 1/10000 dilution Exposure time: 1 minute)