

## Product datasheet for **TA323280S**

### Neurokinin A Receptor (TACR2) Rabbit Polyclonal Antibody

#### Product data:

Product Type:	Primary Antibodies
Applications:	IHC, WB
Recommended Dilution:	WB: 200-1000 WB positive control: Human liver cancer tissue IHC: 10-50 Positive control: Human ovarian cancer Predicted cell location: Cytoplasm
Reactivity:	Human
Host:	Rabbit
Isotype:	IgG
Clonality:	Polyclonal
Immunogen:	Synthetic peptide peptide corresponding to a region derived from 3-18 amino acids of human tachykinin receptor 2
Formulation:	PBS pH7.3, 0.05% NaN <sub>3</sub> , 50% glycerol
Purification:	Antigen affinity purification
Conjugation:	Unconjugated
Storage:	Store at -20°C as received.
Stability:	Stable for 12 months from date of receipt.
Predicted Protein Size:	44 kDa
Gene Name:	tachykinin receptor 2
Database Link:	<a href="#">NP_001048</a> <a href="#">Entrez Gene 6865 Human P21452</a>
Background:	This gene belongs to a family of genes that function as receptors for tachykinins. Receptor affinities are specified by variations in the 5'-end of the sequence. The receptors belonging to this family are characterized by interactions with G proteins and 7 hydrophobic transmembrane regions. This gene encodes the receptor for the tachykinin neuropeptide substance K; also referred to as neurokinin A.



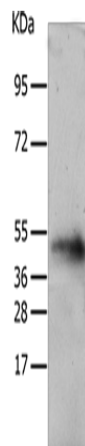
[View online »](#)

**Synonyms:** NK2R; NKNAR; SKR; TAC2R

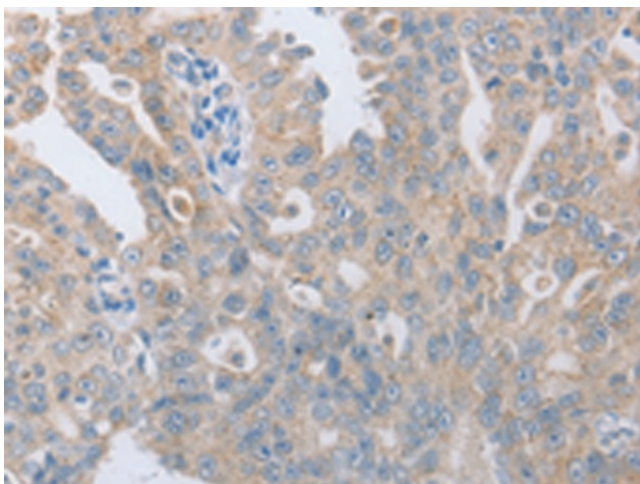
**Protein Families:** Druggable Genome, GPCR, Transmembrane

**Protein Pathways:** Calcium signaling pathway, Neuroactive ligand-receptor interaction

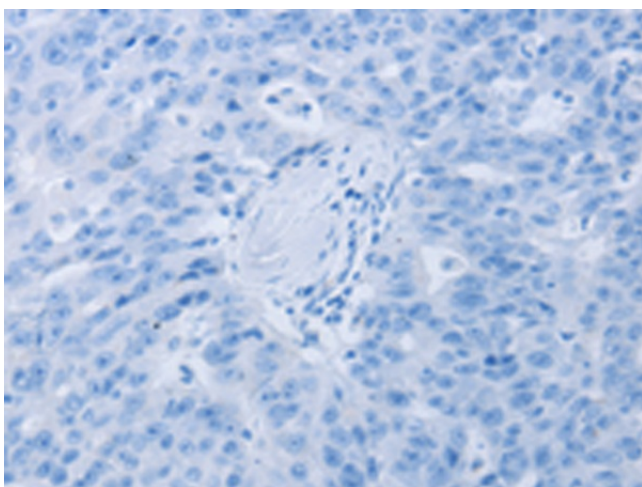
**Product images:**



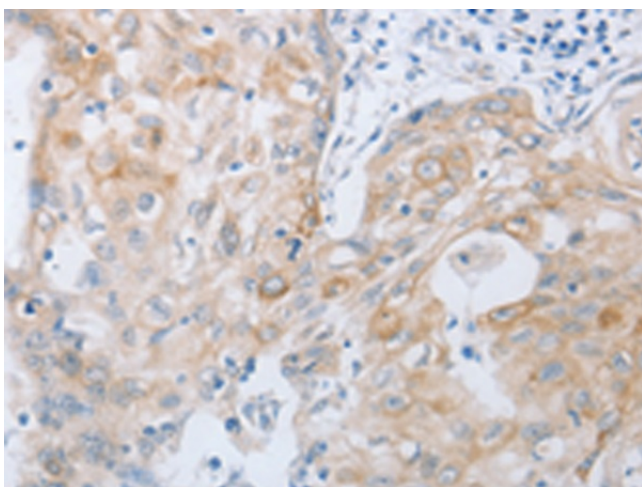
Gel: 10%SDS-PAGE  
Lysate: 40  $\mu$ g  
Lane: Human liver cancer tissue  
Primary antibody: [TA323280] (TACR2 Antibody) at dilution 1/200  
Secondary antibody: Goat anti rabbit IgG at 1/8000 dilution  
Exposure time: 2 minutes



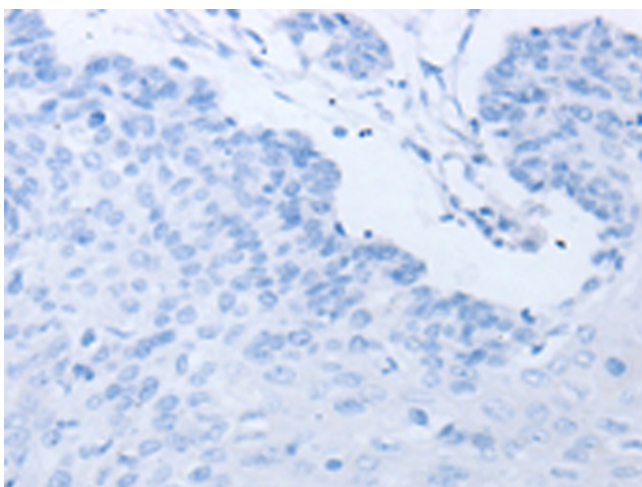
Immunohistochemistry of paraffin-embedded Human ovarian cancer tissue using [TA323280] (TACR2 Antibody) at dilution 1/10 (Original magnification:  $\times$ 200)



Immunohistochemistry of paraffin-embedded Human ovarian cancer tissue using [TA323280] (TACR2 Antibody) at dilution 1/10, treated with synthetic peptide. (Original magnification: ×200)



Immunohistochemistry of paraffin-embedded Human cervical cancer tissue using [TA323280] (TACR2 Antibody) at dilution 1/10 (Original magnification: ×200)



Immunohistochemistry of paraffin-embedded Human cervical cancer tissue using [TA323280] (TACR2 Antibody) at dilution 1/10, treated with synthetic peptide. (Original magnification: ×200)