

Product datasheet for **TA323280**

Neurokinin A Receptor (TACR2) Rabbit Polyclonal Antibody

Product data:

| | |
|-------------------------|--|
| Product Type: | Primary Antibodies |
| Applications: | IHC, WB |
| Recommended Dilution: | WB: 200-1000 WB positive control: Human liver cancer tissue IHC: 10-50 Positive control: Human ovarian cancer Predicted cell location: Cytoplasm |
| Reactivity: | Human |
| Host: | Rabbit |
| Isotype: | IgG |
| Clonality: | Polyclonal |
| Immunogen: | Synthetic peptide peptide corresponding to a region derived from 3-18 amino acids of human tachykinin receptor 2 |
| Formulation: | PBS pH7.3, 0.05% NaN ₃ , 50% glycerol |
| Concentration: | lot specific |
| Purification: | Antigen affinity purification |
| Conjugation: | Unconjugated |
| Storage: | Store at -20°C as received. |
| Stability: | Stable for 12 months from date of receipt. |
| Predicted Protein Size: | 44 kDa |
| Gene Name: | tachykinin receptor 2 |
| Database Link: | NP_001048 Entrez Gene 6865 Human P21452 |



[View online »](#)

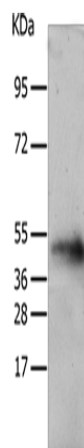
Background: This gene belongs to a family of genes that function as receptors for tachykinins. Receptor affinities are specified by variations in the 5'-end of the sequence. The receptors belonging to this family are characterized by interactions with G proteins and 7 hydrophobic transmembrane regions. This gene encodes the receptor for the tachykinin neuropeptide substance K; also referred to as neurokinin A.

Synonyms: NK2R; NKNAR; SKR; TAC2R

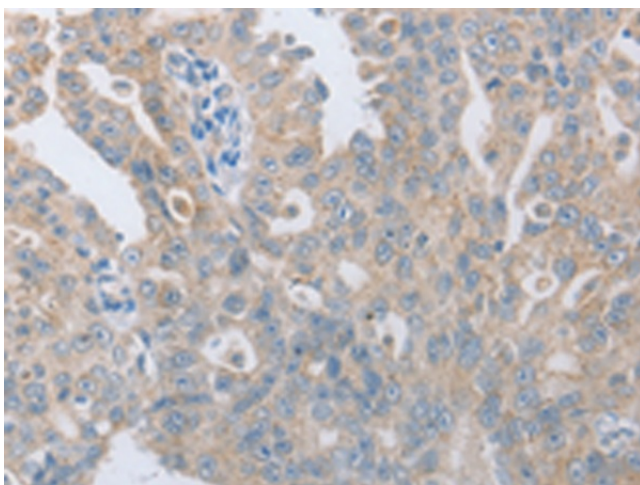
Protein Families: Druggable Genome, GPCR, Transmembrane

Protein Pathways: Calcium signaling pathway, Neuroactive ligand-receptor interaction

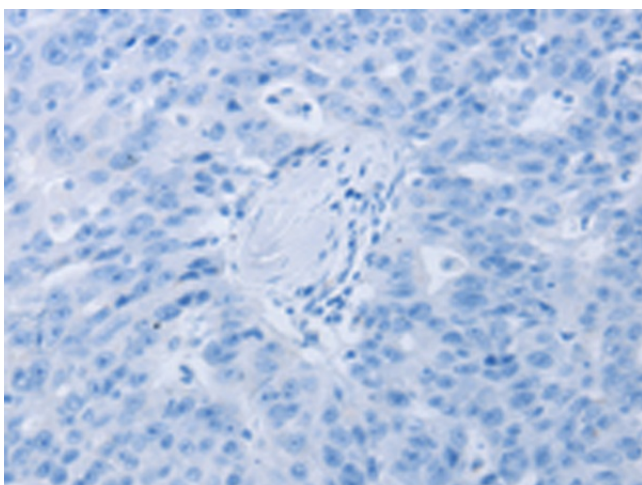
Product images:



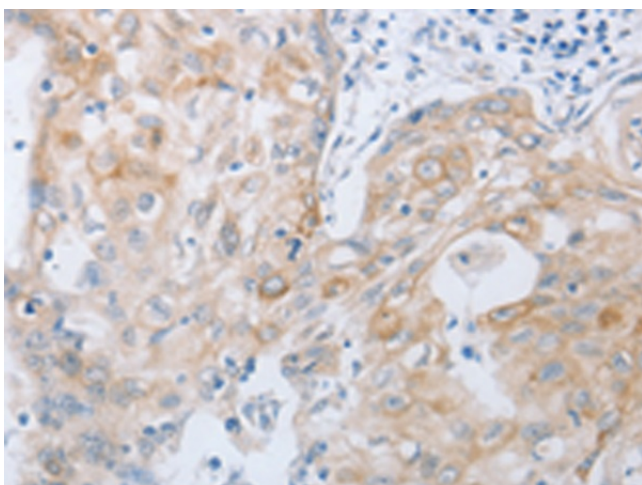
Gel: 10%SDS-PAGE
Lysate: 40 µg
Lane: Human liver cancer tissue
Primary antibody: TA323280 (TACR2 Antibody) at dilution 1/200
Secondary antibody: Goat anti rabbit IgG at 1/8000 dilution
Exposure time: 2 minutes



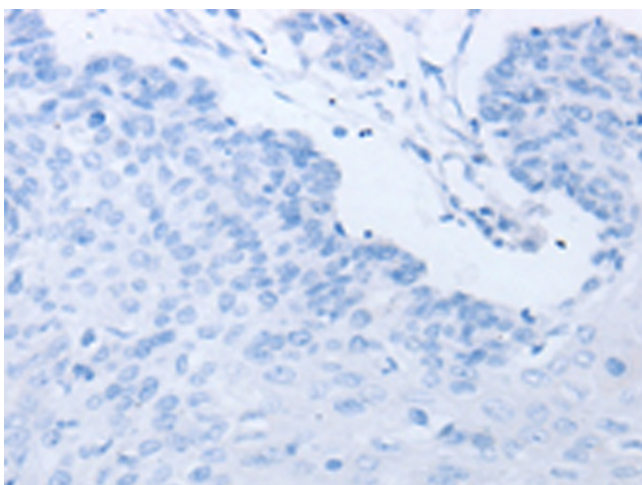
Immunohistochemistry of paraffin-embedded Human ovarian cancer tissue using TA323280 (TACR2 Antibody) at dilution 1/10 (Original magnification: ×200)



Immunohistochemistry of paraffin-embedded Human ovarian cancer tissue using TA323280 (TACR2 Antibody) at dilution 1/10, treated with synthetic peptide. (Original magnification: ×200)



Immunohistochemistry of paraffin-embedded Human cervical cancer tissue using TA323280 (TACR2 Antibody) at dilution 1/10 (Original magnification: ×200)



Immunohistochemistry of paraffin-embedded Human cervical cancer tissue using TA323280 (TACR2 Antibody) at dilution 1/10, treated with synthetic peptide. (Original magnification: ×200)