

## Product datasheet for **TA323278**

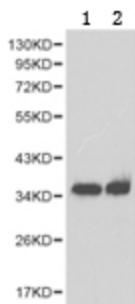
### SULT1A1 Rabbit Polyclonal Antibody

#### Product data:

Product Type:	Primary Antibodies
Applications:	WB
Recommended Dilution:	WB: 1:500-2000
Reactivity:	Human, Mouse, Rat
Host:	Rabbit
Isotype:	IgG
Clonality:	Polyclonal
Immunogen:	Full length fusion protein
Formulation:	PBS pH7.3, 0.05% NaN <sub>3</sub> , 50% glycerol
Concentration:	lot specific
Purification:	Antigen affinity purification
Conjugation:	Unconjugated
Storage:	Store at -20°C as received.
Stability:	Stable for 12 months from date of receipt.
Predicted Protein Size:	34 kDa
Gene Name:	sulfotransferase family 1A member 1
Database Link:	<a href="#">NP_001046</a> <a href="#">Entrez Gene 20887 MouseEntrez Gene 83783 RatEntrez Gene 6817 Human P50225</a>
Background:	SULT1A1, also named as ST1A1, P-PST 1, ST1A3, Ts-PST, P-PST 1, STP and STP1, belongs to the sulfotransferase 1 family. It catalyzes the sulfate conjugation of catecholamines, phenolic drugs and neurotransmitters. SULT1A1 is also responsible for the sulfation and activation of minoxidil. It mediates the metabolic activation of carcinogenic N-hydroxyarylamines to DNA binding products and could so participate as modulating factor of cancer risk. SULT1A1 is one of two phenol sulfotransferases with thermostable enzyme activity.
Synonyms:	HAST1; HAST2; P-PST; PST; ST1A1; ST1A3; STP; STP1; TSPST1
Protein Pathways:	Sulfur metabolism



[View online »](#)

**Product images:**

Predicted band size: 34 kDa. Positive control: Jurkat cell and mouse liver tissue lysate.  
Recommended dilution: 1/500-2000. (Gel: 10%SDS-PAGE Lane 1: Jurkat cell lysate Lane 2: Mouse liver tissue lysate Lysates: 40 ug per lane  
Primary antibody: 1/500 dilution Secondary antibody: Goat anti Rabbit IgG - H&L (HRP) at 1/10000 dilution Exposure time: 1 minute)