

## Product datasheet for **TA323277**

### Topoisomerase II alpha (TOP2A) Rabbit Polyclonal Antibody

#### Product data:

Product Type:	Primary Antibodies
Applications:	IHC
Recommended Dilution:	IHC: 50-200 Positive control: Human colon cancer Predicted cell location: Cytoplasm, Nucleus
Reactivity:	Human, Mouse, Rat
Host:	Rabbit
Isotype:	IgG
Clonality:	Polyclonal
Immunogen:	Synthetic peptide corresponding to a region derived from 1517-1531 amino acids of human topoisomerase (DNA) II alpha
Formulation:	PBS pH7.3, 0.05% NaN <sub>3</sub> , 50% glycerol
Concentration:	lot specific
Purification:	Antigen affinity purification
Conjugation:	Unconjugated
Storage:	Store at -20°C as received.
Stability:	Stable for 12 months from date of receipt.
Gene Name:	topoisomerase (DNA) II alpha
Database Link:	<a href="#">NP_001058</a> <a href="#">Entrez Gene 21973 Mouse</a> <a href="#">Entrez Gene 360243 Rat</a> <a href="#">Entrez Gene 7153 Human</a> <a href="#">P11388</a>



[View online »](#)

**Background:**

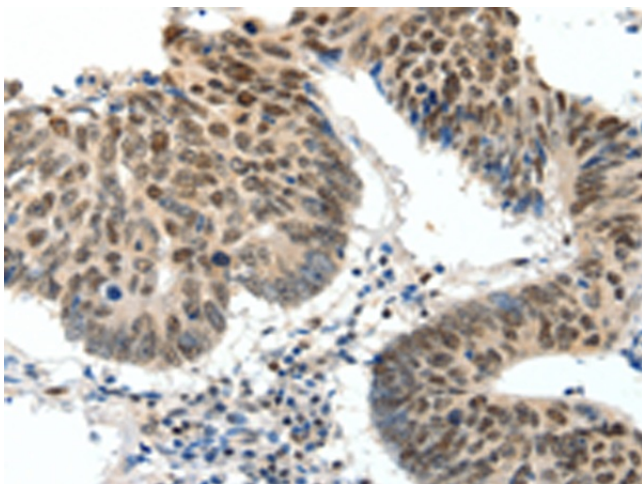
This gene encodes a DNA topoisomerase; an enzyme that controls and alters the topologic states of DNA during transcription. This nuclear enzyme is involved in processes such as chromosome condensation; chromatid separation; and the relief of torsional stress that occurs during DNA transcription and replication. It catalyzes the transient breaking and rejoining of two strands of duplex DNA which allows the strands to pass through one another; thus altering the topology of DNA. Two forms of this enzyme exist as likely products of a gene duplication event. The gene encoding this form; alpha; is localized to chromosome 17 and the beta gene is localized to chromosome 3. The gene encoding this enzyme functions as the target for several anticancer agents and a variety of mutations in this gene have been associated with the development of drug resistance. Reduced activity of this enzyme may also play a role in ataxia-telangiectasia.

**Synonyms:**

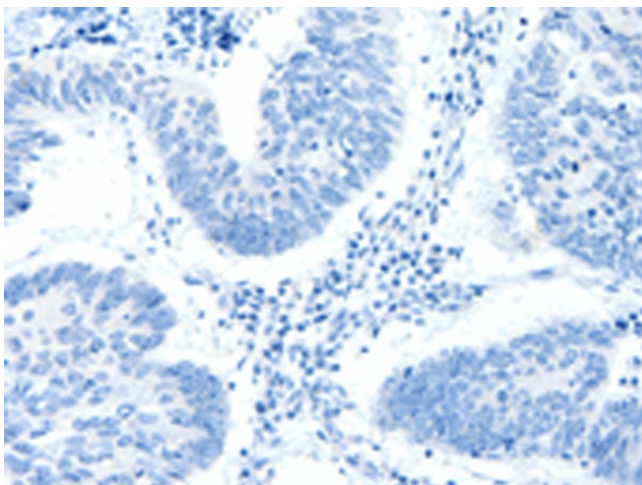
TOP2; TP2A

**Protein Families:**

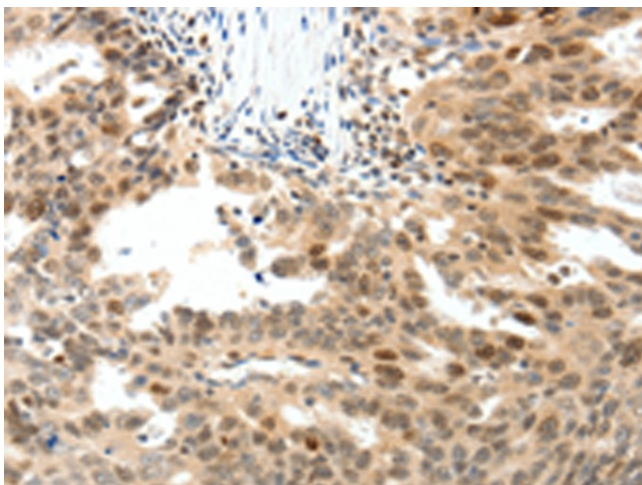
Druggable Genome

**Product images:**

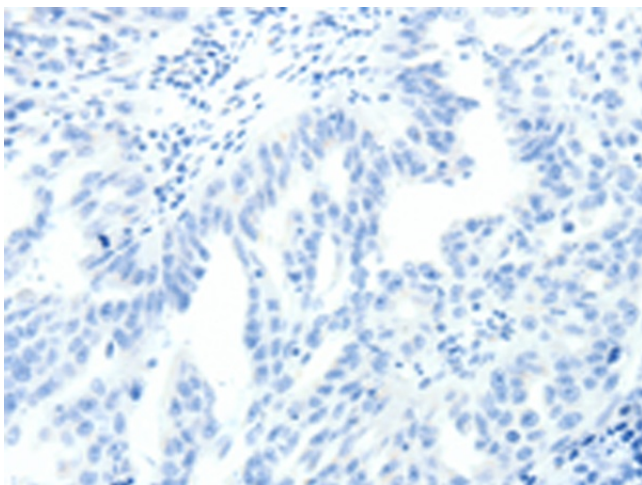
Immunohistochemistry of paraffin-embedded Human colon cancer tissue using TA323277 (TOP2A Antibody) at dilution 1/30 (Original magnification:  $\times 200$ )



Immunohistochemistry of paraffin-embedded Human colon cancer tissue using TA323277 (TOP2A Antibody) at dilution 1/30, treated with synthetic peptide. (Original magnification: x200)



Immunohistochemistry of paraffin-embedded Human ovarian cancer tissue using TA323277 (TOP2A Antibody) at dilution 1/30 (Original magnification: x200)



Immunohistochemistry of paraffin-embedded Human ovarian cancer tissue using TA323277 (TOP2A Antibody) at dilution 1/30, treated with synthetic peptide. (Original magnification: x200)