

## Product datasheet for **TA323276**

### Somatostatin Receptor 3 (SSTR3) Rabbit Polyclonal Antibody

#### Product data:

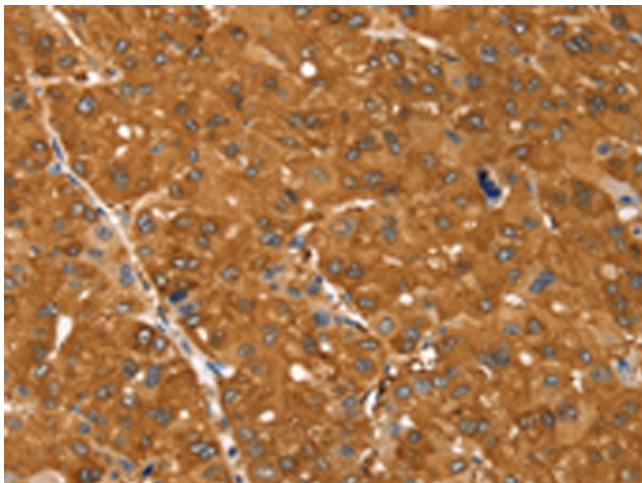
|                       |                                                                                                                                                                                                                                                                                                                                                                                                                                                                           |
|-----------------------|---------------------------------------------------------------------------------------------------------------------------------------------------------------------------------------------------------------------------------------------------------------------------------------------------------------------------------------------------------------------------------------------------------------------------------------------------------------------------|
| Product Type:         | Primary Antibodies                                                                                                                                                                                                                                                                                                                                                                                                                                                        |
| Applications:         | IHC                                                                                                                                                                                                                                                                                                                                                                                                                                                                       |
| Recommended Dilution: | IHC: 50-200<br>Positive control: Human ovarian cancer<br>Predicted cell location: Cytoplasm                                                                                                                                                                                                                                                                                                                                                                               |
| Reactivity:           | Human                                                                                                                                                                                                                                                                                                                                                                                                                                                                     |
| Host:                 | Rabbit                                                                                                                                                                                                                                                                                                                                                                                                                                                                    |
| Isotype:              | IgG                                                                                                                                                                                                                                                                                                                                                                                                                                                                       |
| Clonality:            | Polyclonal                                                                                                                                                                                                                                                                                                                                                                                                                                                                |
| Immunogen:            | Synthetic peptide corresponding to a region derived from 405-418 amino acids of human somatostatin receptor 3                                                                                                                                                                                                                                                                                                                                                             |
| Formulation:          | PBS pH7.3, 0.05% NaN <sub>3</sub> , 50% glycerol                                                                                                                                                                                                                                                                                                                                                                                                                          |
| Concentration:        | lot specific                                                                                                                                                                                                                                                                                                                                                                                                                                                              |
| Purification:         | Antigen affinity purification                                                                                                                                                                                                                                                                                                                                                                                                                                             |
| Conjugation:          | Unconjugated                                                                                                                                                                                                                                                                                                                                                                                                                                                              |
| Storage:              | Store at -20°C as received.                                                                                                                                                                                                                                                                                                                                                                                                                                               |
| Stability:            | Stable for 12 months from date of receipt.                                                                                                                                                                                                                                                                                                                                                                                                                                |
| Gene Name:            | somatostatin receptor 3                                                                                                                                                                                                                                                                                                                                                                                                                                                   |
| Database Link:        | <a href="#">NP_001042</a><br><a href="#">Entrez Gene 6753 Human P32745</a>                                                                                                                                                                                                                                                                                                                                                                                                |
| Background:           | Somatostatin acts at many sites to inhibit the release of many hormones and other secretory proteins. The biological effects of somatostatin are probably mediated by a family of G protein-coupled receptors that are expressed in a tissue-specific manner. SSTR3 is a member of the superfamily of receptors having seven transmembrane segments and is expressed in highest levels in brain and pancreatic islets. SSTR3 is functionally coupled to adenylyl cyclase. |
| Synonyms:             | SS-3-R; SS3-R; SS3R; SSR-28                                                                                                                                                                                                                                                                                                                                                                                                                                               |
| Protein Families:     | Druggable Genome, GPCR, Transmembrane                                                                                                                                                                                                                                                                                                                                                                                                                                     |



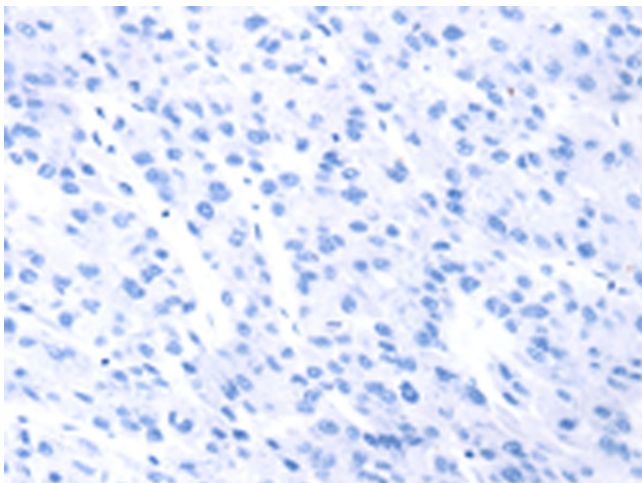
[View online »](#)

Protein Pathways: Neuroactive ligand-receptor interaction

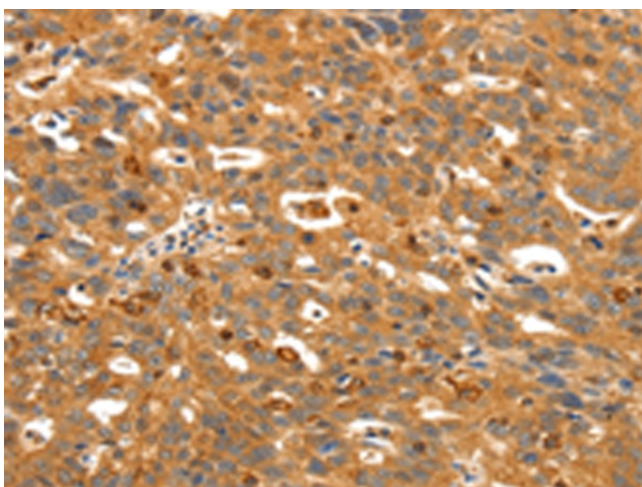
### Product images:



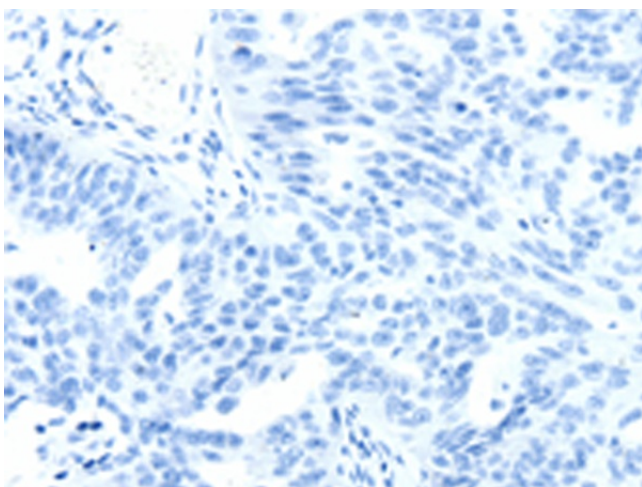
Immunohistochemistry of paraffin-embedded Human ovarian cancer tissue using TA323276 (SSTR3 Antibody) at dilution 1/30 (Original magnification:  $\times 200$ )



Immunohistochemistry of paraffin-embedded Human ovarian cancer tissue using TA323276 (SSTR3 Antibody) at dilution 1/30, treated with synthetic peptide. (Original magnification:  $\times 200$ )



Immunohistochemistry of paraffin-embedded Human liver cancer tissue using TA323276 (SSTR3 Antibody) at dilution 1/30 (Original magnification: ×200)



Immunohistochemistry of paraffin-embedded Human liver cancer tissue using TA323276 (SSTR3 Antibody) at dilution 1/30, treated with synthetic peptide. (Original magnification: ×200)