

## Product datasheet for **TA323273**

### Tcl1 (TCL1A) Rabbit Polyclonal Antibody

#### Product data:

Product Type:	Primary Antibodies
Applications:	WB
Recommended Dilution:	WB: 1:500-2000
Reactivity:	Human, Mouse, Rat
Host:	Rabbit
Isotype:	IgG
Clonality:	Polyclonal
Immunogen:	Full length fusion protein
Formulation:	PBS pH7.3, 0.05% NaN <sub>3</sub> , 50% glycerol
Concentration:	lot specific
Purification:	Antigen affinity purification
Conjugation:	Unconjugated
Storage:	Store at -20°C as received.
Stability:	Stable for 12 months from date of receipt.
Predicted Protein Size:	13 kDa
Gene Name:	T-cell leukemia/lymphoma 1A
Database Link:	<a href="#">NP_001092195</a> <a href="#">Entrez Gene 690575 RatEntrez Gene 8115 Human P56279</a>

**Background:** TCL1 (T cell leukemia 1), MTCP1 and TCL1b belong to the TCL1 proto-oncogene family, and their products are involved in Akt activation during embryonic development, T cell leukemias, polymorphocytic leukemias and B cell lymphomas. The Akt association domain of TCL1 binds with the PH domain of Akt. The formation of an oligomeric TCL-Akt complex is required for TCL1 coactivator function and results in phosphorylation and activation of Akt. Furthermore, functional analysis indicates that the interaction between TCL1 and Akt promotes translocation of Akt to the nucleus. These findings are supported by the crystal structure of TCL1, which suggests that TCL1 may participate in molecular transport.

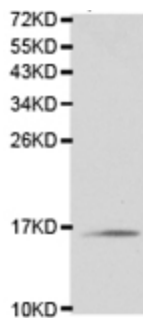
**Synonyms:** TCL1



[View online »](#)

Protein Families: Druggable Genome

### Product images:



Predicted band size: 13 kDa. Positive control: Ramos cell lysate. Recommended dilution: 1/500-2000. (Gel: 12%SDS-PAGE Lysate: 40 ug Primary antibody: 1/500 dilution Secondary antibody: Goat anti Rabbit IgG - H&L (HRP) at 1/10000 dilution Exposure time: 1 minute)