

Product datasheet for **TA323270**

CDK10 Rabbit Polyclonal Antibody

Product data:

Product Type:	Primary Antibodies
Applications:	IHC
Recommended Dilution:	IHC: 25-100 Positive control: Human thyroid cancer Predicted cell location: Cytoplasm
Reactivity:	Human, Mouse, Rat
Host:	Rabbit
Isotype:	IgG
Clonality:	Polyclonal
Immunogen:	Fusion protein corresponding to a region derived from 39-234 amino acids of Human Cyclin-dependent kinase 10
Formulation:	PBS pH7.3, 0.05% NaN ₃ , 50% glycerol
Concentration:	lot specific
Purification:	Antigen affinity purification
Conjugation:	Unconjugated
Storage:	Store at -20°C as received.
Stability:	Stable for 12 months from date of receipt.
Gene Name:	cyclin-dependent kinase 10
Database Link:	NP_003665 Entrez Gene 234854 MouseEntrez Gene 361434 RatEntrez Gene 8558 Human Q15131
Background:	The protein encoded by this gene belongs to the CDK subfamily of the Ser/Thr protein kinase family. The CDK subfamily members are highly similar to the gene products of <i>S. cerevisiae</i> cdc28; and <i>S. pombe</i> cdc2; and are known to be essential for cell cycle progression. This kinase has been shown to play a role in cellular proliferation and its function is limited to cell cycle G2-M phase. Multiple transcript variants encoding different isoforms have been found for this gene.

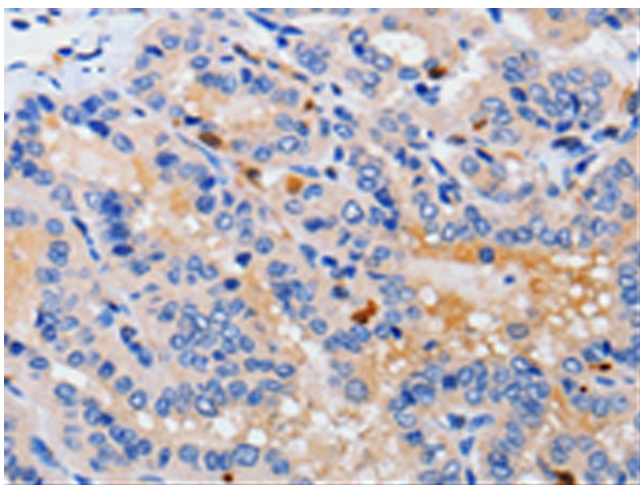


[View online »](#)

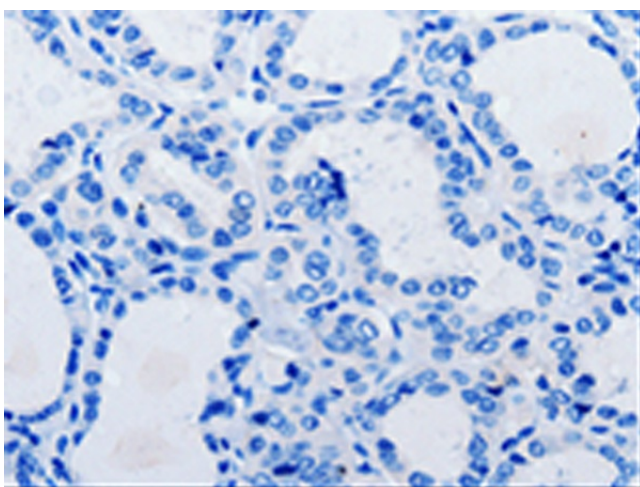
Synonyms: CDC2-related protein kinase; cell division protein kinase 10; cyclin-dependent kinase (CDC2-like) 10; cyclin-dependent kinase 10; cyclin-dependent kinase related protein; PISSLRE; serine; threonine protein kinase PISSLRE

Protein Families: Druggable Genome, Protein Kinase

Product images:



Immunohistochemistry of paraffin-embedded Human thyroid cancer tissue using TA323270 (CDK10 Antibody) at dilution 1/25 (Original magnification: $\times 200$)



Immunohistochemistry of paraffin-embedded Human thyroid cancer tissue using TA323270 (CDK10 Antibody) at dilution 1/25, treated with fusion protein. (Original magnification: $\times 200$)