

## Product datasheet for **TA323269S**

### CDK10 Rabbit Polyclonal Antibody

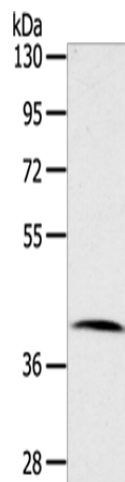
#### Product data:

Product Type:	Primary Antibodies
Applications:	WB
Recommended Dilution:	WB: 500-2000 WB positive control: Human lymphoma tissue
Reactivity:	Human, Mouse, Rat
Host:	Rabbit
Isotype:	IgG
Clonality:	Polyclonal
Immunogen:	Fusion protein corresponding to a region derived from 39-234 amino acids of Human Cyclin-dependent kinase 10
Formulation:	PBS pH7.3, 0.05% NaN <sub>3</sub> , 50% glycerol
Purification:	Antigen affinity purification
Conjugation:	Unconjugated
Storage:	Store at -20°C as received.
Stability:	Stable for 12 months from date of receipt.
Predicted Protein Size:	41 kDa
Gene Name:	cyclin-dependent kinase 10
Database Link:	<a href="#">NP_001092003</a> <a href="#">Entrez Gene 234854 Mouse</a> <a href="#">Entrez Gene 361434 Rat</a> <a href="#">Entrez Gene 8558 Human</a> <a href="#">Q15131</a>
Background:	The protein encoded by this gene belongs to the CDK subfamily of the Ser/Thr protein kinase family. The CDK subfamily members are highly similar to the gene products of <i>S. cerevisiae</i> <i>cdc28</i> ; and <i>S. pombe</i> <i>cdc2</i> ; and are known to be essential for cell cycle progression. This kinase has been shown to play a role in cellular proliferation and its function is limited to cell cycle G2-M phase. Multiple transcript variants encoding different isoforms have been found for this gene.
Synonyms:	PISSSLRE
Protein Families:	Druggable Genome, Protein Kinase



[View online »](#)

## Product images:



Gel: 8%SDS-PAGE  
Lysate: 40  $\mu$ g  
Lane: Human lymphoma tissue  
Primary antibody: [TA323269] (CDK10 Antibody)  
at dilution 1/100  
Secondary antibody: Goat anti rabbit IgG at  
1/8000 dilution  
Exposure time: 20 seconds