

Product datasheet for **TA323269**

CDK10 Rabbit Polyclonal Antibody

Product data:

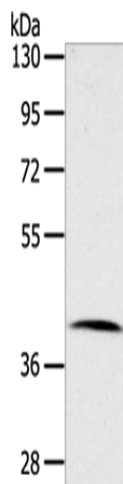
Product Type:	Primary Antibodies
Applications:	WB
Recommended Dilution:	WB: 500-2000 WB positive control: Human lymphoma tissue
Reactivity:	Human, Mouse, Rat
Host:	Rabbit
Isotype:	IgG
Clonality:	Polyclonal
Immunogen:	Fusion protein corresponding to a region derived from 39-234 amino acids of Human Cyclin-dependent kinase 10
Formulation:	PBS pH7.3, 0.05% NaN ₃ , 50% glycerol
Concentration:	lot specific
Purification:	Antigen affinity purification
Conjugation:	Unconjugated
Storage:	Store at -20°C as received.
Stability:	Stable for 12 months from date of receipt.
Predicted Protein Size:	41 kDa
Gene Name:	cyclin-dependent kinase 10
Database Link:	NP_001092003 Entrez Gene 234854 Mouse Entrez Gene 361434 Rat Entrez Gene 8558 Human Q15131
Background:	The protein encoded by this gene belongs to the CDK subfamily of the Ser/Thr protein kinase family. The CDK subfamily members are highly similar to the gene products of <i>S. cerevisiae</i> cdc28; and <i>S. pombe</i> cdc2; and are known to be essential for cell cycle progression. This kinase has been shown to play a role in cellular proliferation and its function is limited to cell cycle G2-M phase. Multiple transcript variants encoding different isoforms have been found for this gene.
Synonyms:	PISSLRE



[View online »](#)

Protein Families: Druggable Genome, Protein Kinase

Product images:



Gel: 8%SDS-PAGE

Lysate: 40 μ g

Lane: Human lymphoma tissue

Primary antibody: TA323269 (CDK10 Antibody) at dilution 1/100

Secondary antibody: Goat anti rabbit IgG at 1/8000 dilution

Exposure time: 20 seconds