

## Product datasheet for **TA323268**

### **MUC20 Rabbit Polyclonal Antibody**

#### **Product data:**

Product Type:	Primary Antibodies
Applications:	IHC, WB
Recommended Dilution:	WB: 500-2000 WB positive control: Mouse eyes tissue IHC: 25-100 Positive control: Human lung cancer Predicted cell location: Cytoplasm
Reactivity:	Human, Mouse
Host:	Rabbit
Isotype:	IgG
Clonality:	Polyclonal
Immunogen:	Fusion protein corresponding to C terminal 300 amino acids of human mucin 20, cell surface associated
Formulation:	PBS pH7.3, 0.05% NaN <sub>3</sub> , 50% glycerol
Concentration:	lot specific
Purification:	Antigen affinity purification
Conjugation:	Unconjugated
Storage:	Store at -20°C as received.
Stability:	Stable for 12 months from date of receipt.
Predicted Protein Size:	72 kDa
Gene Name:	mucin 20, cell surface associated
Database Link:	<a href="#">NP_001091986</a> <a href="#">Entrez Gene 224116 Mouse</a> <a href="#">Entrez Gene 200958 Human</a> <a href="#">Q8N307</a>



[View online »](#)

**Background:**

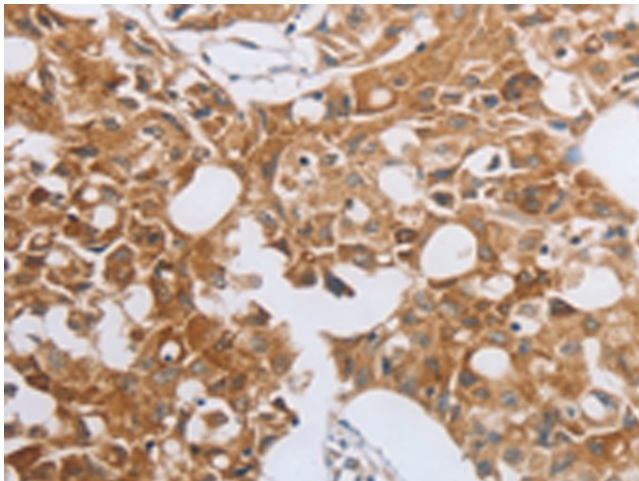
This gene encodes a member of the mucin protein family. Mucins are high molecular weight glycoproteins secreted by many epithelial tissues to form an insoluble mucous barrier. The shorter isoform expressed by this gene is localized to the plasma membrane; whereas the longer isoform might be secreted. The C terminus of this protein associates with the multifunctional docking site of the met proto-oncogene and suppresses activation of some downstream met signaling cascades. The protein features a tandem repeat domain that varies between 2 and 6 copies in most individuals. The allele represented in the human reference assembly contains 12 copies. Multiple transcript variants encoding different isoforms have been found for this gene.

**Synonyms:**

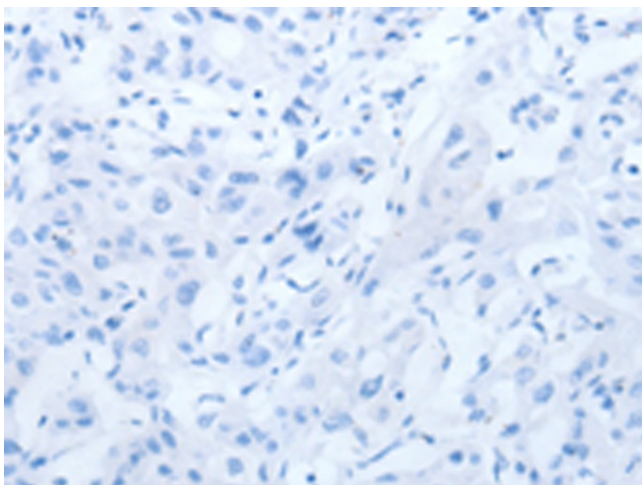
MUC-20

**Product images:**

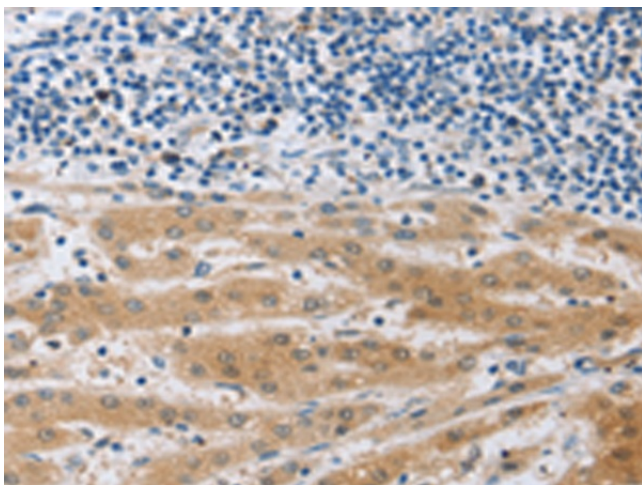
Gel: 10%SDS-PAGE  
Lysate: 40 µg  
Lane: Mouse eyes tissue  
Primary antibody: TA323268 (MUC20 Antibody) at dilution 1/1400  
Secondary antibody: Goat anti rabbit IgG at 1/8000 dilution  
Exposure time: 90 seconds



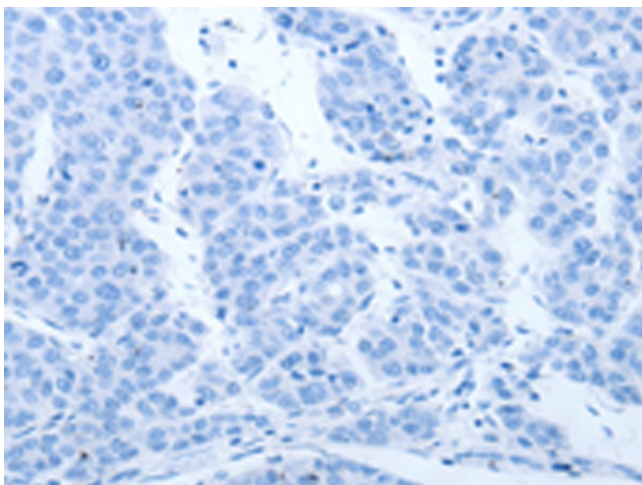
Immunohistochemistry of paraffin-embedded Human lung cancer tissue using TA323268 (MUC20 Antibody) at dilution 1/40 (Original magnification: ×200)



Immunohistochemistry of paraffin-embedded Human lung cancer tissue using TA323268 (MUC20 Antibody) at dilution 1/40, treated with fusion protein. (Original magnification:  $\times 200$ )



Immunohistochemistry of paraffin-embedded Human liver cancer tissue using TA323268 (MUC20 Antibody) at dilution 1/40 (Original magnification:  $\times 200$ )



Immunohistochemistry of paraffin-embedded Human liver cancer tissue using TA323268 (MUC20 Antibody) at dilution 1/40, treated with fusion protein. (Original magnification:  $\times 200$ )