

Product datasheet for **TA323265**

SLC4A4 Rabbit Polyclonal Antibody

Product data:

Product Type:	Primary Antibodies
Applications:	IHC
Recommended Dilution:	IHC: 50-200 Positive control: Human brain Predicted cell location: Cytoplasm
Reactivity:	Human, Mouse, Rat
Host:	Rabbit
Isotype:	IgG
Clonality:	Polyclonal
Immunogen:	Fusion protein corresponding to a region derived from 2-300 amino acids of human solute carrier family 4, sodium bicarbonate cotransporter, member 4
Formulation:	PBS pH7.3, 0.05% NaN ₃ , 50% glycerol
Concentration:	lot specific
Purification:	Antigen affinity purification
Conjugation:	Unconjugated
Storage:	Store at -20°C as received.
Stability:	Stable for 12 months from date of receipt.
Gene Name:	solute carrier family 4 member 4
Database Link:	NP_003750 Entrez Gene 54403 Mouse Entrez Gene 84484 Rat Entrez Gene 8671 Human Q9Y6R1



[View online »](#)

Background:

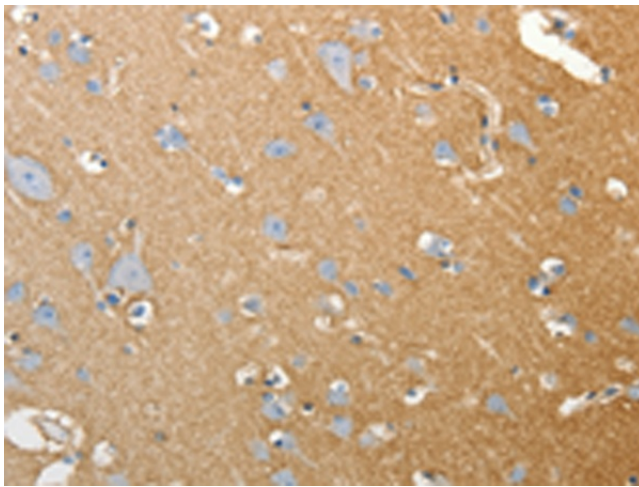
This gene encodes a sodium bicarbonate cotransporter (NBC) involved in the regulation of bicarbonate secretion and absorption and intracellular pH. Mutations in this gene are associated with proximal renal tubular acidosis. Multiple transcript variants encoding different isoforms have been found for this gene. Sodium bicarbonate cotransporters (NBCs) mediate the coupled movement of sodium and bicarbonate ions across the plasma membrane of many cells. This is an electrogenic process with an apparent stoichiometry of 3 bicarbonate ions per sodium ion. Sodium bicarbonate cotransport is involved in bicarbonate secretion/absorption and intracellular pH regulation. Romero and Boron (1999) reviewed NBCs. Soleimani and Burnham (2000) reviewed NBCs and their regulation in physiologic and pathophysiologic states.

Synonyms:

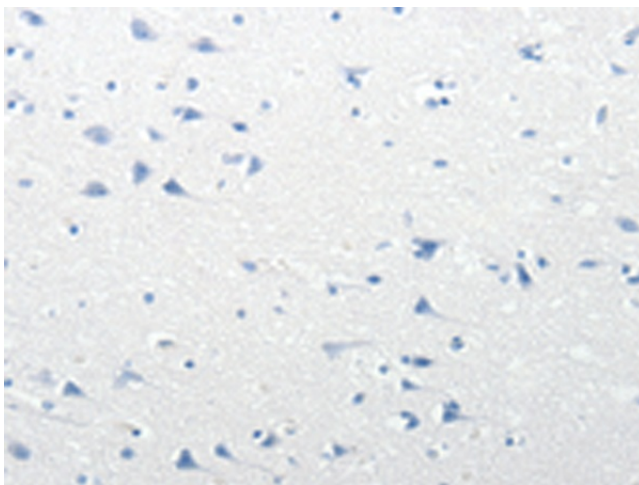
hhNMC; HNBC1; KNBC; kNBC1; NBC1; NBC2; NBCe1-A; pNBC; SLC4A5

Protein Families:

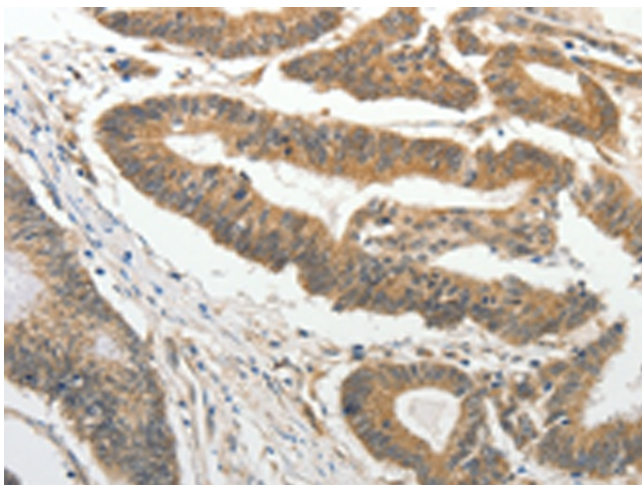
Druggable Genome, Transmembrane

Product images:

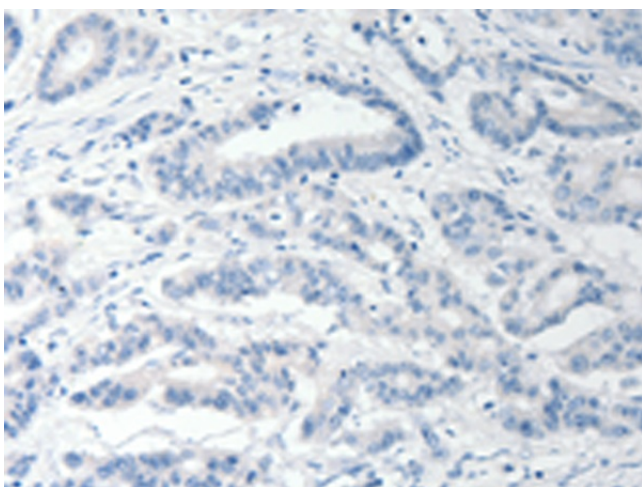
Immunohistochemistry of paraffin-embedded Human brain tissue using TA323265 (SLC4A4 Antibody) at dilution 1/50 (Original magnification: ×200)



Immunohistochemistry of paraffin-embedded Human brain tissue using TA323265 (SLC4A4 Antibody) at dilution 1/50, treated with fusion protein. (Original magnification: ×200)



Immunohistochemistry of paraffin-embedded Human colon cancer tissue using TA323265 (SLC4A4 Antibody) at dilution 1/50 (Original magnification: $\times 200$)



Immunohistochemistry of paraffin-embedded Human colon cancer tissue using TA323265 (SLC4A4 Antibody) at dilution 1/50, treated with fusion protein. (Original magnification: $\times 200$)