

Product datasheet for **TA323263**

DNA Ligase IV (LIG4) Rabbit Polyclonal Antibody

Product data:

Product Type:	Primary Antibodies
Applications:	WB
Recommended Dilution:	WB: 1:500-2000
Reactivity:	Human, Mouse, Rat
Host:	Rabbit
Isotype:	IgG
Clonality:	Polyclonal
Immunogen:	Fusion protein corresponding to C terminal 300 amino acids of human ligase IV, DNA, ATP-dependent
Formulation:	PBS pH7.3, 0.05% NaN ₃ , 50% glycerol
Concentration:	lot specific
Purification:	Antigen affinity purification
Conjugation:	Unconjugated
Storage:	Store at -20°C as received.
Stability:	Stable for 12 months from date of receipt.
Predicted Protein Size:	104 kDa
Gene Name:	DNA ligase 4
Database Link:	NP_001091738 Entrez Gene 290907 Rat Entrez Gene 319583 Mouse Entrez Gene 3981 Human P49917
Background:	Two major pathways, homologous recombination (HR) and nonhomologous end joining (NHEJ), counteract one of the most toxic lesions, the DSB. The core protein complex mediating NHEJ in mammals includes DNA ligase IV (Lig4). Lig4 belongs to an ATP-dependent DNA ligase family, and joins single-strand breaks in a double-stranded polydeoxynucleotide in an ATP-dependent reaction. The complex Lig4-XRCC4 is responsible for the NHEJ ligation step, and XRCC4 enhances the joining activity of Lig4.
Synonyms:	LIG4S

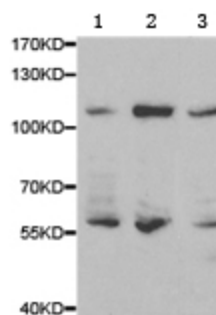


[View online »](#)

Protein Families: Druggable Genome

Protein Pathways: Non-homologous end-joining

Product images:



Predicted band size: 104 kDa. Positive control: K562, Jurkat and MCF7 cell lysate. Recommended dilution: 1/500-2000. (Gel: 8%SDS-PAGE Lane 1: K562 cell lysate Lane 2: Jurkat cell lysate Lane 3: MCF7 cell lysate Lysates: 40 ug per lane Primary antibody: 1/500 dilution Secondary antibody: Goat anti Rabbit IgG - H&L (HRP) at 1/10000 dilution Exposure time: 1 minute)