

## Product datasheet for **TA323258S**

### TGF alpha (TGFA) Rabbit Polyclonal Antibody

#### Product data:

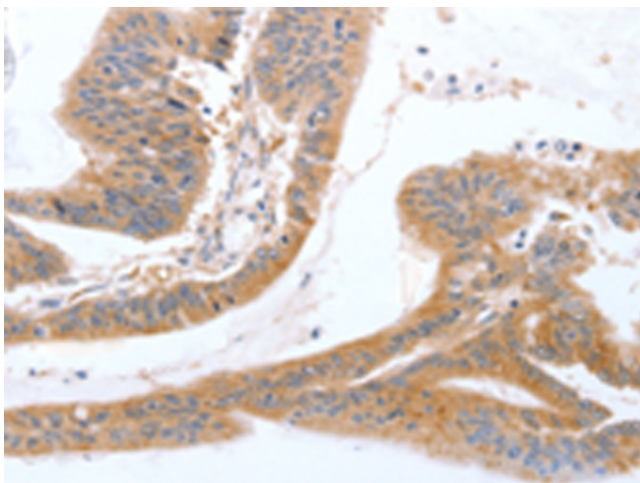
Product Type:	Primary Antibodies
Applications:	IHC
Recommended Dilution:	IHC: 50-200 Positive control: Human colon cancer Predicted cell location: Cytoplasm
Reactivity:	Human, Mouse, Rat
Host:	Rabbit
Isotype:	IgG
Clonality:	Polyclonal
Immunogen:	Fusion protein corresponding to a region derived from 24-98 amino acids of human transforming growth factor, alpha
Formulation:	PBS pH7.3, 0.05% NaN <sub>3</sub> , 50% glycerol
Purification:	Antigen affinity purification
Conjugation:	Unconjugated
Storage:	Store at -20°C as received.
Stability:	Stable for 12 months from date of receipt.
Gene Name:	transforming growth factor alpha
Database Link:	<a href="#">NP_003227</a> <a href="#">Entrez Gene 21802 Mouse</a> <a href="#">Entrez Gene 24827 Rat</a> <a href="#">Entrez Gene 7039 Human</a> <a href="#">P01135</a>
Background:	This gene encodes a growth factor that is a ligand for the epidermal growth factor receptor; which activates a signaling pathway for cell proliferation; differentiation and development. This protein may act as either a transmembrane-bound ligand or a soluble ligand. This gene has been associated with many types of cancers; and it may also be involved in some cases of cleft lip/palate. Alternatively spliced transcript variants encoding different isoforms have been found for this gene.
Synonyms:	TFGA
Protein Families:	Druggable Genome, Secreted Protein, Transmembrane



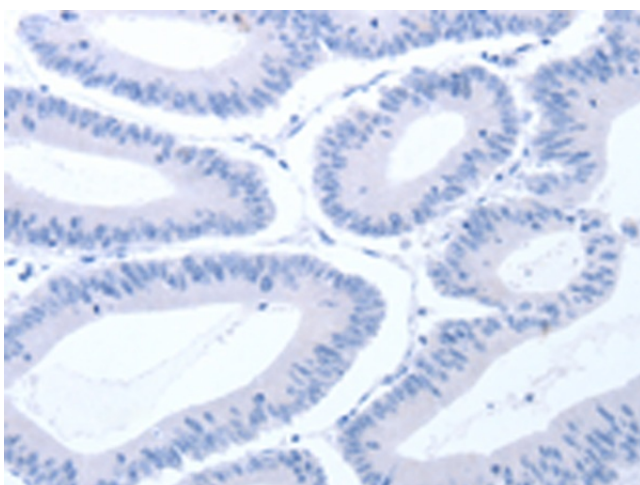
[View online »](#)

**Protein Pathways:** ErbB signaling pathway, Glioma, Non-small cell lung cancer, Pancreatic cancer, Pathways in cancer, Prostate cancer, Renal cell carcinoma

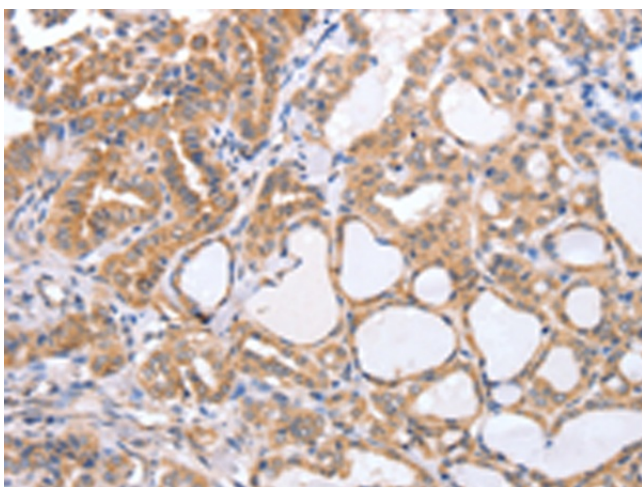
**Product images:**



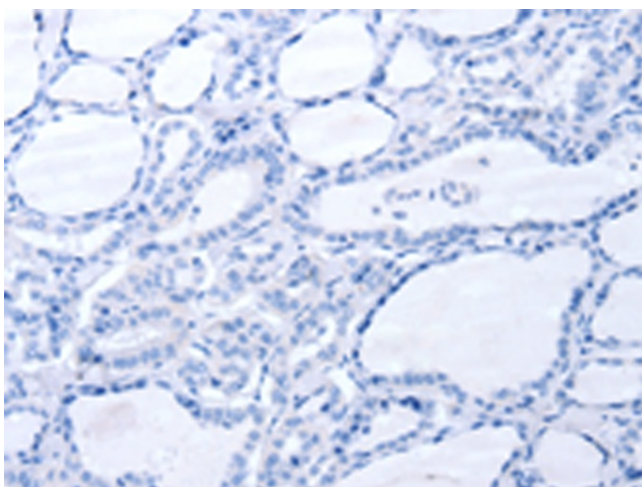
Immunohistochemistry of paraffin-embedded Human colon cancer tissue using [TA323258] (TGFA Antibody) at dilution 1/60 (Original magnification: x200)



Immunohistochemistry of paraffin-embedded Human colon cancer tissue using [TA323258] (TGFA Antibody) at dilution 1/60, treated with fusion protein. (Original magnification: x200)



Immunohistochemistry of paraffin-embedded Human thyroid cancer tissue using [TA323258] (TGFA Antibody) at dilution 1/60 (Original magnification:  $\times 200$ )



Immunohistochemistry of paraffin-embedded Human thyroid cancer tissue using [TA323258] (TGFA Antibody) at dilution 1/60, treated with fusion protein. (Original magnification:  $\times 200$ )