

Product datasheet for **TA323257S**

TRIM32 Rabbit Polyclonal Antibody

Product data:

Product Type:	Primary Antibodies
Applications:	IHC, WB
Recommended Dilution:	WB: 200-1000 WB positive control: Lovo cells IHC: 15-50 Positive control: Human cervical cancer Predicted cell location: Cytoplasm
Reactivity:	Human, Mouse
Host:	Rabbit
Isotype:	IgG
Clonality:	Polyclonal
Immunogen:	Fusion protein corresponding to C terminal 300 amino acids of human tripartite motif containing 32
Formulation:	PBS pH7.3, 0.05% NaN ₃ , 50% glycerol
Purification:	Antigen affinity purification
Conjugation:	Unconjugated
Storage:	Store at -20°C as received.
Stability:	Stable for 12 months from date of receipt.
Predicted Protein Size:	72 kDa
Gene Name:	tripartite motif containing 32
Database Link:	NP_001093149 Entrez Gene 69807 Mouse Entrez Gene 22954 Human Q13049

Background: The protein encoded by this gene is a member of the tripartite motif (TRIM) family. The TRIM motif includes three zinc-binding domains; a RING; a B-box type 1 and a B-box type 2; and a coiled-coil region. The protein localizes to cytoplasmic bodies. The protein has also been localized to the nucleus; where it interacts with the activation domain of the HIV-1 Tat protein. The Tat protein activates transcription of HIV-1 genes.



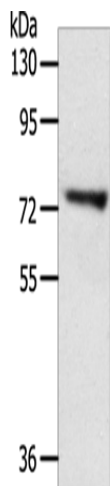
[View online »](#)

Synonyms: BBS11; HT2A; LGMD2H; TATIP

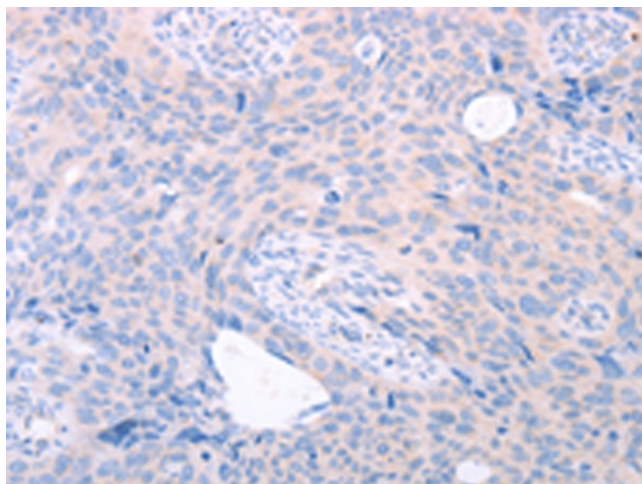
Protein Families: Transcription Factors

Protein Pathways: Ubiquitin mediated proteolysis

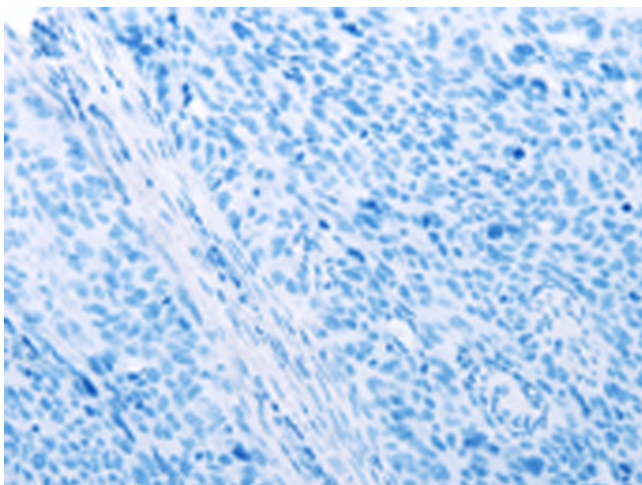
Product images:



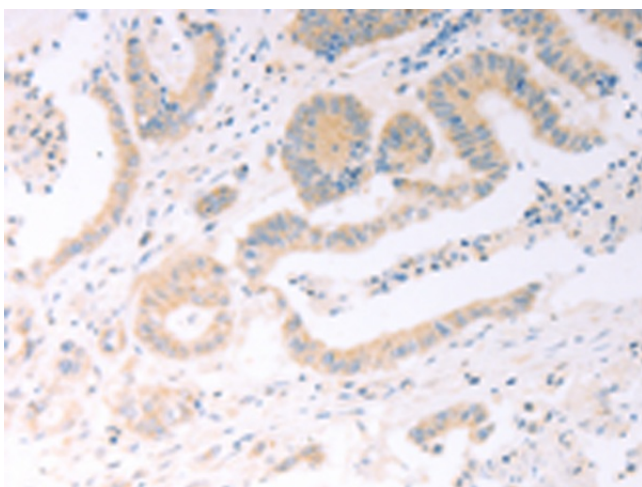
Gel: 8%SDS-PAGE
Lysate: 40 μ g
Lane: Lovo cells
Primary antibody: [TA323257] (TRIM32 Antibody) at dilution 1/200
Secondary antibody: Goat anti rabbit IgG at 1/8000 dilution
Exposure time: 30 minutes



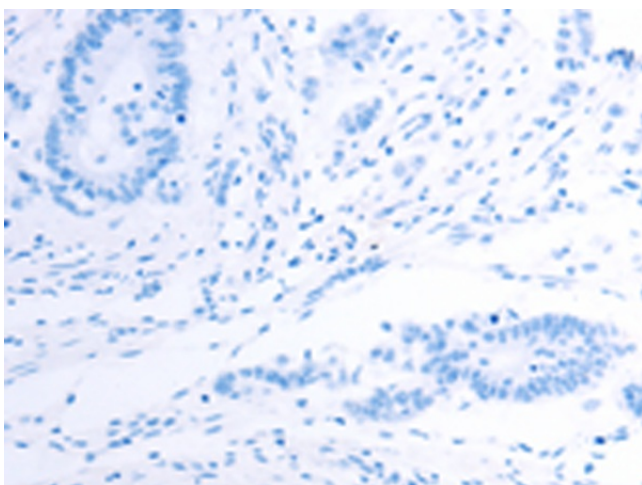
Immunohistochemistry of paraffin-embedded Human cervical cancer tissue using [TA323257] (TRIM32 Antibody) at dilution 1/25 (Original magnification: \times 200)



Immunohistochemistry of paraffin-embedded Human cervical cancer tissue using [TA323257] (TRIM32 Antibody) at dilution 1/25, treated with fusion protein. (Original magnification: $\times 200$)



Immunohistochemistry of paraffin-embedded Human colon cancer tissue using [TA323257] (TRIM32 Antibody) at dilution 1/25 (Original magnification: $\times 200$)



Immunohistochemistry of paraffin-embedded Human colon cancer tissue using [TA323257] (TRIM32 Antibody) at dilution 1/25, treated with fusion protein. (Original magnification: $\times 200$)