

## Product datasheet for **TA323257**

### TRIM32 Rabbit Polyclonal Antibody

#### Product data:

Product Type:	Primary Antibodies
Applications:	IHC, WB
Recommended Dilution:	WB: 200-1000 WB positive control: Lovo cells IHC: 15-50 Positive control: Human cervical cancer Predicted cell location: Cytoplasm
Reactivity:	Human, Mouse
Host:	Rabbit
Isotype:	IgG
Clonality:	Polyclonal
Immunogen:	Fusion protein corresponding to C terminal 300 amino acids of human tripartite motif containing 32
Formulation:	PBS pH7.3, 0.05% NaN <sub>3</sub> , 50% glycerol
Concentration:	lot specific
Purification:	Antigen affinity purification
Conjugation:	Unconjugated
Storage:	Store at -20°C as received.
Stability:	Stable for 12 months from date of receipt.
Predicted Protein Size:	72 kDa
Gene Name:	tripartite motif containing 32
Database Link:	<a href="#">NP_001093149</a> <a href="#">Entrez Gene 69807 Mouse</a> <a href="#">Entrez Gene 22954 Human</a> <a href="#">Q13049</a>



[View online »](#)

**Background:**

The protein encoded by this gene is a member of the tripartite motif (TRIM) family. The TRIM motif includes three zinc-binding domains; a RING; a B-box type 1 and a B-box type 2; and a coiled-coil region. The protein localizes to cytoplasmic bodies. The protein has also been localized to the nucleus; where it interacts with the activation domain of the HIV-1 Tat protein. The Tat protein activates transcription of HIV-1 genes.

**Synonyms:**

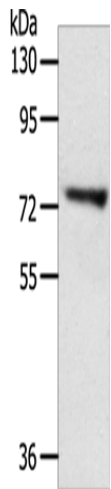
BBS11; HT2A; LGMD2H; TATIP

**Protein Families:**

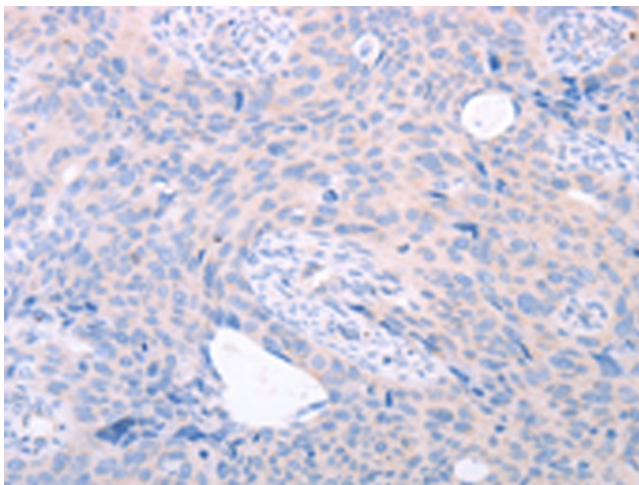
Transcription Factors

**Protein Pathways:**

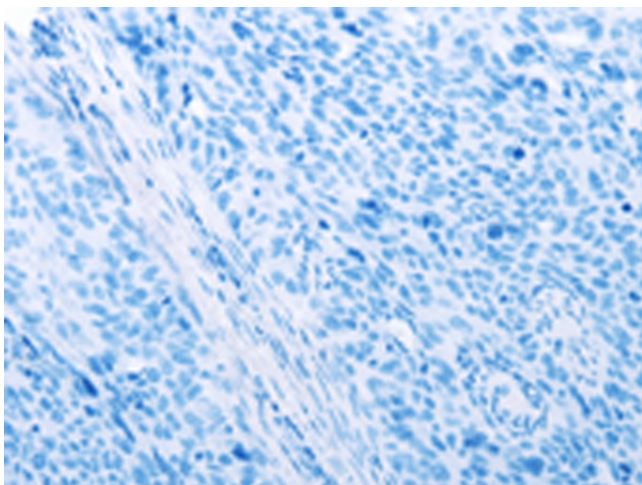
Ubiquitin mediated proteolysis

**Product images:**

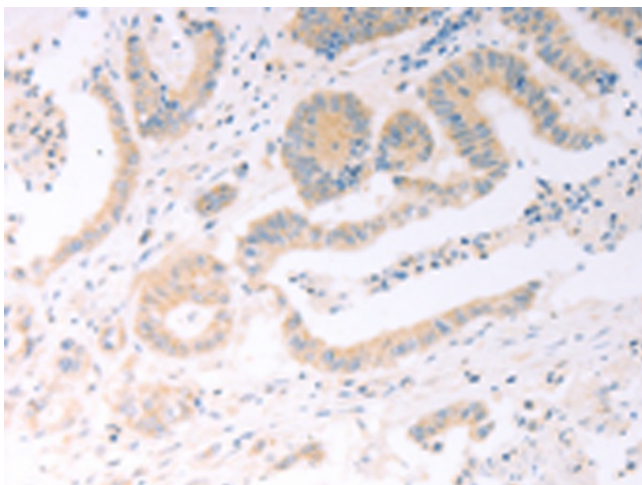
Gel: 8%SDS-PAGE  
Lysate: 40 µg  
Lane: Lovo cells  
Primary antibody: TA323257 (TRIM32 Antibody) at dilution 1/200  
Secondary antibody: Goat anti rabbit IgG at 1/8000 dilution  
Exposure time: 30 minutes



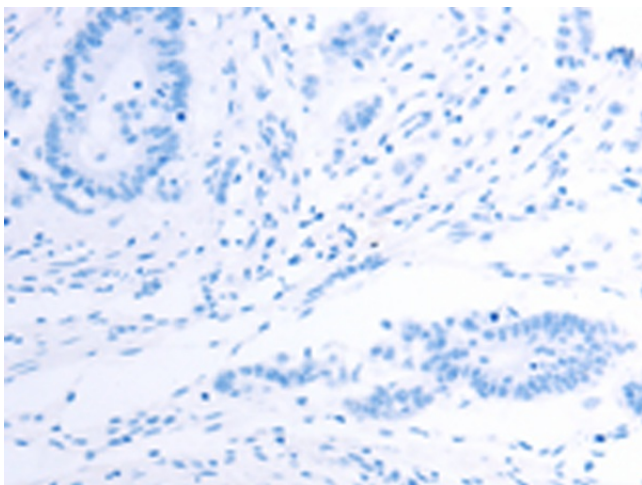
Immunohistochemistry of paraffin-embedded Human cervical cancer tissue using TA323257 (TRIM32 Antibody) at dilution 1/25 (Original magnification: x200)



Immunohistochemistry of paraffin-embedded Human cervical cancer tissue using TA323257 (TRIM32 Antibody) at dilution 1/25, treated with fusion protein. (Original magnification:  $\times 200$ )



Immunohistochemistry of paraffin-embedded Human colon cancer tissue using TA323257 (TRIM32 Antibody) at dilution 1/25 (Original magnification:  $\times 200$ )



Immunohistochemistry of paraffin-embedded Human colon cancer tissue using TA323257 (TRIM32 Antibody) at dilution 1/25, treated with fusion protein. (Original magnification:  $\times 200$ )