

## Product datasheet for **TA323256**

### TRIM32 Rabbit Polyclonal Antibody

#### Product data:

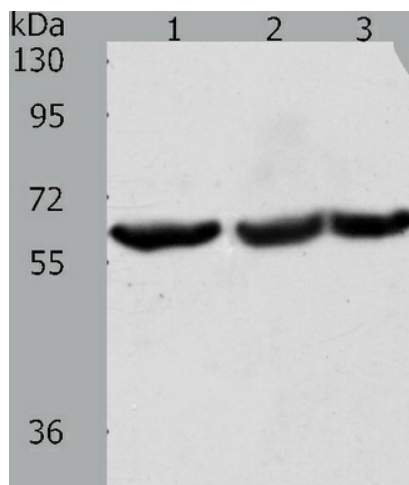
Product Type:	Primary Antibodies
Applications:	IHC, WB
Recommended Dilution:	ELISA: 1:2000-5000, WB: 1:500-2000, IHC: 1:50-200
Reactivity:	Human, Mouse, Rat
Host:	Rabbit
Isotype:	IgG
Clonality:	Polyclonal
Immunogen:	Fusion protein corresponding to C terminal 300 amino acids of human tripartite motif containing 32
Formulation:	PBS pH7.3, 0.05% NaN <sub>3</sub> , 50% glycerol
Concentration:	lot specific
Purification:	Antigen affinity purification
Conjugation:	Unconjugated
Storage:	Store at -20°C as received.
Stability:	Stable for 12 months from date of receipt.
Predicted Protein Size:	72 kDa
Gene Name:	tripartite motif containing 32
Database Link:	<a href="#">NP_001093149</a> <a href="#">Entrez Gene 69807 Mouse</a> <a href="#">Entrez Gene 313264 Rat</a> <a href="#">Entrez Gene 22954 Human</a> <a href="#">Q13049</a>
Background:	The protein encoded by this gene is a member of the tripartite motif (TRIM) family. The TRIM motif includes three zinc-binding domains; a RING; a B-box type 1 and a B-box type 2; and a coiled-coil region. The protein localizes to cytoplasmic bodies. The protein has also been localized to the nucleus; where it interacts with the activation domain of the HIV-1 Tat protein. The Tat protein activates transcription of HIV-1 genes.
Synonyms:	BBS11; HT2A; LGMD2H; TATIP
Protein Families:	Transcription Factors



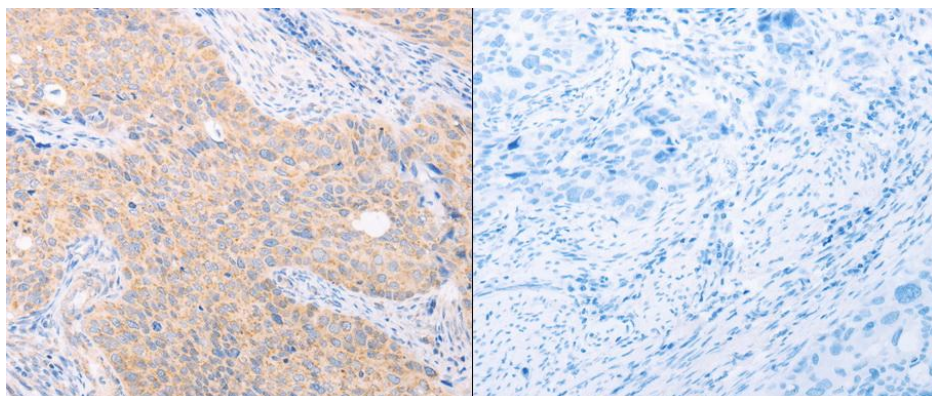
[View online »](#)

Protein Pathways: Ubiquitin mediated proteolysis

### Product images:



Predicted band size: 72 kDa. Positive control: Jurkat, PC3 and Lovo cell lysate. Recommended dilution: 1/500-2000. (Gel: 8%SDS-PAGE Lane 1: Jurkat cell lysate Lane 2: PC3 cell lysate Lane 3: Lovo cell lysate Lysates: 40 ug per lane Primary antibody: 1/300 dilution Secondary antibody: Goat anti Rabbit IgG - H&L (HRP) at 1/10000 dilution Exposure time: 30 seconds)



Predicted cell location: Cytoplasm. Positive control: Human cervical cancer tissue. Recommended dilution: 1/50-200 The image on the left is immunohistochemistry of paraffin-embedded human cervical cancer tissue using TRIM32 antibody at dilution 1/40, on the right is treated with the fusion protein. (Original magnification:x200)