

Product datasheet for **TA323255**

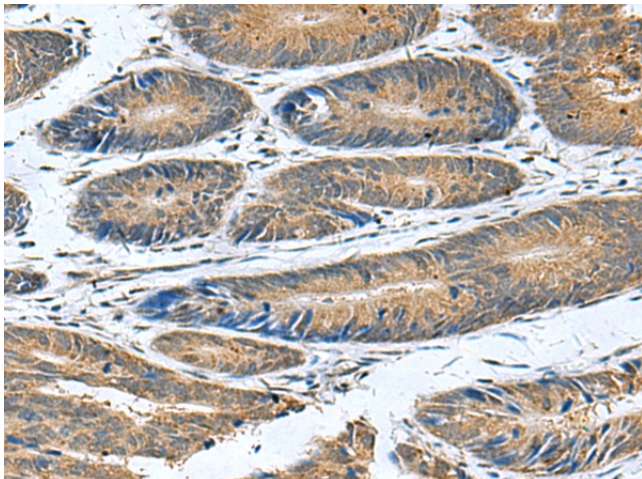
CLEC1B Rabbit Polyclonal Antibody

Product data:

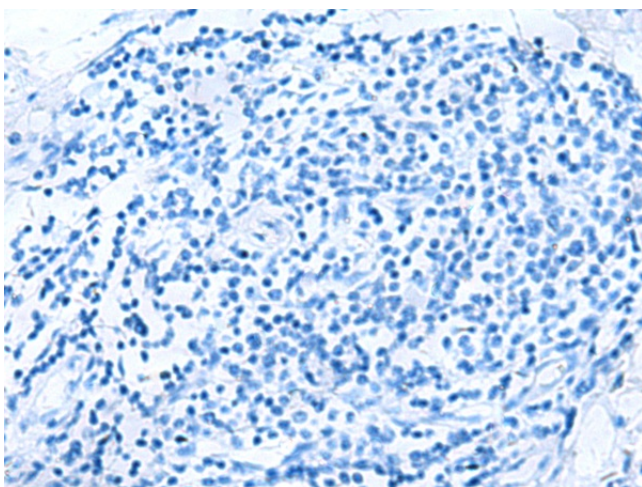
Product Type:	Primary Antibodies
Applications:	IHC
Recommended Dilution:	IHC: 50-200 Positive control: Human colorectal cancer Predicted cell location: Cytoplasm
Reactivity:	Human
Host:	Rabbit
Isotype:	IgG
Clonality:	Polyclonal
Immunogen:	Full length fusion protein
Formulation:	PBS pH7.3, 0.05% NaN ₃ , 50% glycerol
Concentration:	lot specific
Purification:	Antigen affinity purification
Conjugation:	Unconjugated
Storage:	Store at -20°C as received.
Stability:	Stable for 12 months from date of receipt.
Gene Name:	C-type lectin domain family 1 member B
Database Link:	NP_057593 Entrez Gene 51266 Human Q9P126
Background:	Natural killer (NK) cells express multiple calcium-dependent (C-type) lectin-like receptors; such as CD94 (KLRD1; MIM 602894) and NKG2D (KLRC4; MIM 602893); that interact with major histocompatibility complex class I molecules and either inhibit or activate cytotoxicity and cytokine secretion. CLEC2 is a C-type lectin-like receptor expressed in myeloid cells and NK cells.
Synonyms:	1810061113Rik; CLEC2; CLEC2B; PRO1384; QDED721
Protein Families:	Druggable Genome, Transmembrane



[View online »](#)

Product images:

Immunohistochemistry of paraffin-embedded Human colorectal cancer tissue using TA323255 (CLEC1B Antibody) at dilution 1/55 (Original magnification: $\times 200$)



Immunohistochemistry of paraffin-embedded Human colorectal cancer tissue using TA323255 (CLEC1B Antibody) at dilution 1/55, treated with fusion protein. (Original magnification: $\times 200$)