

Product datasheet for **TA323253**

SLC39A6 Rabbit Polyclonal Antibody

Product data:

Product Type:	Primary Antibodies
Applications:	IHC, WB
Recommended Dilution:	WB: 500-2000 WB positive control: Human colon cancer tissue IHC: 50-200 Positive control: Human cervical cancer Predicted cell location: Cytoplasm, Nucleus
Reactivity:	Human, Mouse, Rat
Host:	Rabbit
Isotype:	IgG
Clonality:	Polyclonal
Immunogen:	Synthetic peptide corresponding to a region derived from 303-315 amino acids of Human solute carrier family 39 (zinc transporter), member 6
Formulation:	PBS pH7.3, 0.05% NaN ₃ , 50% glycerol
Concentration:	lot specific
Purification:	Antigen affinity purification
Conjugation:	Unconjugated
Storage:	Store at -20°C as received.
Stability:	Stable for 12 months from date of receipt.
Predicted Protein Size:	49 kDa
Gene Name:	solute carrier family 39 member 6
Database Link:	NP_001092876 Entrez Gene 106957 Mouse Entrez Gene 291733 Rat Entrez Gene 25800 Human Q13433
Background:	Zinc is an essential cofactor for hundreds of enzymes. It is involved in protein; nucleic acid; carbohydrate; and lipid metabolism; as well as in the control of gene transcription; growth; development; and differentiation. SLC39A6 belongs to a subfamily of proteins that show structural characteristics of zinc transporters.

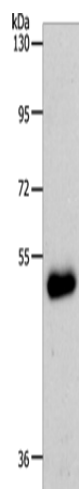


[View online »](#)

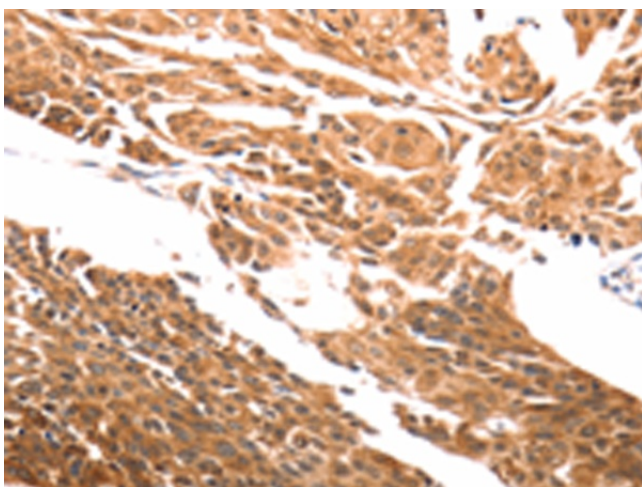
Synonyms: LIV-1; ZIP6

Protein Families: Druggable Genome, Transmembrane

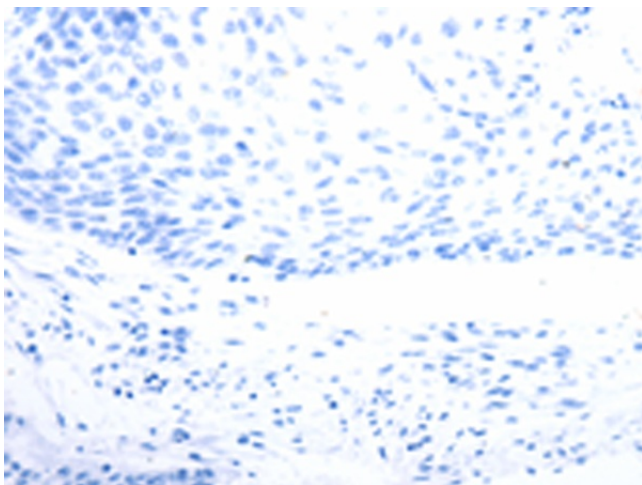
Product images:



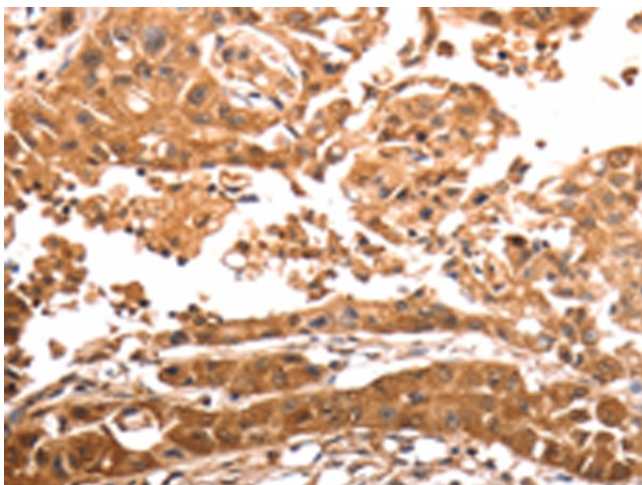
Gel: 10%SDS-PAGE
Lysate: 60 μ g
Lane: Human colon cancer tissue
Primary antibody: TA323253 (SLC39A6 Antibody)
at dilution 1/500
Secondary antibody: Goat anti rabbit IgG at
1/8000 dilution
Exposure time: 5 minutes



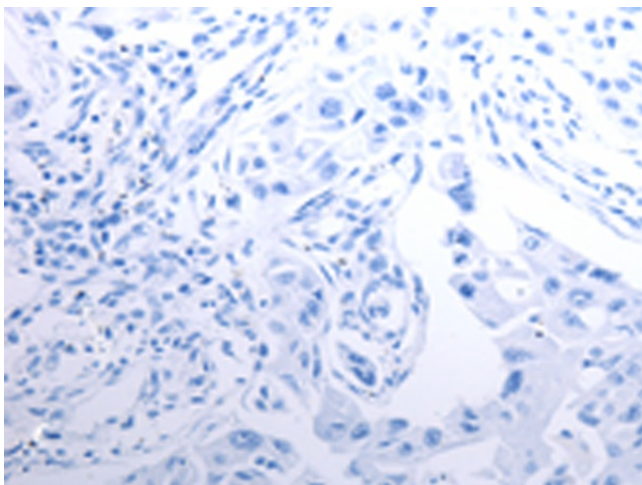
Immunohistochemistry of paraffin-embedded
Human cervical cancer tissue using TA323253
(SLC39A6 Antibody) at dilution 1/30 (Original
magnification: \times 200)



Immunohistochemistry of paraffin-embedded Human cervical cancer tissue using TA323253 (SLC39A6 Antibody) at dilution 1/30, treated with synthetic peptide. (Original magnification: ×200)



Immunohistochemistry of paraffin-embedded Human lung cancer tissue using TA323253 (SLC39A6 Antibody) at dilution 1/30 (Original magnification: ×200)



Immunohistochemistry of paraffin-embedded Human lung cancer tissue using TA323253 (SLC39A6 Antibody) at dilution 1/30, treated with synthetic peptide. (Original magnification: ×200)