

Product datasheet for **TA323250**

Prostatic Acid Phosphatase (ACPP) Rabbit Polyclonal Antibody

Product data:

Product Type:	Primary Antibodies
Applications:	WB
Recommended Dilution:	WB: 200-1000 WB positive control: Mouse liver tissue
Reactivity:	Human, Mouse
Host:	Rabbit
Isotype:	IgG
Clonality:	Polyclonal
Immunogen:	Fusion protein corresponding to a region derived from 3-389 amino acids of human acid phosphatase, prostate
Formulation:	PBS pH7.3, 0.05% NaN ₃ , 50% glycerol
Concentration:	lot specific
Purification:	Antigen affinity purification
Conjugation:	Unconjugated
Storage:	Store at -20°C as received.
Stability:	Stable for 12 months from date of receipt.
Predicted Protein Size:	48 kDa
Gene Name:	acid phosphatase, prostate
Database Link:	NP_001090 Entrez Gene 56318 Mouse Entrez Gene 55 Human P15309
Background:	This gene encodes an enzyme that catalyzes the conversion of orthophosphoric monoester to alcohol and orthophosphate. It is synthesized under androgen regulation and is secreted by the epithelial cells of the prostate gland. An alternatively spliced transcript variant encoding a longer isoform has been found for this gene. This isoform contains a transmembrane domain and is localized in the plasma membrane-endosomal-lysosomal pathway.
Synonyms:	5 -NT; 5 ¹ -NT; ACP-3; ACP3

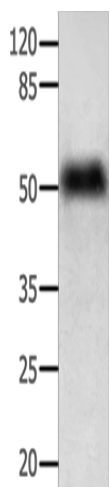


[View online »](#)

Protein Families: Druggable Genome, Phosphatase, Transmembrane

Protein Pathways: Riboflavin metabolism

Product images:



Gel: 10%SDS-PAGE
Lysate: 40 μ g
Lane: Mouse liver tissue
Primary antibody: TA323250 (ACP3 Antibody) at dilution 1/250
Secondary antibody: Goat anti rabbit IgG at 1/8000 dilution
Exposure time: 10 seconds