

## Product datasheet for **TA323243S**

### Mitofilin (IMMT) Rabbit Polyclonal Antibody

#### Product data:

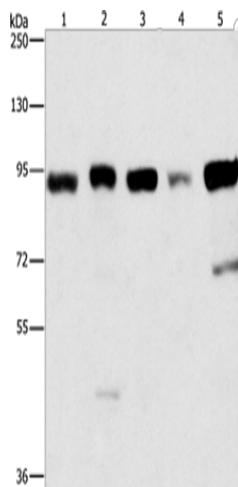
Product Type:	Primary Antibodies
Applications:	IHC, WB
Recommended Dilution:	WB: 500-2000 WB positive control: Raji and 231 cells, HepG2, HeLa and 293T cells IHC: 50-200 Positive control: Human lung cancer Predicted cell location: Cytoplasm
Reactivity:	Human, Mouse
Host:	Rabbit
Isotype:	IgG
Clonality:	Polyclonal
Immunogen:	Fusion protein corresponding to a C terminal 300 amino acids of human inner membrane protein, mitochondrial
Formulation:	PBS pH7.3, 0.05% NaN <sub>3</sub> , 50% glycerol
Purification:	Antigen affinity purification
Conjugation:	Unconjugated
Storage:	Store at -20°C as received.
Stability:	Stable for 12 months from date of receipt.
Predicted Protein Size:	84 kDa
Gene Name:	inner membrane mitochondrial protein
Database Link:	<a href="#">NP_001093639</a> <a href="#">Entrez Gene 76614 Mouse</a> <a href="#">Entrez Gene 10989 Human</a> <a href="#">Q16891</a>
Background:	Mitochondrial inner membrane protein is a protein that in humans is encoded by the IMMT gene. IMMT has been shown to interact with BAT2. The mitochondrial inner membrane (IM) serves as the site for ATP production by hosting the oxidative phosphorylation complex machinery most notably on the crista membranes. Disruption of the crista structure has been implicated in a variety of cardiovascular and neurodegenerative diseases.



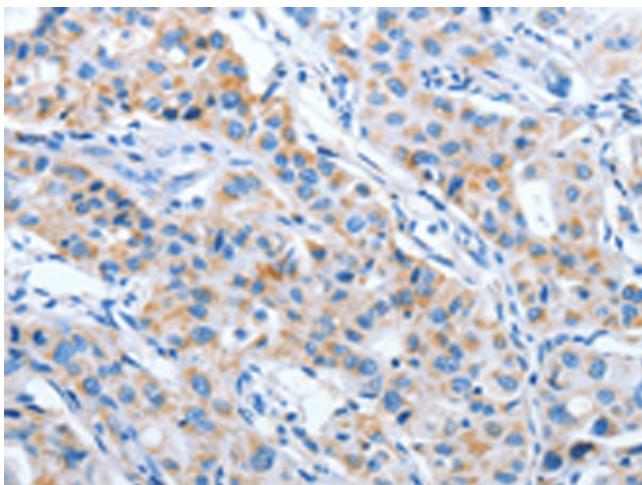
[View online »](#)

Synonyms: 89; HMP; Mic60; MINOS2; P87; P89; PIG4; PIG52

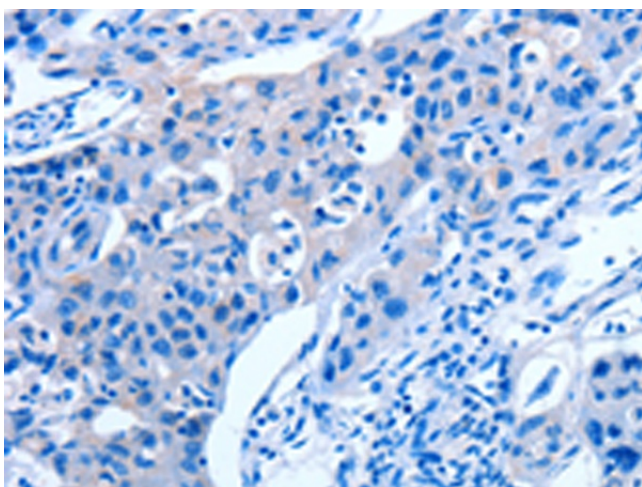
### Product images:



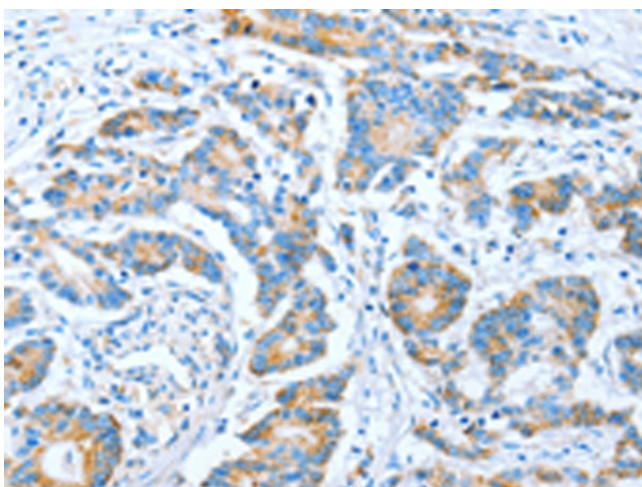
Gel: 6%SDS-PAGE  
Lysate: 40  $\mu$ g  
Lane 1-5: Raji cells  
231 cells  
HepG2 cells  
Hela cells  
293T cells  
Primary antibody: [TA323243] (IMMT Antibody) at dilution 1/270  
Secondary antibody: Goat anti rabbit IgG at 1/8000 dilution  
Exposure time: 5 seconds



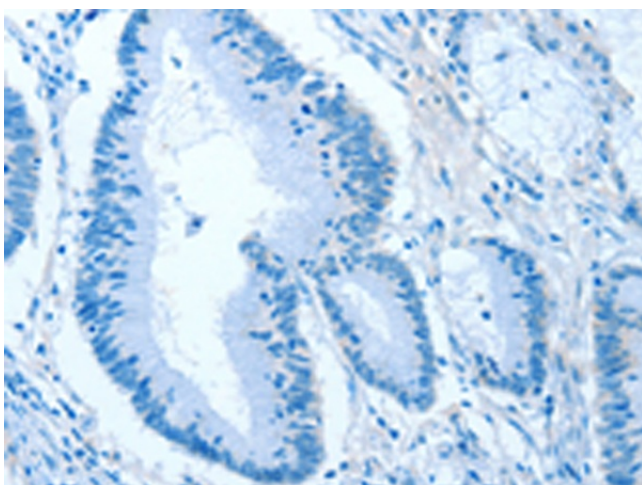
Immunohistochemistry of paraffin-embedded Human lung cancer tissue using [TA323243] (IMMT Antibody) at dilution 1/70 (Original magnification:  $\times$ 200)



Immunohistochemistry of paraffin-embedded Human lung cancer tissue using [TA323243] (IMMT Antibody) at dilution 1/70, treated with fusion protein. (Original magnification: ×200)



Immunohistochemistry of paraffin-embedded Human colon cancer tissue using [TA323243] (IMMT Antibody) at dilution 1/70 (Original magnification: ×200)



Immunohistochemistry of paraffin-embedded Human colon cancer tissue using [TA323243] (IMMT Antibody) at dilution 1/70, treated with fusion protein. (Original magnification: ×200)