

Product datasheet for **TA323242S**

Actin (ACTA1) Rabbit Polyclonal Antibody

Product data:

Product Type:	Primary Antibodies
Applications:	IHC, WB
Recommended Dilution:	WB: 500-2000 WB positive control: Mouse muscle and heart tissue IHC: 50-200 Positive control: Human liver cancer Predicted cell location: Cytoplasm
Reactivity:	Human, Mouse, Rat
Host:	Rabbit
Isotype:	IgG
Clonality:	Polyclonal
Immunogen:	Fusion protein corresponding to C terminal 300 amino acids of human actin, alpha 1, skeletal muscle
Formulation:	PBS pH7.3, 0.05% NaN ₃ , 50% glycerol
Purification:	Antigen affinity purification
Conjugation:	Unconjugated
Storage:	Store at -20°C as received.
Stability:	Stable for 12 months from date of receipt.
Predicted Protein Size:	42 kDa
Gene Name:	actin, alpha 1, skeletal muscle
Database Link:	NP_001091 Entrez Gene 11459 Mouse Entrez Gene 29437 Rat Entrez Gene 58 Human P68133



[View online »](#)

Background:

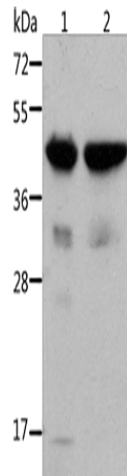
The product encoded by this gene belongs to the actin family of proteins, which are highly conserved proteins that play a role in cell motility, structure and integrity. Alpha, beta and gamma actin isoforms have been identified, with alpha actins being a major constituent of the contractile apparatus, while beta and gamma actins are involved in the regulation of cell motility. This actin is an alpha actin that is found in skeletal muscle. Mutations in this gene cause nemaline myopathy type 3, congenital myopathy with excess of thin myofilaments, congenital myopathy with cores, and congenital myopathy with fiber-type disproportion, diseases that lead to muscle fiber defects.

Synonyms:

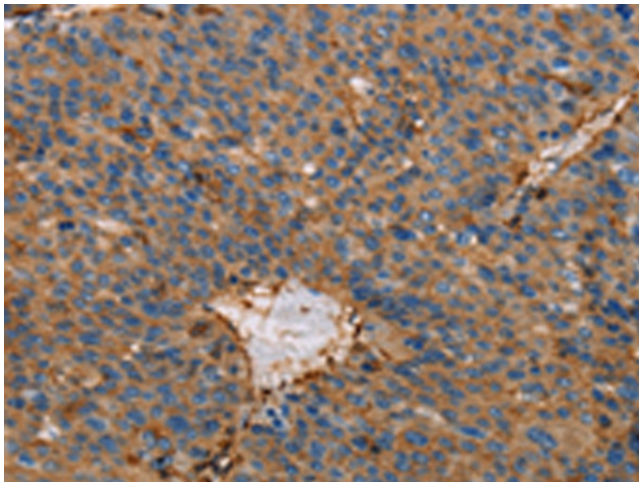
ACTA; ASMA; CFTD; CFTD1; CFTDM; MPFD; NEM1; NEM2; NEM3; SHPM

Protein Families:

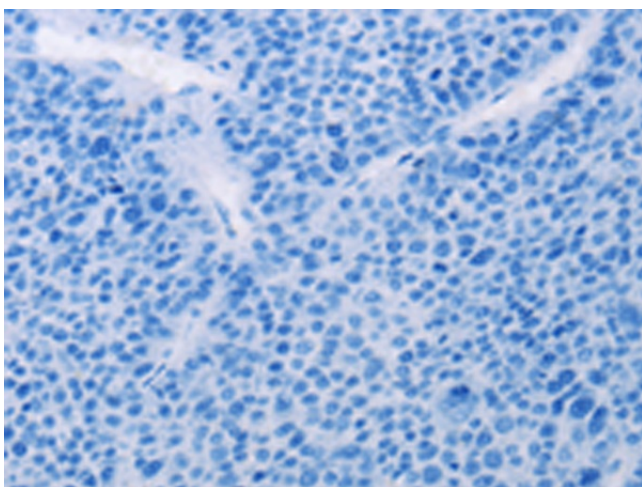
Stem cell - Pluripotency

Product images:


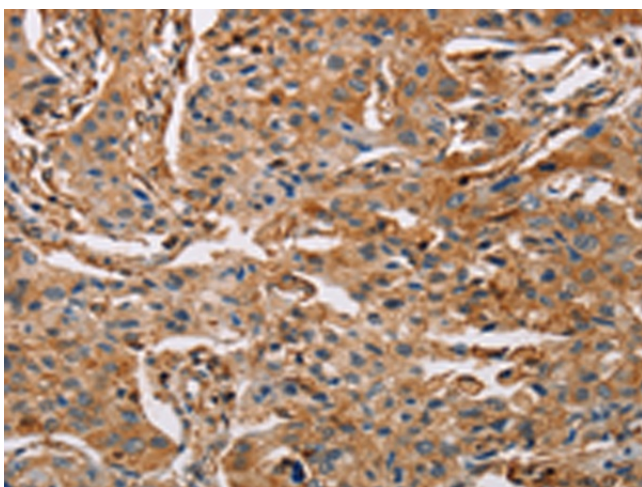
Gel: 10%SDS-PAGE
 Lysate: 40 μ g
 Lane 1-2: Mouse muscle tissue
 Mouse heart tissue
 Primary antibody: [TA323242] (ACTA1 Antibody)
 at dilution 1/500
 Secondary antibody: Goat anti rabbit IgG at
 1/8000 dilution
 Exposure time: 20 seconds



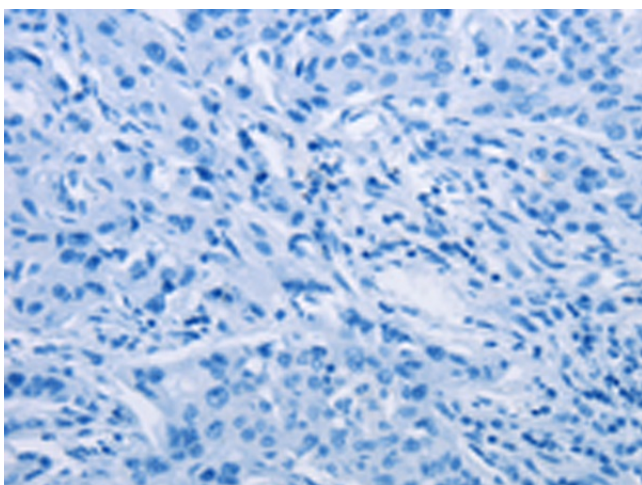
Immunohistochemistry of paraffin-embedded
 Human liver cancer tissue using [TA323242]
 (ACTA1 Antibody) at dilution 1/65 (Original
 magnification: \times 200)



Immunohistochemistry of paraffin-embedded Human liver cancer tissue using [TA323242] (ACTA1 Antibody) at dilution 1/65, treated with fusion protein. (Original magnification: $\times 200$)



Immunohistochemistry of paraffin-embedded Human lung cancer tissue using [TA323242] (ACTA1 Antibody) at dilution 1/65 (Original magnification: $\times 200$)



Immunohistochemistry of paraffin-embedded Human lung cancer tissue using [TA323242] (ACTA1 Antibody) at dilution 1/65, treated with fusion protein. (Original magnification: $\times 200$)