

## Product datasheet for **TA323241S**

### ACTN3 Rabbit Polyclonal Antibody

#### Product data:

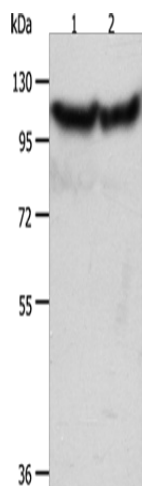
Product Type:	Primary Antibodies
Applications:	WB
Recommended Dilution:	WB: 500-2000 WB positive control: Hela and NIH/3T3 cells
Reactivity:	Human, Mouse
Host:	Rabbit
Isotype:	IgG
Clonality:	Polyclonal
Immunogen:	Fusion protein corresponding to a region derived from 3-261 amino acids of human actinin, alpha 3
Formulation:	PBS pH7.3, 0.05% NaN <sub>3</sub> , 50% glycerol
Purification:	Antigen affinity purification
Conjugation:	Unconjugated
Storage:	Store at -20°C as received.
Stability:	Stable for 12 months from date of receipt.
Predicted Protein Size:	103 kDa
Gene Name:	actinin alpha 3 (gene/pseudogene)
Database Link:	<a href="#">NP_001095</a> <a href="#">Entrez Gene 11474 Mouse</a> <a href="#">Entrez Gene 89 Human</a> <a href="#">Q08043</a>
Background:	This gene encodes a member of the alpha-actin binding protein gene family. The encoded protein is primarily expressed in skeletal muscle and functions as a structural component of sarcomeric Z line. This protein is involved in crosslinking actin containing thin filaments. An allelic polymorphism in this gene results in both coding and non-coding variants. The reference genome contains the non-coding allele. The non-functional allele of this gene is associated with elite athlete status.
Synonyms:	MGC117002; MGC117005



[View online »](#)

**Protein Pathways:** Adherens junction, Arrhythmogenic right ventricular cardiomyopathy (ARVC), Focal adhesion, Leukocyte transendothelial migration, Regulation of actin cytoskeleton, Systemic lupus erythematosus, Tight junction

**Product images:**



Gel: 10%SDS-PAGE  
Lysate: 40  $\mu$ g  
Lane 1-2: Hela cells  
NIH/3T3 cells  
Primary antibody: [TA323241] (ACTN3 Antibody)  
at dilution 1/300  
Secondary antibody: Goat anti rabbit IgG at  
1/8000 dilution  
Exposure time: 10 seconds