

Product datasheet for **TA323240**

ACTN3 Rabbit Polyclonal Antibody

Product data:

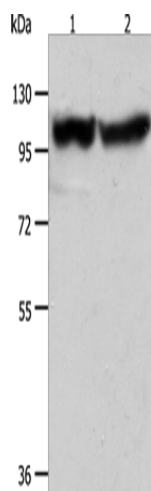
| | |
|-------------------------|--|
| Product Type: | Primary Antibodies |
| Applications: | WB |
| Recommended Dilution: | WB: 500-2000 WB positive control: Human fetal muscle tissue and hela cells |
| Reactivity: | Human, Mouse |
| Host: | Rabbit |
| Isotype: | IgG |
| Clonality: | Polyclonal |
| Immunogen: | Fusion protein corresponding to a region derived from 3-261 amino acids of human actinin, alpha 3 |
| Formulation: | PBS pH7.3, 0.05% NaN ₃ , 50% glycerol |
| Concentration: | lot specific |
| Purification: | Antigen affinity purification |
| Conjugation: | Unconjugated |
| Storage: | Store at -20°C as received. |
| Stability: | Stable for 12 months from date of receipt. |
| Predicted Protein Size: | 103 kDa |
| Gene Name: | actinin alpha 3 (gene/pseudogene) |
| Database Link: | NP_001095 Entrez Gene 11474 Mouse Entrez Gene 89 Human Q08043 |
| Background: | This gene encodes a member of the alpha-actin binding protein gene family. The encoded protein is primarily expressed in skeletal muscle and functions as a structural component of sarcomeric Z line. This protein is involved in crosslinking actin containing thin filaments. An allelic polymorphism in this gene results in both coding and non-coding variants. The reference genome contains the non-coding allele. The non-functional allele of this gene is associated with elite athlete status. |
| Synonyms: | MGC117002; MGC117005 |



[View online »](#)

Protein Pathways:

Adherens junction, Arrhythmogenic right ventricular cardiomyopathy (ARVC), Focal adhesion, Leukocyte transendothelial migration, Regulation of actin cytoskeleton, Systemic lupus erythematosus, Tight junction

Product images:

Gel: 10%SDS-PAGE

Lysate: 40 µg

Lane 1-2: Human fetal muscle tissue
hela cells

Primary antibody: TA323240 (ACTN3 Antibody) at
dilution 1/400

Secondary antibody: Goat anti rabbit IgG at
1/8000 dilution

Exposure time: 5 seconds