

## Product datasheet for **TA323238**

### DTX2 Rabbit Polyclonal Antibody

#### Product data:

Product Type:	Primary Antibodies
Applications:	IHC
Recommended Dilution:	IHC: 50-100 Positive control: Human brain Predicted cell location: Cytoplasm and Nucleus
Reactivity:	Human, Mouse
Host:	Rabbit
Isotype:	IgG
Clonality:	Polyclonal
Immunogen:	Fusion protein corresponding to C terminal 300 amino acids of human deltex homolog 2 (Drosophila)
Formulation:	PBS pH7.3, 0.05% NaN <sub>3</sub> , 50% glycerol
Concentration:	lot specific
Purification:	Antigen affinity purification
Conjugation:	Unconjugated
Storage:	Store at -20°C as received.
Stability:	Stable for 12 months from date of receipt.
Gene Name:	deltex 2, E3 ubiquitin ligase
Database Link:	<a href="#">NP_065943</a> <a href="#">Entrez Gene 74198 Mouse</a> <a href="#">Entrez Gene 113878 Human</a> <a href="#">Q86UW9</a>
Background:	DTX2 functions as an E3 ubiquitin ligase. Regulator of Notch signaling; a signaling pathway involved in cell-cell communications that regulates a broad spectrum of cell-fate determinations. Probably acts both as a positive and negative regulator of Notch; depending on the developmental and cell context. Mediates the antineural activity of Notch; possibly by inhibiting the transcriptional activation mediated by MATCH1. Functions as an ubiquitin ligase protein in vitro; suggesting that it may regulate the Notch pathway via some ubiquitin ligase activity.



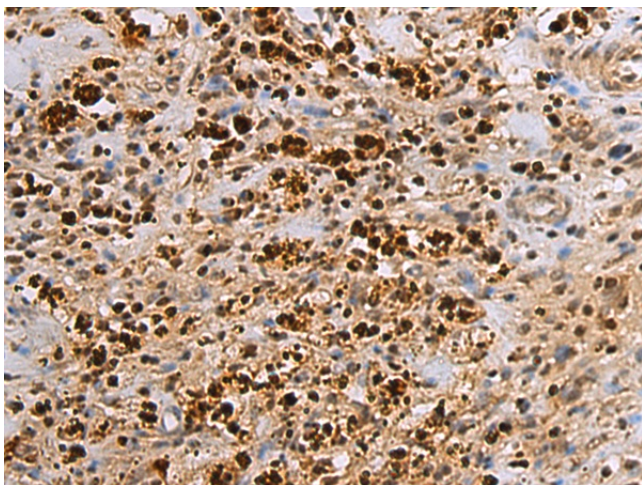
[View online »](#)

Synonyms: RNF58

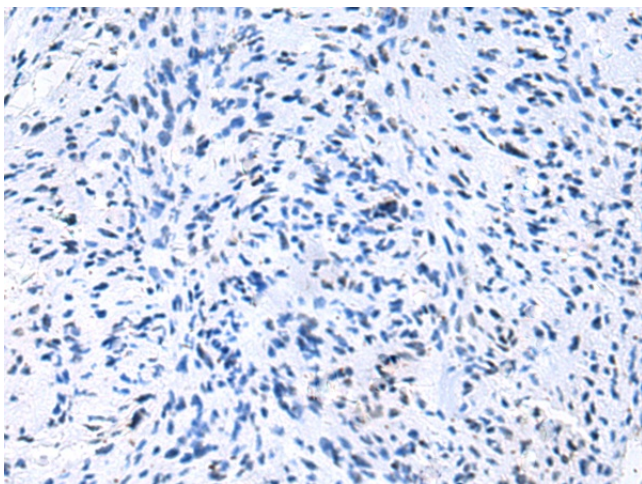
Protein Families: Druggable Genome

Protein Pathways: Notch signaling pathway

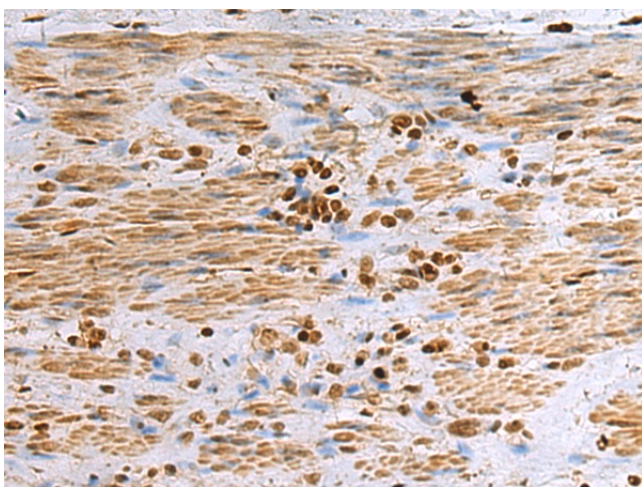
### Product images:



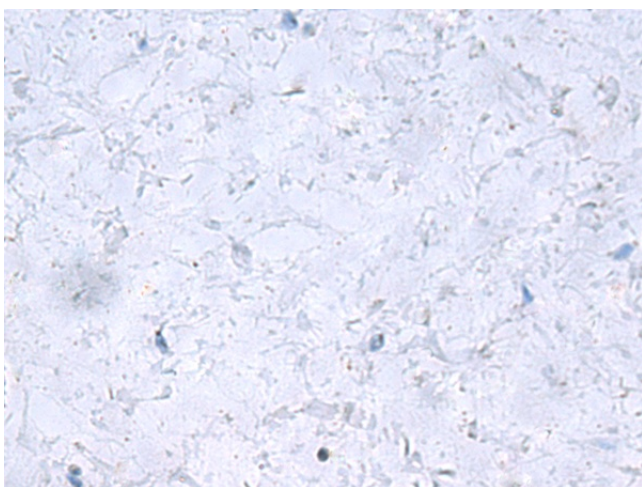
Immunohistochemistry of paraffin-embedded Human brain tissue using TA323238 (DTX2 Antibody) at dilution 1/35 (Original magnification: ×200)



Immunohistochemistry of paraffin-embedded Human brain tissue using TA323238 (DTX2 Antibody) at dilution 1/35, treated with fusion protein. (Original magnification: ×200)



Immunohistochemistry of paraffin-embedded Human gastric cancer tissue using TA323238 (DTX2 Antibody) at dilution 1/35 (Original magnification:  $\times 200$ )



Immunohistochemistry of paraffin-embedded Human gastric cancer tissue using TA323238 (DTX2 Antibody) at dilution 1/35, treated with fusion protein. (Original magnification:  $\times 200$ )