

Product datasheet for **TA323231**

ADAM10 Rabbit Polyclonal Antibody

Product data:

Product Type:	Primary Antibodies
Applications:	IHC
Recommended Dilution:	IHC: 25-100 Positive control: Human cervical cancer Predicted cell location: Cytoplasm
Reactivity:	Human, Mouse, Rat
Host:	Rabbit
Isotype:	IgG
Clonality:	Polyclonal
Immunogen:	Fusion protein corresponding to C terminal 209 amino acids of human ADAM metallopeptidase domain 10
Formulation:	PBS pH7.3, 0.05% NaN ₃ , 50% glycerol
Concentration:	lot specific
Purification:	Antigen affinity purification
Conjugation:	Unconjugated
Storage:	Store at -20°C as received.
Stability:	Stable for 12 months from date of receipt.
Gene Name:	ADAM metallopeptidase domain 10
Database Link:	NP_001101 Entrez Gene 11487 Mouse Entrez Gene 29650 Rat Entrez Gene 102 Human O14672
Background:	This gene encodes and ADAM family member that cleaves many proteins including TNF-alpha and E-cadherin. Members of the ADAM family are cell surface proteins with a unique structure possessing both potential adhesion and protease domains. Sheddase, a generic name for the ADAM metallopeptidase, functions primarily to cleave membrane proteins at the cellular surface. Once cleaved, the sheddases release soluble ectodomains with an altered location and function.
Synonyms:	AD10; AD18; CD156c; HsT18717; kuz; MADM; RAK

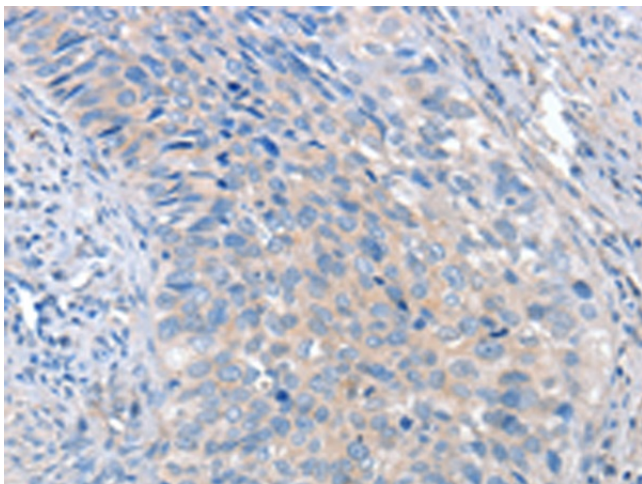


[View online »](#)

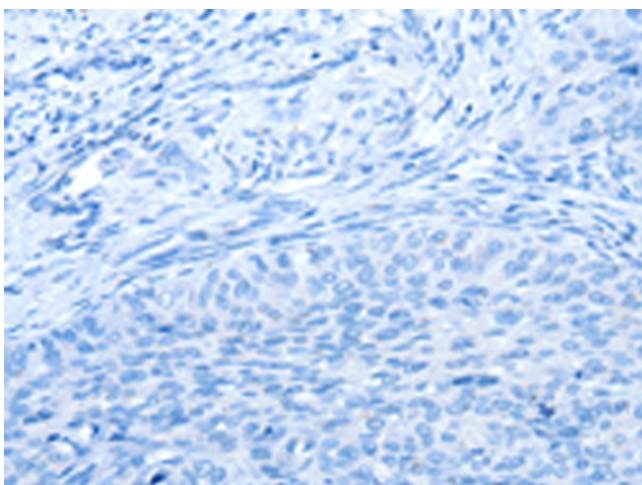
Protein Families: Druggable Genome, Protease, Transmembrane

Protein Pathways: Alzheimer's disease, Epithelial cell signaling in Helicobacter pylori infection

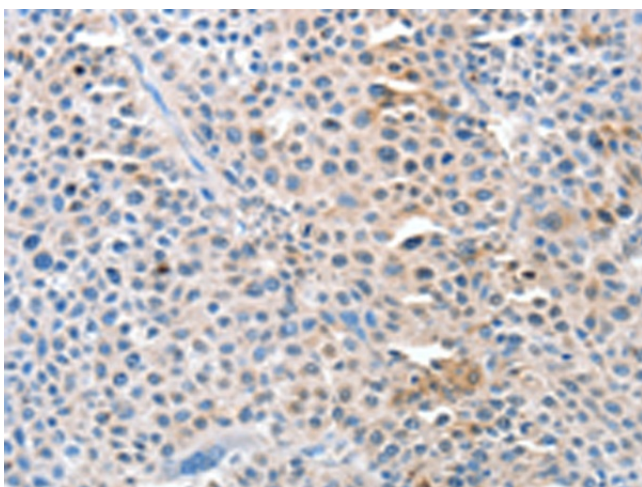
Product images:



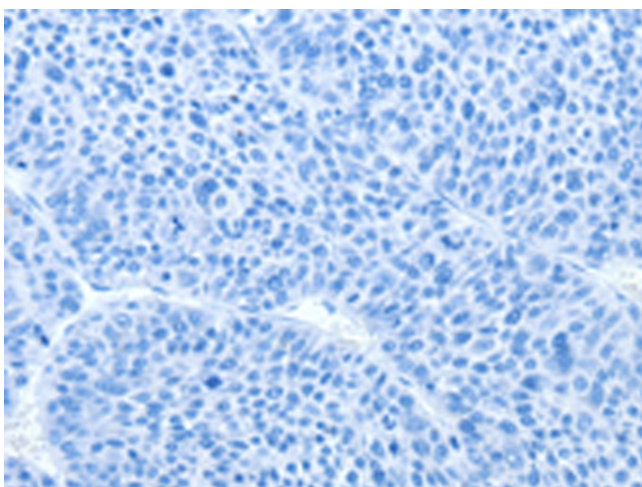
Immunohistochemistry of paraffin-embedded Human cervical cancer tissue using TA323231 (ADAM10 Antibody) at dilution 1/35 (Original magnification: ×200)



Immunohistochemistry of paraffin-embedded Human cervical cancer tissue using TA323231 (ADAM10 Antibody) at dilution 1/35, treated with fusion protein. (Original magnification: ×200)



Immunohistochemistry of paraffin-embedded Human liver cancer tissue using TA323231 (ADAM10 Antibody) at dilution 1/35 (Original magnification: $\times 200$)



Immunohistochemistry of paraffin-embedded Human liver cancer tissue using TA323231 (ADAM10 Antibody) at dilution 1/35, treated with fusion protein. (Original magnification: $\times 200$)